



**Price**  
**£315,000**

**Freehold**

3x  1x  1x 

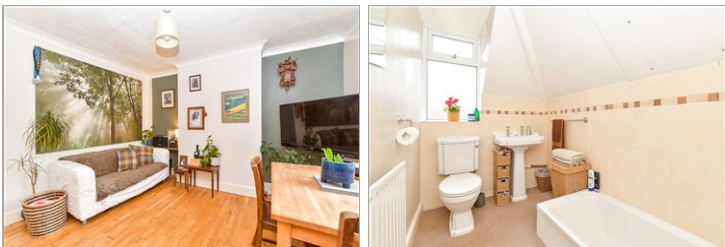
**Gladys Avenue,  
Cowplain, Waterlooville,  
Hampshire, PO8**

**OVER 60?**

Secure this property  
for up to **59% less!**

**cubitt&west**  
Helping you move forwards





## Main features

- Requested Lovedean location
- Flexible living accommodation
- Features dating back to the 1920's
- Sunny aspect rear garden
- Offered with no forward chain

## Accommodation

### GROUND FLOOR

Entrance Hall

Dining Area: 11'9 x 11'0 (3.58m x 3.36m)

Kitchen: 8'7 x 8'2 (2.62m x 2.49m)

Lounge: 13'8 x 11'0 (4.17m x 3.36m)

Sun Room: 8'7 x 6'2 (2.62m x 1.88m)

Bedroom 3: 8'3 x 6'4 (2.52m x 1.93m)

### FIRST FLOOR

Landing

Bedroom 1: 12'7 x 10'9 (3.84m x 3.28m)

Bedroom 2: 12'0 x 9'0 (3.66m x 2.75m)

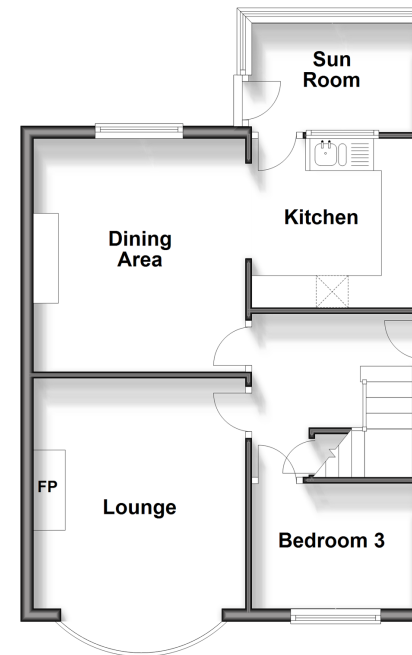
Bathroom

### OUTSIDE

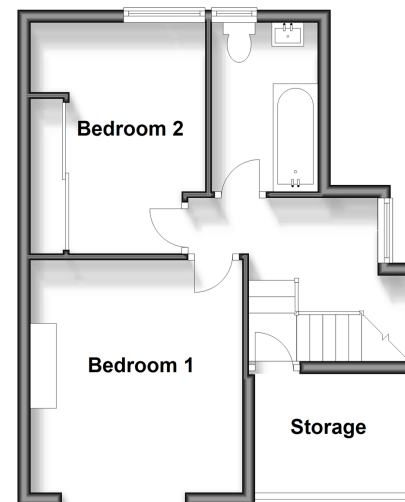
Rear Garden

Off Road Parking

**Ground Floor**  
Approx. 48.6 sq. metres (523.1 sq. feet)



**First Floor**  
Approx. 33.9 sq. metres (364.4 sq. feet)



**Call Waterloo - 02392 267244 ■ [cubittandwest.co.uk](http://cubittandwest.co.uk)**

- Legal advice should be taken to verify fixtures/fittings, planning, alterations and/or lease details
- Appliances & services are untested, dimensions are approximate and floor plans are not to scale
- Through a Homewise Home For Life Plan people aged 60+ can secure this property for up to 59% less, by purchasing a Lifetime Lease



42410676/20260114/EH/EC