



Poynders Gardens, SW4

£2,900 Per calendar month

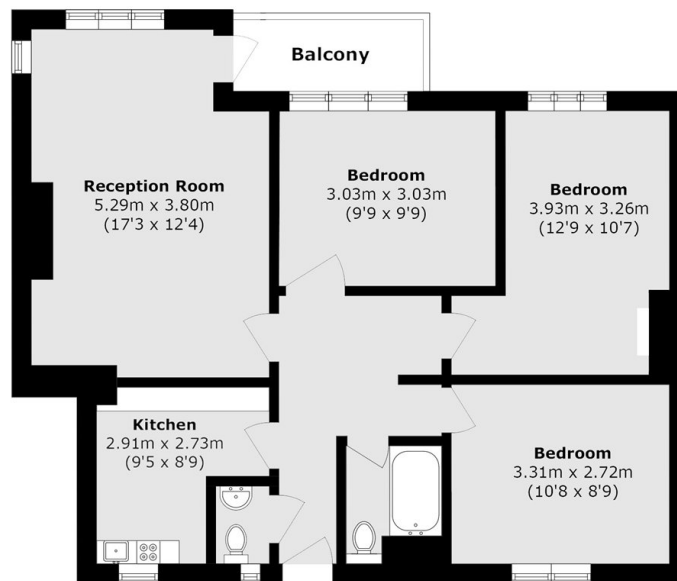
This top floor apartment is presented in excellent condition throughout and expertly balances living with entertaining space, boasting great light and proportions in all rooms. Positioned in a secure block, it comprises a large reception room with access to a private west facing balcony with sunset views, a separate kitchen, three double bedrooms and a bathroom with separate W/C.

Situated moments from the popular Abbeville Village with its many local shops, restaurants and cafés. Clapham Common and Clapham South stations are just a stroll away.

Features

- Large Reception Room
- Separate Kitchen
- Top Floor Flat
- Three Bedrooms
- Private Balcony
- Excellent Location

Poynders Gardens, London, SW4



Total area (approx.): 65.6 sq. m (706.1 sq. ft)

Balcony area (approx.): 3.15 sq. m (33.9 sq. ft)