



lettingInternational



11A Redbridge Lane East

, Ilford, IG4 5ET

£1,750 Per Month





## Viewing

Please contact our Letting International LTD Office on 02085549999 if you wish to arrange a viewing appointment for this property or require further information.

This well-presented two-bedroom first floor flat on Redbridge Lane East, IG4 5ET offers generous living space and a bright, modern finish throughout.

The property comprises two good-sized bedrooms, both benefiting from ample storage, a particularly spacious living room, and a large kitchen/diner ideal for everyday living and entertaining. Recently redecorated with fresh paint and new carpets, the flat enjoys plenty of natural light, creating a comfortable and inviting atmosphere throughout. The property is offered unfurnished, with the kitchen equipped with a fridge freezer, washing machine, and gas oven with cooker and hob.

Conveniently located within easy reach of Redbridge Station, the property is served by the Central Line, providing direct access into Stratford, Liverpool Street, and Central London. A number of local bus routes are also available, offering further connectivity to surrounding areas.

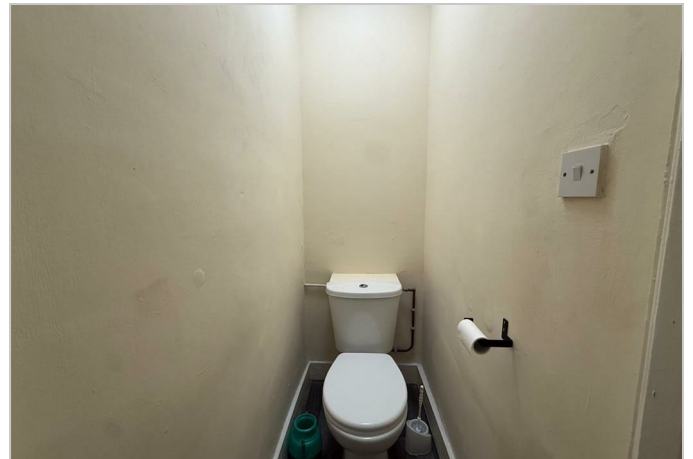
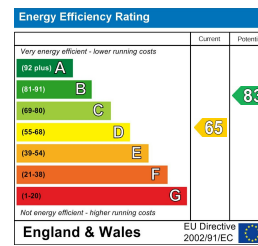
The property is well positioned for a variety of local amenities, including supermarkets, independent shops, cafés, and restaurants. Ilford town centre is also a short distance away, offering a wider selection of retail outlets, leisure facilities, and dining options. Nearby green spaces such as Valentines Park provide an excellent setting for outdoor activities and relaxation.

This property represents a great opportunity for tenants seeking space, convenience, and a well-connected

## Area Map



## Energy Efficiency Graph



These particulars, whilst believed to be accurate are set out as a general outline only for guidance and do not constitute any part of an offer or contract. Intending purchasers should not rely on them as statements of representation of fact, but must satisfy themselves by inspection or otherwise as to their accuracy. No person in this firm's employment has the authority to make or give any representation or warranty in respect of the property.

332 - 336 Perth Road, Ilford, Essex, IG2 6FF  
 Tel: 02085549999 Email: sales@lintgroup.com www.lintgroup.com