



Prairie Street
London, SW8

CHESTERTONS





A very well presented two-bedroom period garden flat located within the popular Diamond conservation area.

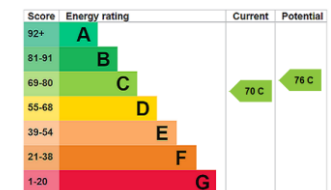
Benefitting from its own private entrance, the accommodation comprises of 730 sq ft of living and entertaining space. The open plan living rooms is a bright and airy with, multiple windows and glazed double doors leading onto the private garden. The kitchen offers this contemporary property a modern feel with sleek units, built in appliances and generous worktop space. Just down the hall you will find the second double bedroom, the family bathroom and the large master bedroom complete with bay window and built in wardrobes. The property is completed with a good-sized basement that is currently utilised for storage.

Prairie Street is located within a short distance (0.4 miles) to Queenstown Road/Battersea Park mainline station with links to Waterloo and Victoria. Alternatively, Battersea Power station underground is just 0.9 miles distance. Excellent bus routes into central London are also nearby.

The vast green spaces of Battersea Park are close at hand as well as Battersea Power station and all its commercial offerings.

- Dimond conservation area
- Two bedroom
- Private garden
- Basement
- On street parking

Asking Price £525,000

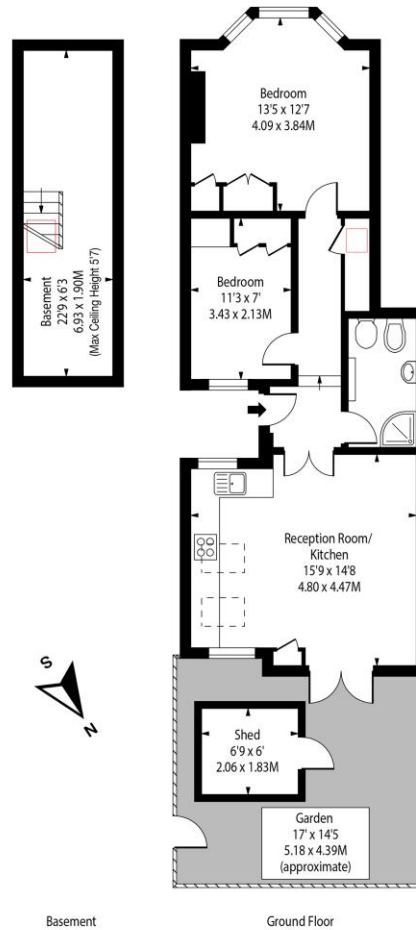


Tenure: Share of Freehold 174 years 1 months
Service Charge: N/A
Ground Rent: N/A
Local Authority: London Borough of Wandsworth
Council Tax Band: D

Chestertons Battersea Park & Nine Elms Sales

62-64 Battersea Bridge Road
 London
 SW11 3AG
 batterseapark@chestertons.co.uk
 0203 040 8700
 chestertons.co.uk

Prairie Street, SW8



Approx Gross Internal Area 730 Sq Ft - 67.82 Sq M

Includes Basement (Max Ceiling Height 5'7") - 142 Sq Ft
Excludes Shed

Drawn in Accordance with IPMS 3B: Residential
Illustration For Identification Purposes Only - Not to Scale
www.homespacestudio.co.uk - Ref. No. 53581



Chesterton UK Services Limited trading as Chestertons for themselves and for the vendor of this property whose agents they are, give notice that (i) these particulars do not constitute any part of an offer or contract, (ii) all statements contained within these particulars are made without responsibility on the part of Chestertons or the vendor, (iii) whilst made in good faith, none of the statements contained within these particulars are to be relied upon as a statement or representation of fact, (iv) any intending purchasers must satisfy themselves by inspection or otherwise as to the correctness of each of the statements contained within these particulars, (v) the vendor does not make or give either Chestertons or any person in their employment any authority to make or give representation or warranty whatsoever in relation to this property. Wide angle lenses may be used. ©Copyright Chestertons | Chesterton UK Services Limited | Registered Office 5th Floor, The Lantern, 75 Hampstead Road, London, NW1 2PL Registered Company Number 05334580.



This paper is
100% recyclable