



## Kingsway North, , York, YO30 6JH

- Four Bedroom Semi-Detached Home
- Driveway Parking
- Brick Built Store
- Extended Rear Living Room
- Enclosed Rear Garden
- Council Tax Band B

**£260,000**



# Kingsway North, , York, YO30 6JH

## DESCRIPTION

Hunters are delighted to offer this spacious four-bedroom semi-detached home with driveway parking and a generous rear garden, located in a popular residential area to the north of York. Offering well-balanced living accommodation, an extended rear living room and a useful brick-built shed, this property is ideal for growing families seeking excellent access to local amenities, schools and transport links.

The ground floor includes an entrance hall, a bay-fronted dining room, a fitted kitchen with a range of wall and base units, a ground-floor WC, and an impressive extended living room with French doors opening onto the garden — creating a superb family and entertaining space.

To the first floor are four well-proportioned bedrooms and a family bathroom fitted with a three-piece suite. Externally, the property benefits from off-street parking to the front and an enclosed rear garden laid mainly to lawn, with a patio seating area and a brick-built shed providing excellent additional storage.

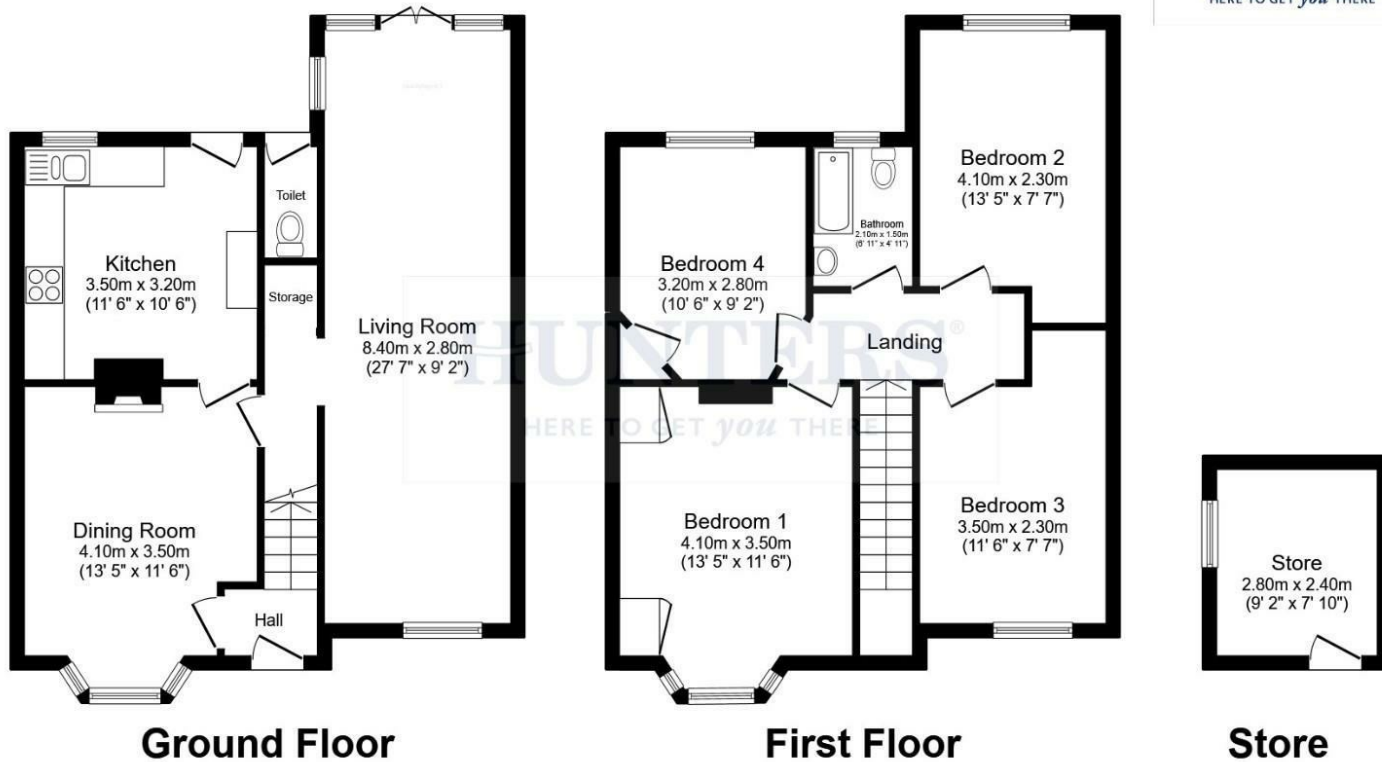
The accommodation briefly comprises an entrance hall, bay-fronted dining room, fitted kitchen with a range of wall and base units, useful ground floor WC and an impressive extended living room to the rear with French doors opening onto the garden, creating an excellent entertaining and family space.

To the first floor are four well proportioned bedrooms and a family bathroom fitted with a three piece suite. Externally, the property benefits from off street parking to the front and an enclosed rear garden laid mainly to lawn with patio seating area and a brick built shed providing excellent additional storage space.

Kingsway North offers convenient access to local shops, schools, Clifton Moor retail park, York city centre and the outer ring road, making it a highly practical location for families and commuters.







Total floor area 126.8 m<sup>2</sup> (1,365 sq.ft.) approx

This floor plan is for illustrative purposes only. It is not drawn to scale. Any measurements, floor areas (including any total floor area), openings and orientation are approximate. No details are guaranteed, they cannot be relied upon for any purpose and they do not form part of any agreement. No liability is taken for any error, omission or misstatement. A party must rely upon its own inspection(s). Powered by propertybox.io

### Viewings

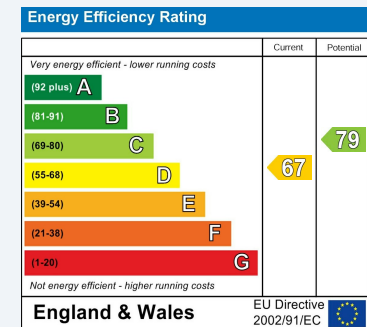
Please contact [york@hunters.com](mailto:york@hunters.com), if you wish to arrange a viewing appointment for this property or require further information.

### Valuations

For a valuation of your property, please email the team with your property details, contact information and the times you are available.

## ENERGY PERFORMANCE CERTIFICATE

The energy efficiency rating is a measure of the overall efficacy of a home. The higher the rating the more energy efficient the home is and the lower the fuel bills will be.



These particulars are intended to give a fair and reliable description of the property but no responsibility for any inaccuracy or error can be accepted and do not constitute an offer or contract. We have not tested any services or appliances (including central heating if fitted) referred to in these particulars and the purchasers are advised to satisfy themselves as to the working order and condition. If a property is unoccupied at any time there may be reconnection charges for any switched off/disconnected or drained services or appliances - All measurements are approximate.

**THINKING OF SELLING?** If you are thinking of selling your home or just curious to discover the value of your property, Hunters would be pleased to provide free, no obligation sales and marketing advice. Even if your home is outside the area covered by our local offices we can arrange a Market Appraisal through our national network of Hunters estate agents.