



## Winslow Road, W6

£1,400,000

This four bedroom, three bathroom family home has been fully extended and renovated by the current owners and measures at over 1660sq ft, situated on a popular road in the Crabtree Conservation Area moments from the River Thames and a short walk from Hammersmith Station.

Winslow Road is located within a few minutes walk to the River Thames and is close proximity to the many amenities of Fulham Palace Road and Hammersmith Broadway, Hammersmith Underground Station is also just a short distance away, offering excellent transport links across London.

### Features

- Four Bedrooms
- Three Bathrooms
- Fully Renovated & Extended
- Over 1600sq ft
- Downstairs Toilet
- Chain Free



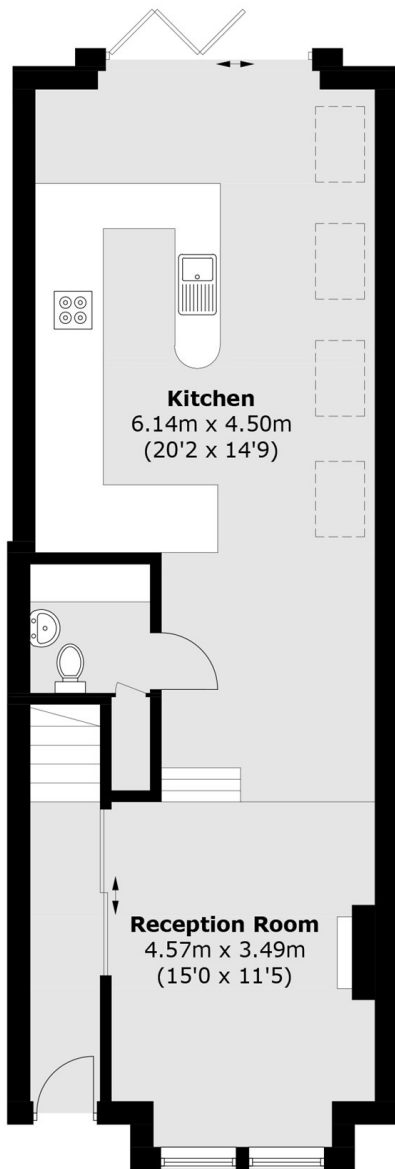
## Winslow Road, W6

Comprising of a raised reception room to the front and a step down sprawling kitchen diner and breakfast bar, built in Miele appliances, bi-folding doors out to the patio garden, this floor further benefits from a large under-stairs room which doubles up as the downstairs toilet and utility room alongside integrated Sonos speakers and Marble underfloor heating, on the first floor you have a large double bedroom with built in wardrobes, large three piece bathroom with jacuzzi bath as well as the master bedroom which benefits from floor to ceiling built in wardrobes a walk in wardrobe and en-suite.

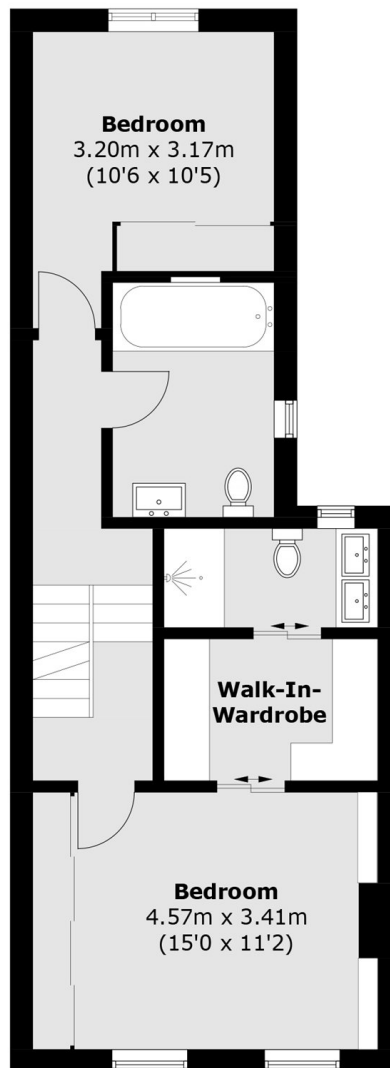
On the second floor you have two further large double bedrooms both with Juliet balconies and the largest of the two having built in storage as well as an en-suite.



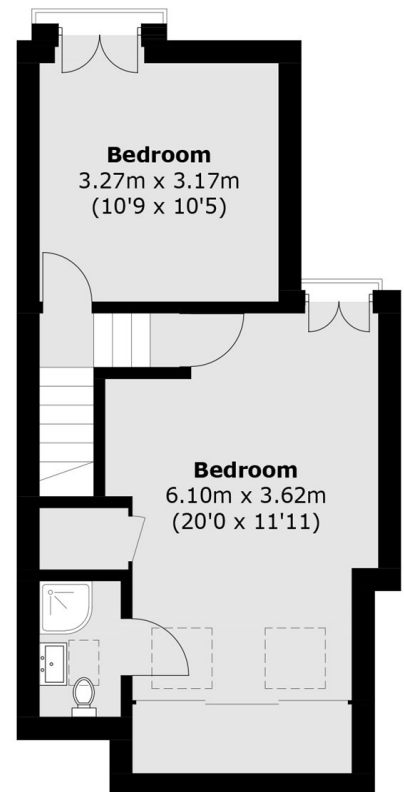
# Winslow Road, London, W6



**Ground Floor**



**First Floor**



**Second Floor**

Total area (approx.): 152.7 sq. m (1,643.6 sq. ft)