



Guide Price
£350,000

**Share of
Freehold**

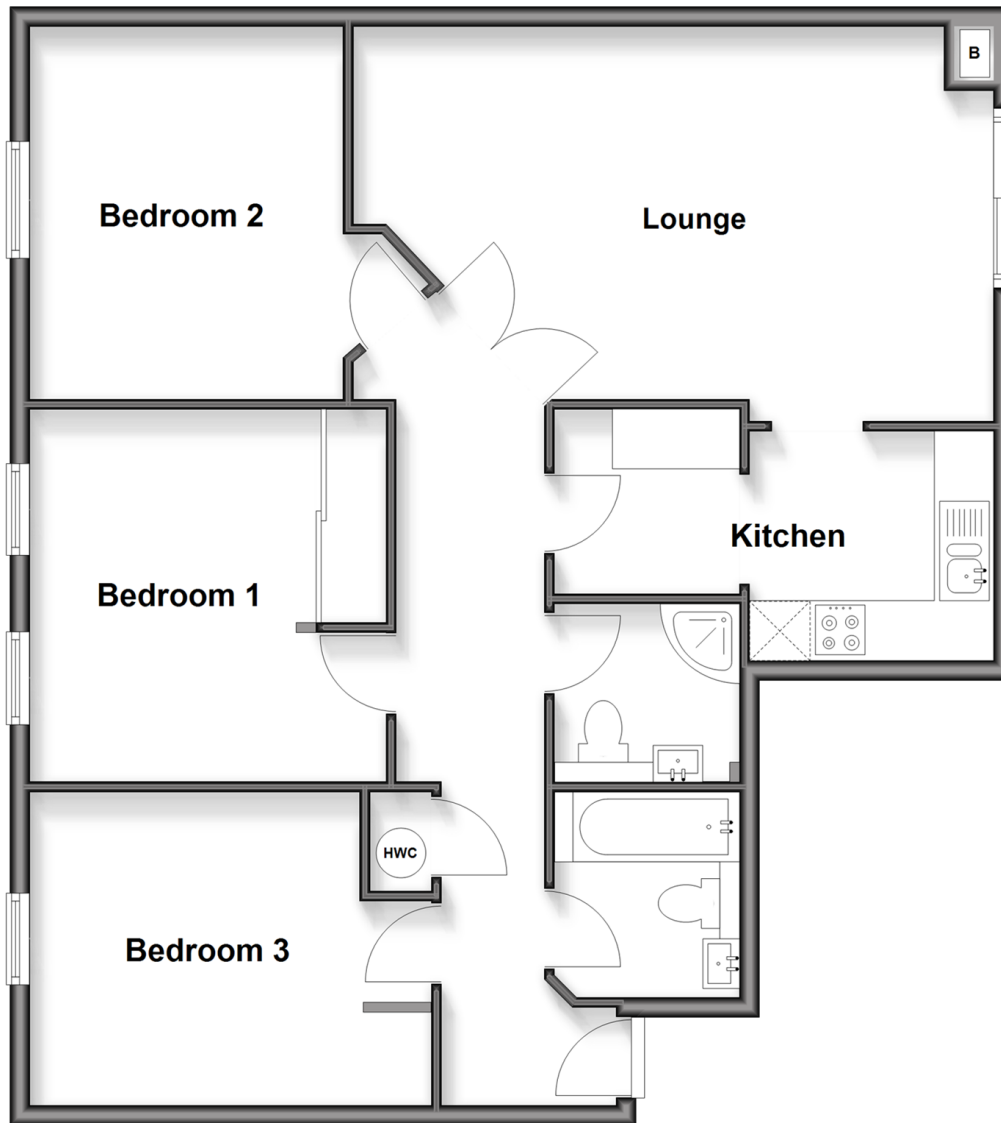
3x  2x  1x 

**French Apartments,
Lansdowne Road,
Purley, Surrey, CR8**

cubitt & west
Helping you move forwards

First Floor

Approx. 92.7 sq. metres (997.3 sq. feet)



Accommodation

FIRST FLOOR

Entrance Hall

Lounge: 21'9 x 13'0 (6.63m x 3.97m)

Kitchen: 14'7 x 7'8 (4.45m x 2.34m)

Bedroom 1: 12'2 x 11'3 up to fitted wardrobes (3.71m x 3.43m)

Bedroom 2: 12'2 x 10'10 (3.71m x 3.30m)

Bedroom 3: 13'3 x 10'3 (4.04m x 3.13m)

Bathroom

Shower Room

OUTSIDE

Allocated Parking Space

Communal Gardens

Resident's Gym



Main features

- **CHAIN FREE -Large first floor apartment in central Purley location**
- **Private gated development with concierge service**
- **Beautiful communal grounds with feature fountain and stream**
- **Allocated parking & resident's gym**
- **Walking distance to Purley station, Tesco, cafes & restaurants**



Nearest Schools

Primary Schools: Margaret Roper Catholic Primary 0.6 miles, Beaumont Primary 0.6 miles, Christ Church CoFE Primary (Purley) 0.7 miles Secondary Schools: Thomas More Catholic School 0.6 miles, Tudor Lodge School 0.7 miles, Lodge School 0.8 miles



Transport Information

Train Stations: Purley 0.2 miles, Reedham 0.4 miles, Riddlesdown 0.9 miles



Address

French Apartments, Lansdowne Road, Purley, Surrey, CR8



Directions

For directions to this property please contact us.



cubitt&west
Helping you move forwards

Call Purley Branch 020 8660 8882 ■ cubittandwest.co.uk



■ Legal advice should be taken to verify fixtures/fittings, planning, alterations and/or lease details ■ Appliances & services are untested, dimensions are approximate and floor plans are not to scale



21511916/20260314/D1/KV