

1
BED

One Bedroom First Floor Flat Close To Town

40a, South Road, Newhaven, BN9 9QJ

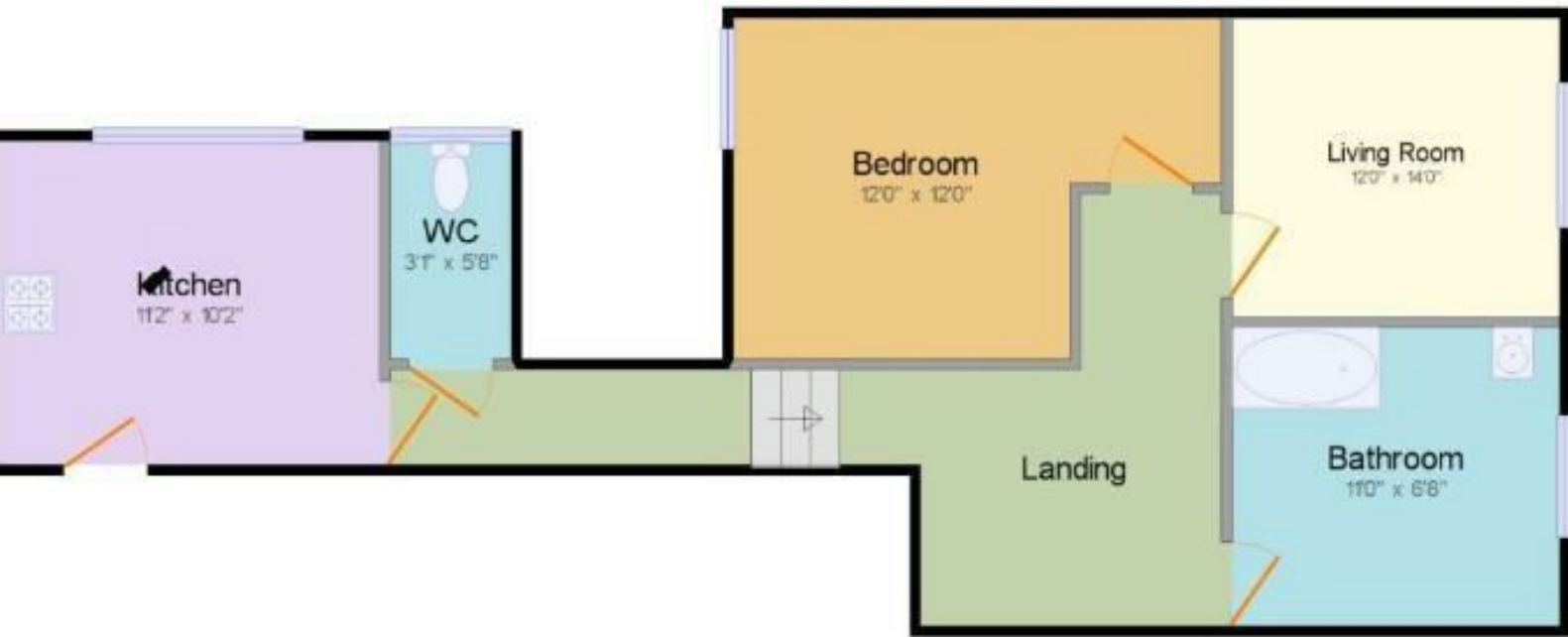


Offers Around £145,000

Share of Freehold

phillipmann
we do more

www.phillipmann.com



inbrief...

Phillip Mann estate agents are pleased to offer for sale this first floor one bedroom flat located in this Victorian building. The property offers good size accommodation and a viewing come highly recommended.

A communal entrance door is access via a external staircase which leads to the the communal entrance hall. Here there is a private entrance door to the flat.

The kitchen is a good size room which has been refitted with a range of wall and base units which includes a selection of cupboards and drawers. There is a built in sink unit which is set into worksurface and there is appliance space to include cooker, washing machine and fridge/freezer. The room is compete with a wall mounted boiler, part tiled walls and a window overlooks the side towards Newhaven Harbour. From here, there is a an inner hallway which has a storage cupboard and doors which lead to the remainder of the accommodation. The lounge is a generous size room which has a bay window and overlooks the front. There is a good size double bedroom which has a range of built in wardrobes and a window overlooking the rear. There is a refitted bathroom which has a paneled bath with shower over and wash hand basin. The room is complete with tiled walls with a window to the front. Completing the property is a separate WC.

*** The property is being sold with a new 999 year lease, share of the freehold, NO GROUND RENT and low maintenance charges ***



Energy Rating C

Council Tax Band A

moreinfo...



Phillip Mann Newhaven Office
16 Bridge Street, Newhaven, BN9 9PJ
01273 517517

To see more details on this & all our homes go to
www.phillipmann.com