

Aldreds
Estate Agents

37 Payne Street

Lowestoft, NR33 0EZ

Offers In Excess Of £135,000



3



2



2



C

37 Payne Street

Lowestoft, NR33 0EZ

***** LARGE FAMILY HOME ***** Aldreds are delighted to offer this spacious 3 separate bedroomed mid terraced property situated in this very desirable location within walking distance of Lowestoft beach and South Lowestoft amenities. The property offers substantial family accommodation including hallway entrance, open plan lounge/diner, breakfast room, spacious kitchen, rear lobby, ground floor bathroom and to the first floor there is a split level galleried landing, 3 separate bedrooms and a separate W.C. To the outside rear there is modern brick built garage given options for off road parking or storage. The benefits also include Upvc windows and gas fired central heating. The property does require some basic updating and redecoration. Set at a realistic asking price and an early viewing is strongly recommended.

Entrance Hall

Fitted carpet, radiator, stairs off to the first floor.

Open Plan Lounge/Diner

24'5" x 10'3" (7.46 x 3.13)

Fitted carpet, double aspect Upvc windows, feature fireplace with inset living flame electric fire, radiators, power points, T.V point, ample space for family size table and chairs.

Breakfast Room

8'11" x 8'3" (2.74 x 2.54)

Fitted carpet, Upvc window, radiator, power points.

Kitchen

11'6" x 8'3" (3.51 x 2.54)

Fitted kitchen flooring, range of fitted kitchen units, extended work surfaces, stainless steel sink, recess for white goods including plumbing for a washing machine, tiled splash backs, power points, Upvc window.

Rear Lobby

Fitted carpet, Upvc door leading out to the rear garden, full length storage cupboard.





Shower Room

Fitted bathroom flooring, shower suite comprising of a double width tiled shower cubicle, low level W.C, pedestal sink, part tiled walls, Upvc window, radiator.

First Floor

Split level galleried landing, 3 separate bedrooms leading off, fitted carpet, loft access leading to insulated loft space, full length storage cupboard.

Bedroom 1

12'4" x 13'5" (3.76 x 4.11)

Fitted carpet, Upvc window, power points, radiator.

Bedroom 2

7'11" x 11'11" (2.42 x 3.65)

Fitted carpet, radiator, power points, Upvc window.

Bedroom 3

6'7" x 8'5" (2.01 x 2.59)

Fitted carpet, radiator, power points, Upvc window.

W.C

Fitted flooring, low level W.C, Upvc window.

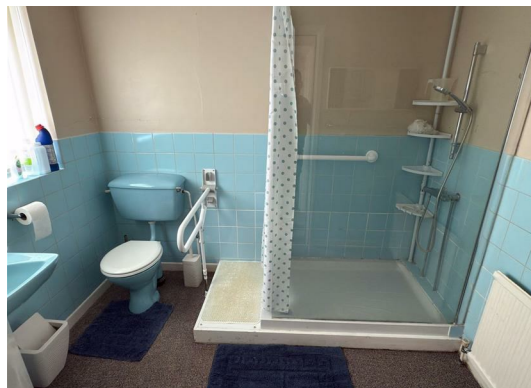
Outside

Outside To The Front

There is an enclosed front garden with footpath leading to front door.

Outside To The Rear

There is a courtyard garden with range of shrub borders, oversized brick built garage with up and over door, power points and lighting, vehicular rear access.



Floor Plan



Viewing

Please contact our Aldreds Lowestoft Office on 01502 565432 if you wish to arrange a viewing appointment for this property or require further information.

Disclaimer

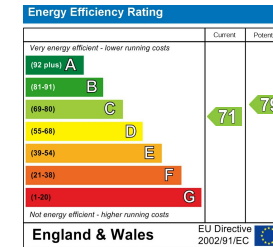
These particulars are issued on an understanding that all negotiations shall be conducted through Messrs. Aldreds. Please note: Messrs. Aldreds for themselves and for the vendors or lessors of this property whose agents they are given notice that: 1. Particulars are set out as a general outline only for guidance of intending purchasers or lessees, and do not constitute nor constitute part of, an offer or contract. 2. All descriptions, dimensions, references to condition and necessary permissions for use and occupation, and other details are given without responsibility and any intending purchasers or tenants should not rely on them as statements or representations of fact but must satisfy themselves by inspection or otherwise as to the correctness of each of them. 3. No person in the employment of Messrs. Aldreds has any authority to make or give any representation or warranty whatever in relation to this property. 4. If you are proposing to visit the property and are travelling some distance please check with Aldreds on the issue of availability prior to travelling. 5. Aldreds Property Consultants and associated services may offer additional services to the prospective purchaser for which they will be entitled to receive a commission.

Aldreds are pleased to be working with Mortgage Advice Bureau. They're an award-winning mortgage broker with over 1,400 advisers across the UK, and have access to over 12,000 mortgage products from over 90 lenders. Aldreds Estate Agents Ltd receive a commission of £200 on each completed case. Your home may be repossessed if you do not keep up repayments on your mortgage. There may be a fee for mortgage advice. The actual amount you pay will depend upon your circumstances. The fee is up to 1%, but a typical fee is 0.3% of the amount borrowed. Mortgage Advice Bureau is a trading name of Mortgage Seeker Limited which is an appointed representative of Mortgage Advice Bureau Limited and Mortgage Advice Bureau (Derby) Limited which are authorised and regulated by the Financial Conduct Authority. Mortgage Seeker Limited Registered Office: Lovewell Blake, Sixty Six North Quay, Great Yarmouth, Norfolk, NR30 1HE. Registered in England Number: 03721415. 6. Potential purchasers should check with their providers that the broadband and mobile phone coverage they would require is available.

Area Map



Energy Efficiency Graph



143 London Road North, Lowestoft, Suffolk, NR32 1NE
 Tel: 01502 565432 Email: lowestoft@aldreds.co.uk <https://www.aldreds.co.uk/>
 Registered in England Reg. No. 08945751 Registered Office: 17 Hall Quay, Great Yarmouth, Norfolk NR30 1HJ
 Directors: Mark Duffield B.S.c. FRICS. Dan Crawley MNAEA Paul Lambert MNAEA