



## Old Ford Road, E2

### £1,085,000

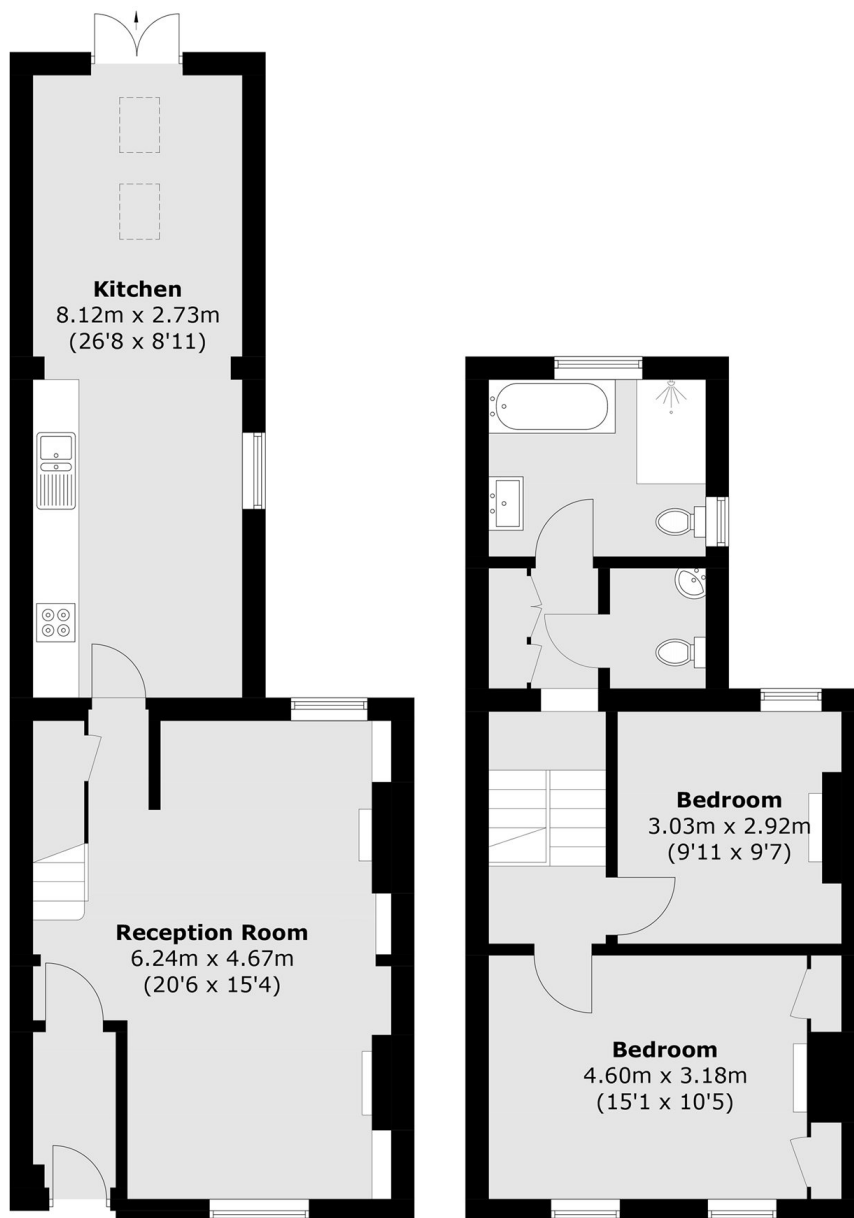
Spacious two bedroom, period freehold house on the sought after Old Ford Road. The house has a large and bright living area with ample space to dine, this area leads out to the separate, modernised kitchen with large kitchen island and allows for a further dining space, this area gives access to the large wrap around South-facing garden. The first floor has the spacious two double bedrooms with ample built in storage and the modernised family bathroom and separate WC. The entire property has generous natural light made possible by the large, feature sashed windows.

The surrounding area is a pocket of East London where industrial heritage meets a slower, village-like pace. Bordered by Victoria Park and the Regent's Canal, the neighbourhood is defined by its green spaces. To the north, the 'People's Park' offers 200 acres of parkland and a popular Sunday market. A short walk along the towpath leads to Victoria Park Village, home to local institutions like The Ginger Pig, Pophams and The Deli Downstairs. Connectivity is excellent, with Bethnal Green and Mile End stations providing direct access to the City and West End.

### Features

- Period freehold house
- Two bedrooms
- Bathroom + WC
- Separate kitchen with island
- Modern interiors
- Sought after location

# Old Ford Road, London, E2



**Ground Floor**

**First Floor**

Total area (approx.): 93.7 sq. m (1,008.6 sq. ft)