

# MORGAN H LEWIS



**Asking Price £149,950**

**Alden Close, Wigan WN1 2TS**

- \*Ground floor two bedroom apartment
- \*Spacious separate lounge
- \*Modern kitchen/dining room with ample dining space
- \*Allocated parking plus visitor parking
- \*Sought after development close to Worthington Lakes
- \*No onward chain and vacant possession

# MORGAN H LEWIS



# MORGAN H LEWIS

Positioned on this highly sought after development, close to the village of Standish and within easy reach of the rivers and Worthington Lakes, this beautifully presented ground floor two bedroom apartment is ideal for first time buyers, downsizers or anyone seeking a convenient lock up and leave home.

Offering a generous and well planned layout extending to approximately 675 sq ft, the accommodation is light and spacious throughout and forms part of a well maintained development with clean communal areas and allocated parking.

In brief, the accommodation comprises an entrance hallway leading through to a spacious and welcoming lounge, providing an excellent area for relaxing and entertaining. The separate kitchen/dining room is fitted with a range of modern neutral wall and base units complemented by wood effect worktops, together with a stainless steel electric oven and gas hob, whilst also offering ample space for dining. There are two well proportioned bedrooms, both offering comfortable accommodation and flexibility for guests, family or home working. The spacious bathroom comprises a panelled bath, separate shower cubicle, wall hung basin and WC, finished with both wall and floor tiling.

Externally, the property benefits from its own allocated parking space together with additional visitor parking, whilst the surrounding communal gardens are beautifully maintained. Within the development there is a lovely reservoir, ideal for peaceful walks and quiet moments, with the River Douglas also running through the estate.

The property offers excellent access to Standish, Wigan and Chorley, whilst being conveniently located between the M6 and M61 motorways, making it ideal for commuters. Haigh Hall and its estate are also within walking distance.

Offered with no onward chain and vacant possession, early viewings are highly recommended.

# MORGAN H LEWIS

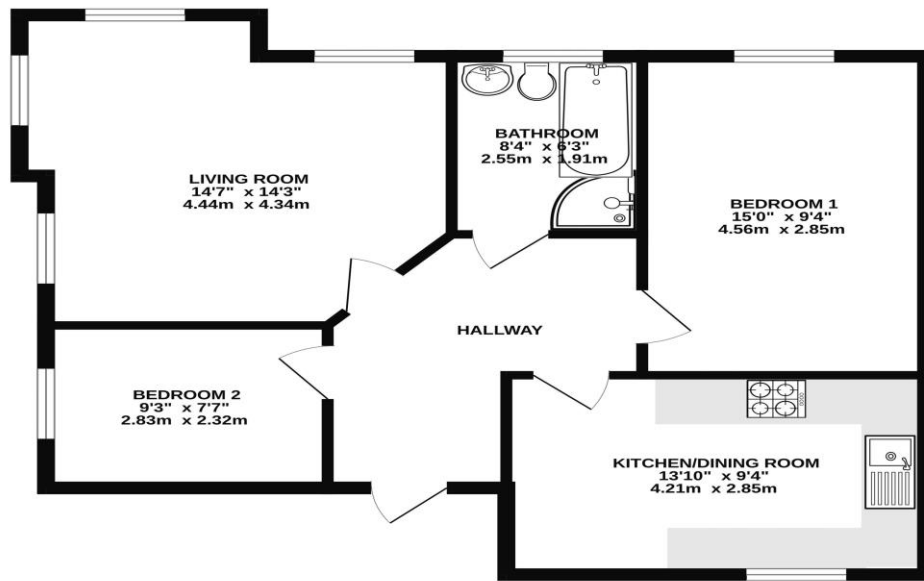


# MORGAN H LEWIS



# MORGAN H LEWIS

GROUND FLOOR  
663 sq.ft. (61.6 sq.m.) approx.



TOTAL FLOOR AREA: 663 sq.ft. (61.6 sq.m.) approx.

Whilst every attempt has been made to ensure the accuracy of the floorplan contained here, measurements of doors, windows, rooms and any other items are approximate and no responsibility is taken for any error, omission or mis-statement. This plan is for illustrative purposes only and should be used as such by any prospective purchaser. The fixtures, systems and appliances shown have not been tested and no guarantee as to their operation or efficiency can be given.  
Made with Metropix ©2026