



37 Harvesters Close

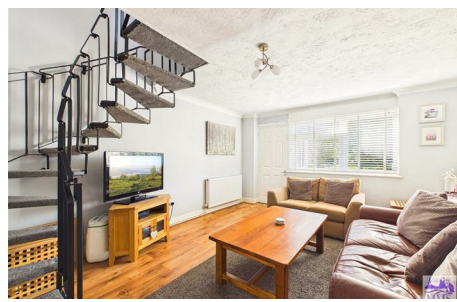
Rainham Gillingham ME8 8PB

Offers Over £295,000

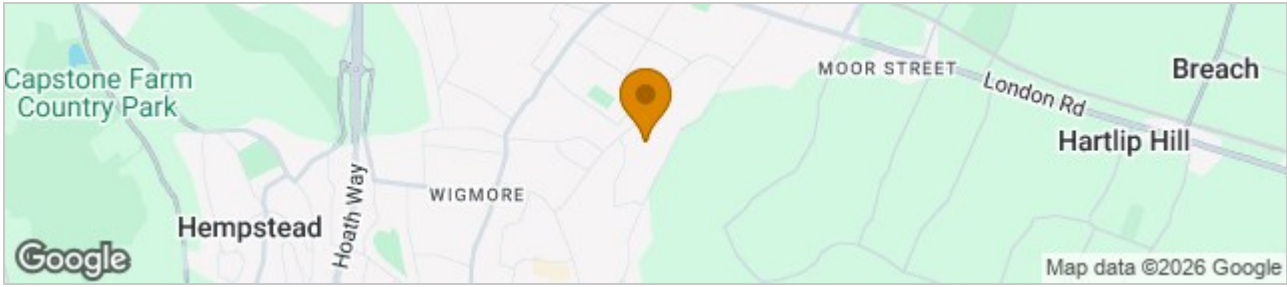


Nestled in the tranquil cul-de-sac of Harvesters Close, this charming two bedroom semi detached house in Rainham, Gillingham, presents an ideal opportunity for families and professionals alike. The property boasts a spacious driveway, accommodating up to two cars, ensuring convenience for residents and visitors. One of the standout features of this home is its proximity to local schools, making it an excellent choice for families with children. It falls within the catchment area for a reputable grammar school, providing an added advantage for educational opportunities. Additionally, the town centre and train station are within walking distance, offering easy access to a variety of shops, amenities, and transport links. For those who require swift travel options, the property is conveniently located near the motorway, facilitating quick connections to both London and Dover. This makes it an attractive option for commuters seeking a balance between suburban living and accessibility to urban centres.

Overall, this delightful house in Harvesters Close combines comfort, convenience, and a family-friendly environment, making it a perfect place to call home. EPC rating D. Council Tax Band C



Area Map



Floor Plans

Ground Floor

Floor 1

Approximate total area⁽¹⁾
620 ft²
57.5 m²

Reduced headroom
18 ft²
1.7 m²

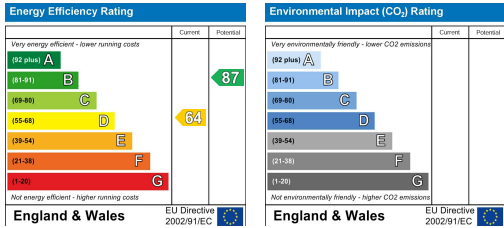
(1) Excluding balconies and terraces

Reduced headroom
----- Below 5 ft/1.5 m

Calculations reference the RICS IPMS 3C standard. Measurements are approximate and not to scale. This floor plan is intended for illustration only.

GIRAFFE360

Energy Efficiency Graph



These particulars, whilst believed to be accurate are set out as a general outline only for guidance and do not constitute any part of an offer or contract. Intending purchasers should not rely on them as statements of representation of fact, but must satisfy themselves by inspection or otherwise as to their accuracy. No appliances or fittings have been tested by MMS. No person in this firm's employment has the authority to make or give any representation or warranty in respect of the property or items contained.