



**Nether Pasture, Netherfield**  
£900 PCM





## Nether Pasture

Netherfield, Nottingham

Comfort Estates are pleased to present this tastefully decorated two-bedroom semi-detached home, ideally located on the outskirts of Netherfield.

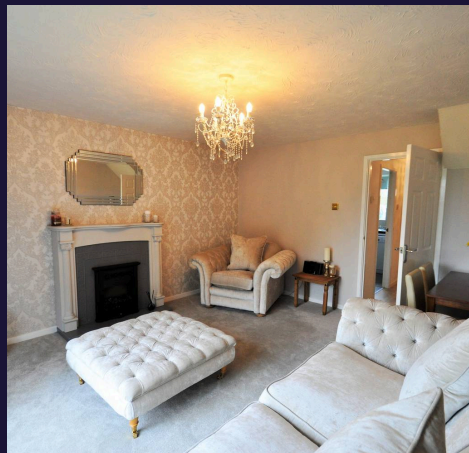
This modern property features a fully fitted kitchen complete with dishwasher, washing machine, fridge freezer, oven, and gas hob. The spacious lounge benefits from patio doors opening onto a large private garden, perfect for enjoying the warmer months.

Upstairs offers two generously sized double bedrooms, one with fitted wardrobes, along with a contemporary white three-piece bathroom suite featuring a shower over the bath.

Additional benefits include double glazing, gas central heating, and ample private off-road parking.

Ideally situated, the property is just a 15-minute drive from the City Centre, with Victoria Retail Park within easy walking distance.

Available from 23rd January 2026. This property is ideally suited to a single professional or professional couple.







### **Lounge**

The spacious lounge is tastefully decorated, featuring a stylish accent wall, neutral décor, and large patio doors providing access to the rear garden.

### **Kitchen**

This well-equipped kitchen offers a range of white wall and base units providing ample storage, generous worktop space, and includes a gas hob, oven, washing machine, dishwasher, and sink.

### **Main Bedroom**

The main bedroom is neutrally decorated and benefits from built-in mirrored wardrobes.

### **Bedroom**

A further double bedroom with large windows allowing in plenty of natural light.

### **Bathroom**

The bright bathroom features a white three-piece suite comprising a WC, wash basin, and a bath with shower over. The room is finished with white tiled walls and grey laminate-effect flooring.

### **Entrance/Hallway**

The hallway, stairs, and landing are finished to a modern standard, featuring white walls throughout, grey laminate-effect flooring, and grey carpeting to the stairs and landing.









## Comfort Estates

Comfort Estates, 47 Derby Road - NG1 5AW

0115 9338997 • [info@comfortestates.co.uk](mailto:info@comfortestates.co.uk) • [www.comfortestates.co.uk](http://www.comfortestates.co.uk)