



## Wiltshire Close, SW3

£650,000

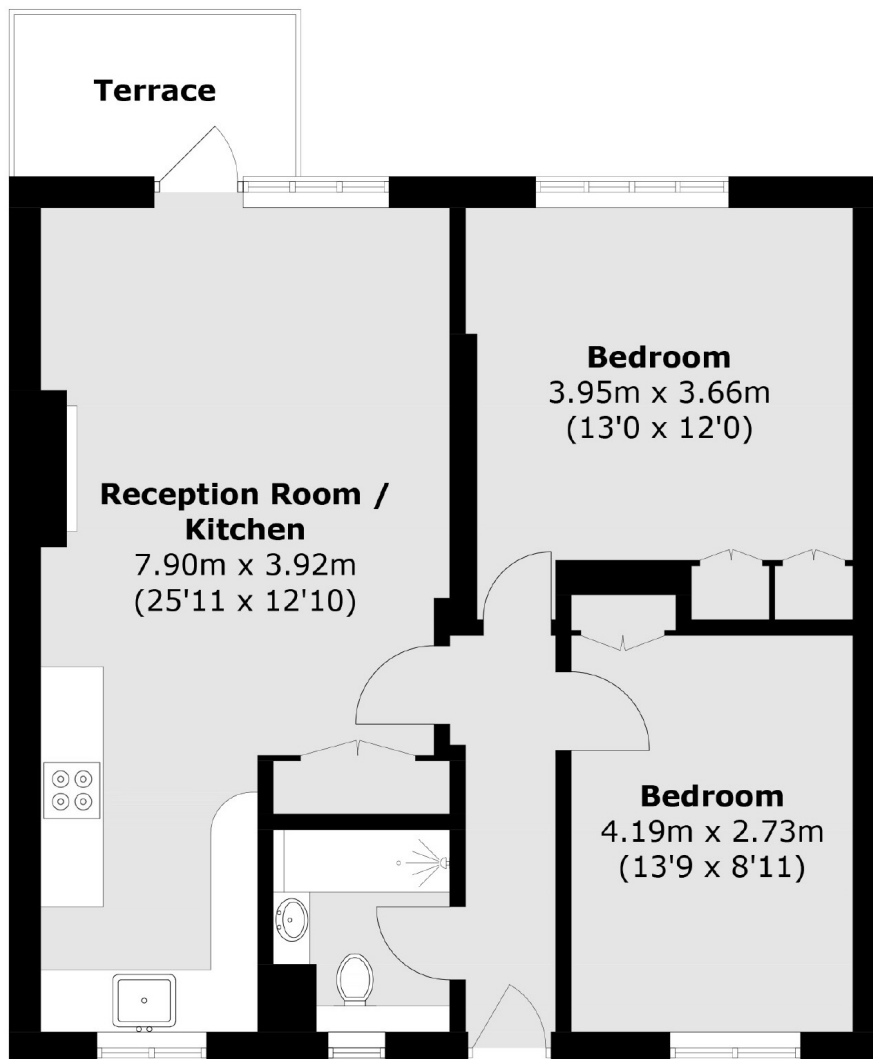
A well presented two bedroom apartment, conveniently located moments from Pavilion Road and the King's Road. Entered on the ground floor, the property benefits from a long lease and a private terrace.

Wiltshire Close is situated between Walton Street and Draycott Place. Sloane Square, Knightsbridge and South Kensington tube stations are all within walking distance.

### Features

- Long Leasehold
- Two Double Bedrooms
- Private Terrace
- Great Condition
- Quiet Location
- Low Outgoing Charges

# Wiltshire Close, London, SW3



## Ground Floor

Total area (approx.): 61.7 sq. m (664.1 sq. ft)  
Terrace: 4.2 sq. m (45.2 sq. ft)