



Beech Avenue  
Bishopthorpe, York  
YO23 2RL

£415,000



Ashtons Estate Agents are delighted to offer to the market this immaculately presented, turnkey three-bedroom end townhouse, occupying a desirable corner plot within the highly sought-after village of Bishopthorpe. Ideally positioned close to local shops, popular amenities and offering excellent access to the A64, this stylish home has been finished to an exceptional standard throughout.

The accommodation briefly comprises a welcoming entrance hall leading through to a spacious lounge/dining room, with French doors opening onto a private, low-maintenance courtyard garden. The high-quality shaker-style kitchen features a range of wall and base units, granite worktops, and integrated oven, hob and extractor fan. A convenient ground floor WC completes the accommodation on this level.

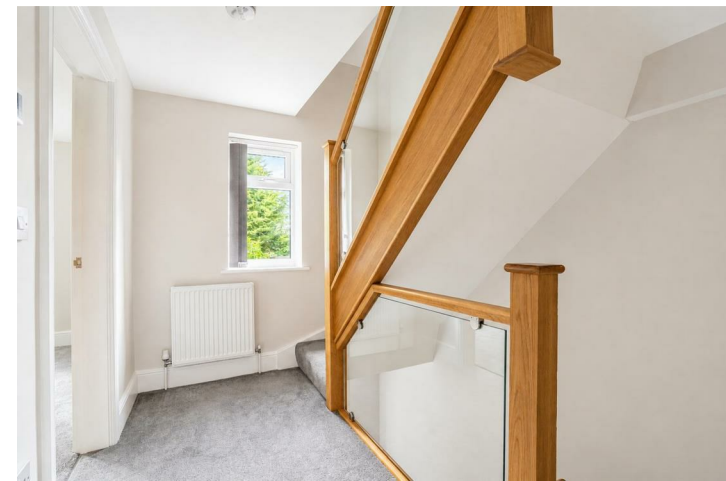
A striking glass and oak staircase leads to the first floor, where there are two generous double bedrooms and a sleek, contemporary family bathroom with a shower over the bath. Occupying the entire second floor is the impressive principal bedroom, complete with fitted Sharps wardrobes and a stylish en-suite bathroom, finished to the same exacting standard as the rest of the property.

The home also benefits from excellent built-in storage, including under-stairs storage and a substantial storage area on the second floor.

Externally, the property's corner plot position provides extensive off-street parking to the front and side, setting it apart from similar homes. To the rear, the enclosed courtyard garden offers a private and low-maintenance outdoor space, ideal for relaxing or entertaining, and benefits from a useful garden shed tucked away.

An internal viewing is highly recommended to fully appreciate the quality of finish, versatile accommodation and enviable position on offer.

\* Please note a selection of rooms have been dressed using AI for illustrative purposes.\*

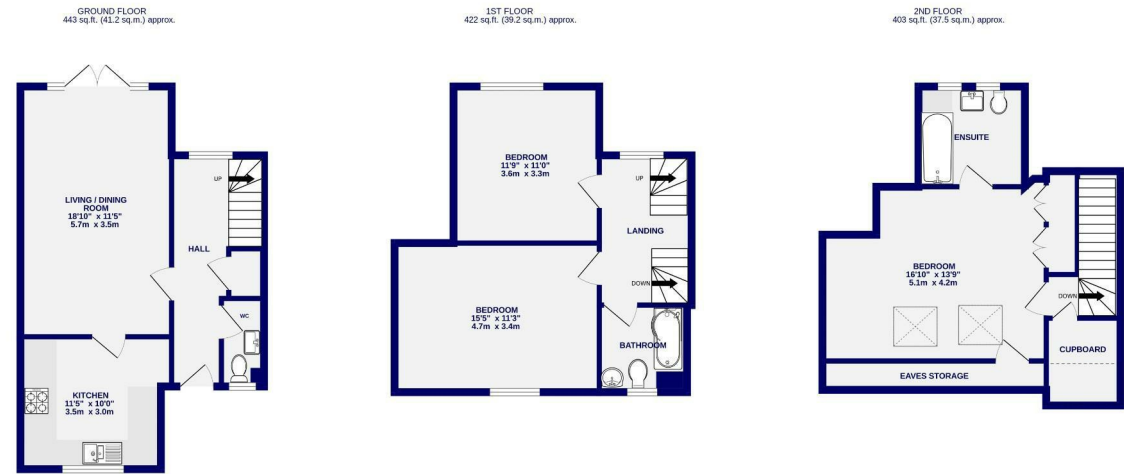




# Beech Avenue Bishopthorpe, York YO23 2RL

Freehold  
Council Tax Band - D

- Immaculately Presented End Townhouse
- Turnkey Three Bedroom Home
- Desirable Corner Plot Position
- High Quality Shaker-Style Kitchen
- Granite Worktops & Integrated Appliances
- Principal Bedroom With En-Suite
- Popular Location
- Extensive Off-Street Parking
- Private Courtyard Garden
- EPC B



TOTAL FLOOR AREA: 1268 sq.ft. (117.8 sq.m.) approx.  
Whilst every attempt has been made to ensure the accuracy of the floorplan, measurements of rooms and any other items are approximate. If included in the plan the garage/stores will form part of the overall floor area and no responsibility is taken for any error, omission or mis-statement. This plan is for illustrative purposes only and should be used as such by any prospective purchaser. The services, systems and appliances shown have not been tested and no guarantee as to their operability.  
Made with Metropix ©2020

These particulars have been prepared as accurately and as reliably as possible, but should not be relied upon as 'statement of fact'. If there is any point which is of particular importance to you, please contact the office and we would be pleased to check the information. We have not tested any services, appliances, equipment or facilities and nothing in these particulars should be deemed to be a statement that they are in good working order, or that the property is in good structural condition or otherwise. Any areas, measurements, floor plans or distances referred to are given as a guide only and are not precise. Purchasers must satisfy themselves by inspection or by otherwise regarding the items mentioned above and as to the correctness of each of the statements contained in these particulars. No person in the employment of Ashtons has any authority to make or give any representation or warranty whatsoever in relation to this property or these particulars nor enter into any contract relating to the property on behalf of the vendor. Please note that some images may have been edited with the use of AI. We are legally required to carry out AML checks for all purchasers, sellers and giftors, which become mandatory once an offer has been accepted. There is a non-refundable fee of £30 + VAT per purchaser and per giftor for these checks.