



Foxglove Cottage, Minions

Guide Price £625,000

PARKES & PEARN

Property Consultants • Estate & Letting Agents

Foxglove Cottage is a beautifully extended moorland home with a stunning conservatory kitchen, cosy living spaces, a self-contained annexe and superb courtyard areas, all set in the heart of Minions with sweeping Bodmin Moor views.

THE PROPERTY

Foxglove Cottage is a wonderfully inviting home that blends traditional Cornish character with bright, contemporary living. Every room has been thoughtfully styled, creating a warm, welcoming atmosphere that suits family life, entertaining and peaceful moorland living.

The heart of the home is the spectacular conservatory kitchen which is a vaulted, light-filled space with wraparound glazing and a sociable central island. It flows naturally into a relaxed seating area, making it the perfect spot for morning coffee, family gatherings or evenings with friends.

The main lounge is cosy and colourful, centred around a modern wood-burning stove set beneath a rustic timber mantel. The room also provides a dining space which offers an elegant space for hosting, complete with herringbone flooring and garden views.

A second living area is ideal as a family snug, creative space or music room, with garden access and plenty of natural light. The ground floor also includes two adaptable bedrooms, perfect for guests, hobbies or home-working.

Upstairs, the principal bedroom enjoys its own en-suite, while several further bedrooms offer comfortable, adaptable spaces. Each room feels ready to grow with the family or be repurposed as needed. The bathrooms throughout the property are beautifully finished, with soft stone tiling and modern fittings.

A major advantage is the self-contained one-bedroom annexe, complete with its own entrance, open-plan kitchen-living area and wet-room. It is ideal for extended family, independent teenagers, guests or potential income generation STP.

THE OUTSIDE

The outdoor spaces at Foxglove Cottage are designed for relaxation, play and year-round enjoyment. The central courtyard is beautifully paved and sheltered, creating a sunny, private area perfect for outdoor dining or quiet afternoons with the conservatory doors open.

To the side, a raised deck provides a completely different atmosphere, a private leisure space with space for a hot tub, picnic bench and views stretching out towards the Moor.

The outside space takes in the iconic moorland skyline, offering a peaceful backdrop for children to play, pets to roam or evenings spent watching the stars.

THE LOCATION

Minions is one of Cornwall's most distinctive and atmospheric villages, the highest in the county and surrounded by some of the most dramatic scenery on Bodmin Moor. It is a place where history, landscape and





THE LOCATION

Minions is one of Cornwall's most distinctive and atmospheric villages, the highest in the county and surrounded by some of the most dramatic scenery on Bodmin Moor. It is a place where history, landscape and community come together in a way that feels genuinely special.

From the doorstep, you can walk straight onto open moorland, with the Hurlers stone circles, Cheesewring, Sharp Tor and miles of rugged trails all within easy reach. The area is a haven for walkers, cyclists, horse-riders and anyone who loves the outdoors, offering ever-changing views and a sense of freedom that is hard to find elsewhere.

Despite its wild beauty, Minions retains a warm, welcoming village feel, with a Tea Room, local shop and a friendly community that thrives year-round. Nearby Liskeard provides schools, shops, rail links and everyday amenities, while the wider region offers easy access to both the north and south coasts.

FAQs

Services – Oil heating, mains electricity, water, and drainage.

Built - 1990s approx.

Outside Aspect – South

Tenure – Freehold

Loft – Partially boarded

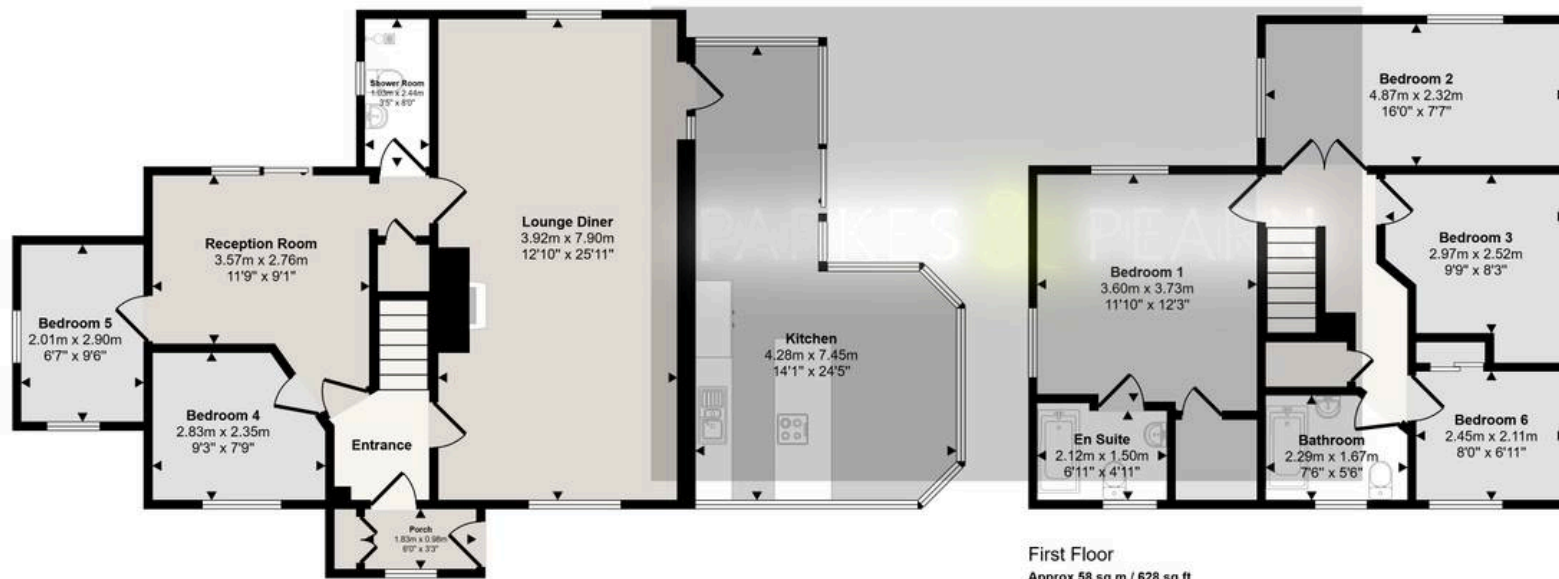
DIRECTIONS

SatNav – PL14 5LE

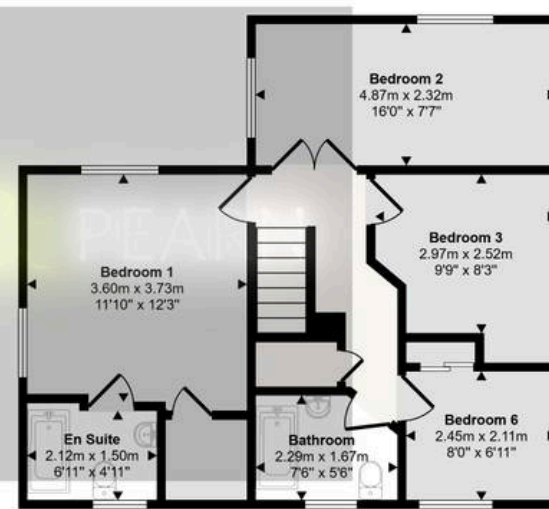
what3words - [///consoles.shapes.grazes](https://www.what3words.com/#!/en/what3words-///consoles.shapes.grazes)



Approx Gross Internal Area
201 sq m / 2164 sq ft



Ground Floor
Approx 93 sq m / 1003 sq ft



First Floor
Approx 58 sq m / 628 sq ft



Annexe
Approx 49 sq m / 532 sq ft

This floorplan is only for illustrative purposes and is not to scale. Measurements of rooms, doors, windows, and any items are approximate and no responsibility is taken for any error, omission or mis-statement. Icons of items such as bathroom suites are representations only and may not look like the real items. Made with Made Snappy 360.



Parkes and Pearn Property Consultants

Parkes & Pearn Estate Agents, 13 Bay Tree Hill - PL14 4BG

01579 343633 • sales@parkesandpearn.co.uk • www.parkesandpearn.co.uk/