



**Purton Stoke, Swindon – SN5 4JG**  
Wiltshire

Guide Price **£600,000**

**mcfarlane**  
property.com

## Purton Stoke

Wiltshire

- Stunning Period Cottage
- Period feature and Charm Throughout
- Sought After Village Setting
- Three Reception Rooms
- Three DOUBLE Bedrooms Optional  
FOURTH (Ground Floor)
- Flexible Accommodation
- Beautifully Presented With Sympathetic  
Decor
- Mature gardens to Side and Rear
- Detached Garage (Possible Conversion  
Opportunity - subject to regs)

A stunning and beautifully presented period stone-built cottage in the sought-after smaller village of Purton Stoke.

Ideally placed in the middle of this picturesque village with its semi-rural setting and direct access to neighbouring countryside.



## Purton Stoke

Wiltshire

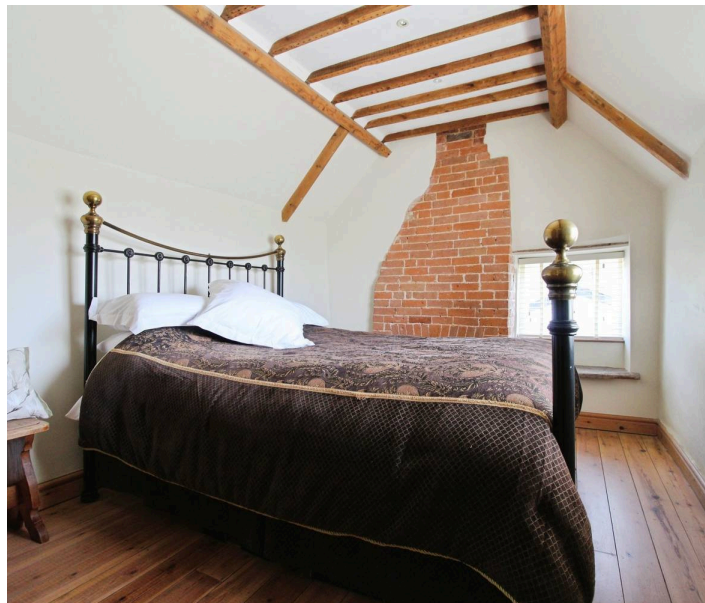
Purton Stoke is a small village in Northern Wiltshire. The former Market town of Cricklade (with its bustling community and High Street) is approximately 2.5 miles away, with the larger village of Purton approximately 1.5 miles.

Council Tax band: F

Tenure: Freehold

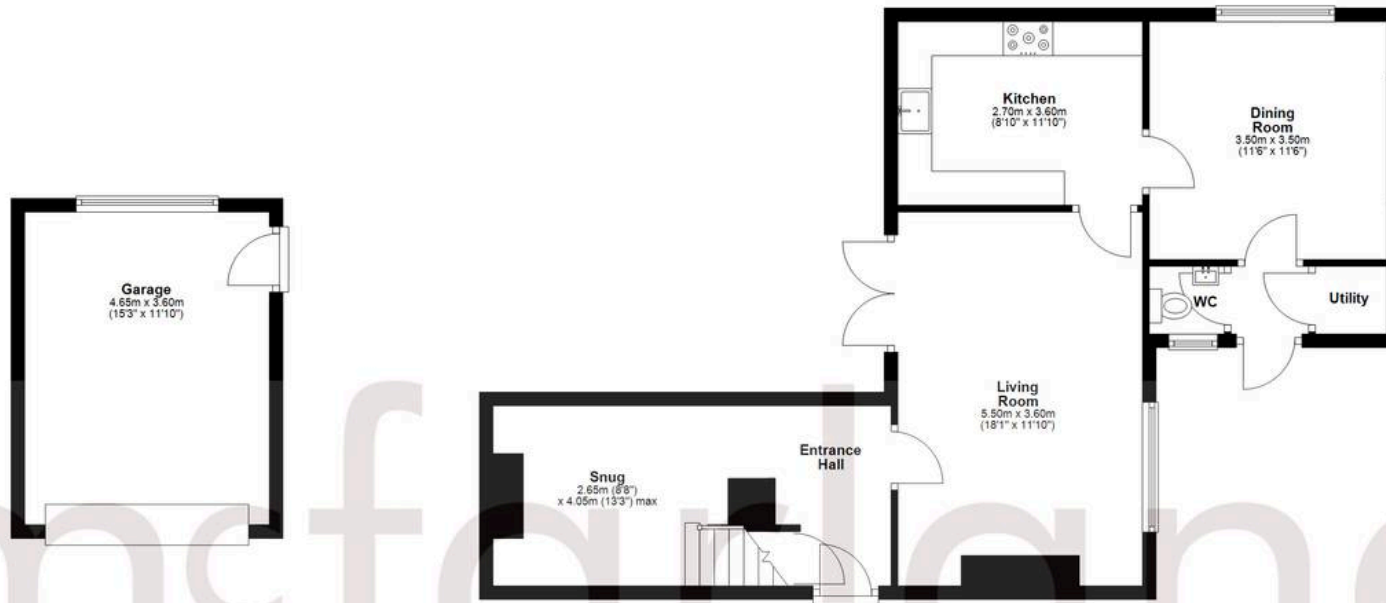
EPC Energy Efficiency Rating: D

EPC Environmental Impact Rating: E

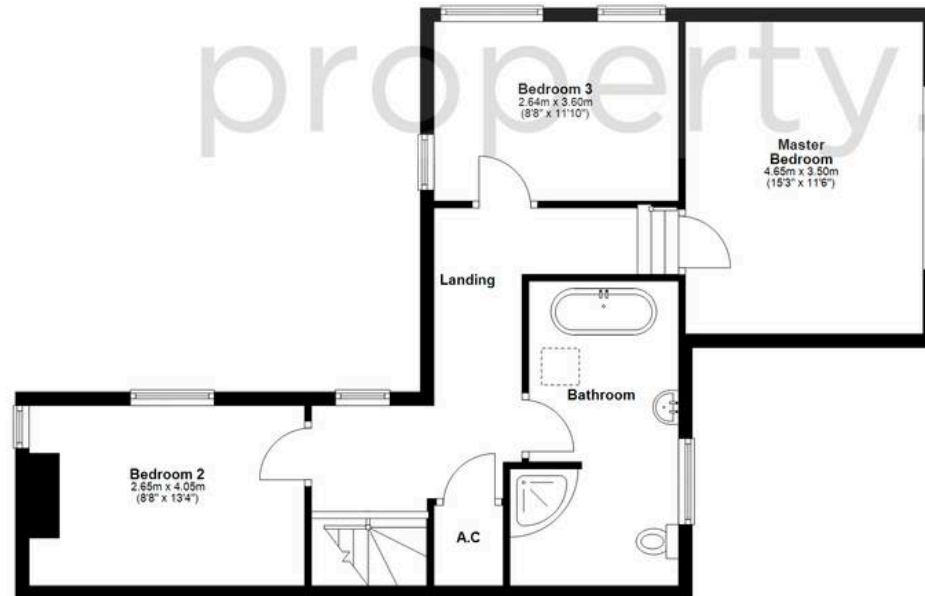


**mcfarlane**  
property.com

**Ground Floor**  
Approx. 78.9 sq. metres (849.7 sq. feet)



**First Floor**  
Approx. 62.4 sq. metres (671.7 sq. feet)



Total area: approx. 141.3 sq. metres (1521.4 sq. feet)

Agents Note: Whilst every care has been taken to prepare these sales particulars, they are for guidance purposes only. All measurements are approximate and for general guidance purposes only and whilst every care has been taken to ensure their accuracy, they should not be relied upon and potential buyers are advised to recheck the measurements.