



CHARLTON LANE, SE7

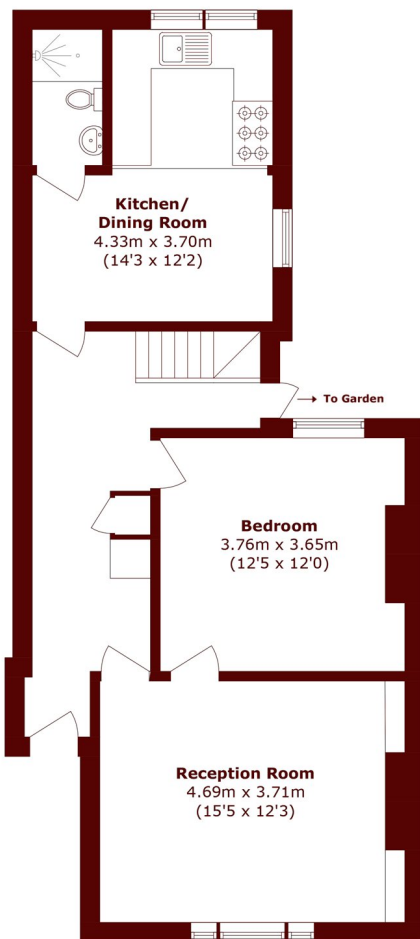
£2,600 per month

A three bedroom terrace house situated within the heart of Charlton.

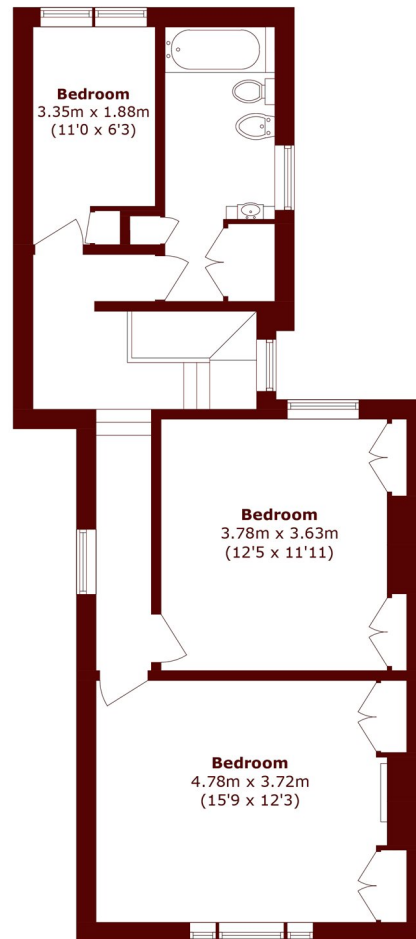
Three bedroom terrace
Living/dining room
Fitted kitchen

Three double bedrooms
Access to garden
Energy rating: D

STEP INSIDE CHARLTON LANE



Ground Floor



First Floor

Total area (approx.): 121.5 sq. m (1,307.8 sq. ft)

Charlton
020 8296 1628

Energy Rating: D We aim to make our particulars both accurate and reliable. However, they are not guaranteed; nor do they form part of an offer or contract. If you require clarification on any points then please contact us, especially if you're traveling some distance to view. Please note that appliances and heating systems have not been tested and therefore no warranties can be given as to their good working order

**MARSH &
PARSONS**