



Powys Avenue, offers over £110,000

- Sold With Sitting Tenants- £850 PCM
- Close Distance To Swansea City Centre
- Potential Investment Purchase
- Driveway
- Modern throughout
- EPC Rating: C



 2  1  1



About the property

Welcome to this delightful two-bedroom end terraced house, perfectly situated in a highly sought-after location with excellent access to public transport links and reputable nearby schools. This neutrally decorated property offers a warm and welcoming atmosphere, making it an ideal opportunity for investors looking to add to their portfolio.

Step inside to find a bright and versatile reception room, perfect for relaxing or entertaining friends and family. The well-appointed kitchen provides a functional and efficient space for meal preparation, while the two inviting bedrooms offer comfortable retreats for peaceful nights' sleep.

The property also features a modern bathroom, ensuring convenience for daily living. Thanks to its neutral décor throughout, you'll find a blank canvas ready for your personal touch—whether you wish to move straight in or add value with a makeover.

Nestled in a thriving community, this home not only benefits from superb local amenities but also boasts close proximity to schools, making it attractive for tenants or future occupants. With fantastic transport connections nearby, commuting and exploring the surrounding area is a breeze.



Accommodation

Living Room

14' 4" x 10' 4" (4.37m x 3.15m)

Bathroom

5' 8" x 5' 4" (1.73m x 1.63m)

Kitchen

11' 1" x 13' 1" (3.38m x 3.99m)

Bedroom 1

14' 4" x 10' 4" (4.37m x 3.15m)

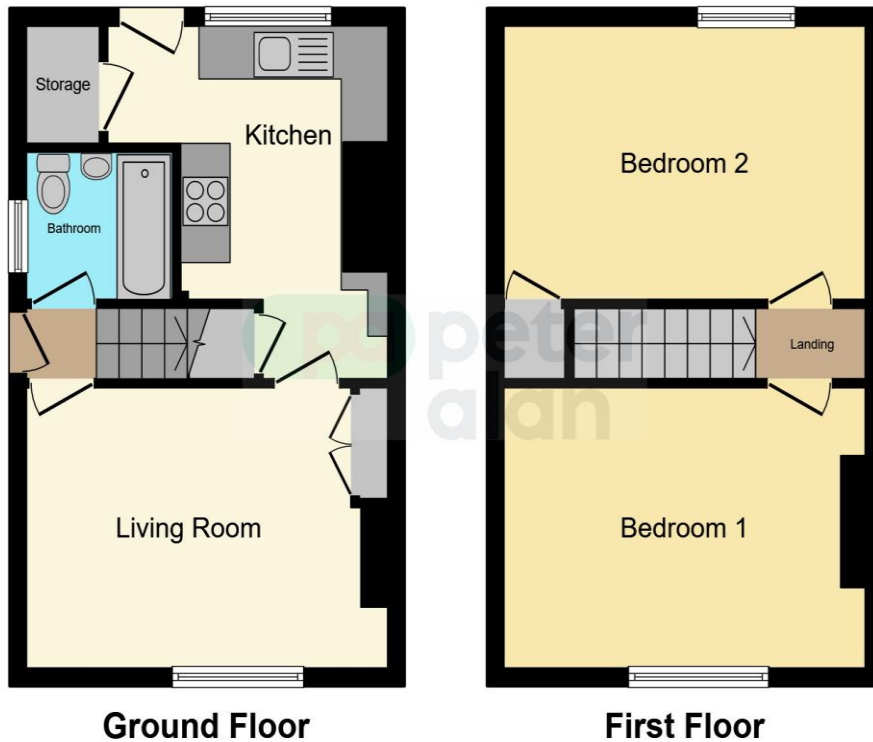
Bedroom 2

11' 1" x 10' 4" (3.38m x 3.15m)

01792 641481

swansea@peteralan.co.uk

Floorplan



This floor plan is for illustrative purposes only. It is not drawn to scale. Any measurements, floor areas (including any total floor area), openings and orientation are approximate. No details are guaranteed, they cannot be relied upon for any purpose and they do not form part of any agreement. No liability is taken for any error, omission or misstatement. A party must rely upon its own inspection(s). Powered by www.focalagent.com

Important Information

Note while we endeavour to make our sales details accurate and reliable, if there is any point which is of particular interest to you, please contact the office and we will be pleased to confirm the position for you. We have not personally tested any apparatus, equipment, fixtures, fittings or services and cannot verify they are in working order or fit for their purposes. Nothing in these particulars is intended to indicate that carpets or curtains, furnishings or fittings, electrical goods (whether wired or not). Gas fires or light fittings or any other fixtures not expressly included form part of the property offered for sale. This computer generated Floorplan, if applicable, is intended as a general guide to the layout and design of the property. It is not to scale and should not be relied upon for dimensions. Tenure: We cannot confirm the tenure of the property as we have not had access to the legal documents. The buyer is advised to obtain verification from their solicitor or surveyor.

Peter Alan Limited is registered in England and Wales under company number 2073153, Registered Office is Cumbria House, 16-20 Hockliffe Street, Leighton Buzzard, Bedfordshire, LU7 1GN. VAT Registration Number is 500 2481 05. For activities relating to regulated mortgages and non-investment insurance contracts, Peter Alan Limited is an appointed representative of Connells Limited which is authorised and regulated by the Financial Conduct Authority. Connells Limited's Financial Services Register number is 302221. Most buy-to-let

pa peter
alan