



Shaftesbury Avenue, Chinatown, W1D  
*£695 pw*

› 2 Bedrooms › 1 Bathroom › Unfurnished

**TAVISTOCKBOW**  
RESIDENTIAL



- › Two double bedrooms
- › One shower room
- › First floor (walk-up)
- › Open plan kitchen
- › Recently refurbished
- › Unfurnished
- › Secondary glazing
- › Feature fireplaces
- › Available mid June
- › Close to Leicester Square and Covent Garden tube stations

This recently refurbished 2 bedroom property is situated on the first floor (walk up) of a period building on Shaftesbury Avenue. The property has been finished to an excellent standard and there is wood flooring and secondary glazing throughout. The 2 bedrooms benefit from built in wardrobes and there is a modern, walk in shower. The reception room is open plan to

the kitchen which includes a dishwasher and washer/dryer. Available mid June, unfurnished, 3 year contract with a 6 months mutual break clause.

Council tax band F.





### WHAT WE LOVE:

Recently refurbished  
Feature fireplaces  
Close to the yummy 'Crosstown'  
Amazing restaurants close by  
Moments from St Anne's Gardens.

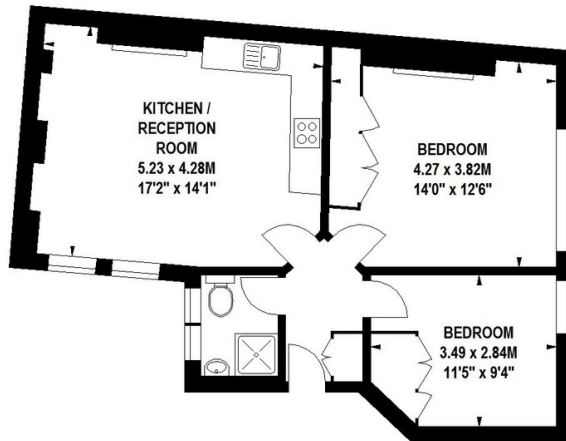
### WHAT YOU NEED TO KNOW:

First floor (walk up)  
Secondary glazing  
Built in wardrobes  
High ceilings  
Westminster city council tax.

# Floorplan

## Egmont House, W1

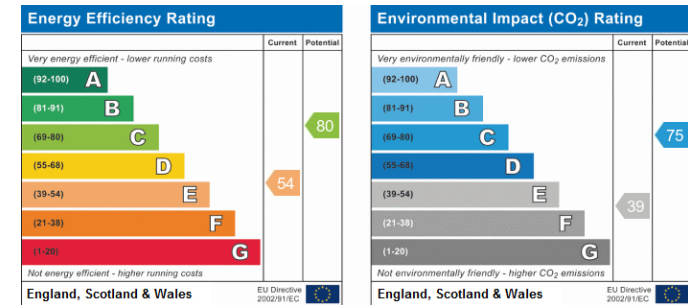
Approximate Gross Internal Area 58 sq m / 624 sq ft



First Floor

Floor Plan produced for Tavistock Bow by Mays Floorplans © . Tel 020 3397 4594  
Illustration for identification purposes only, not to scale  
All measurements are maximum, and include wardrobes and window bays where applicable




# EPC



## About Us

Tavistock Bow is an independent residential agency based in Covent Garden. We are niche, boutique, creative, knowledgeable, professional and approachable. We love what we do and that's why we do it.

## Contact Us

- a.** 21 New Row, Covent Garden, WC2N 4LE
  - t.** 020 7477 2177
  - e.** hello@tavistockbow.com
  - w.** tavistockbow.com
- 



/tavistockbow

/tavistockbow

@tavistockbow

