



Keyes Road, NW2

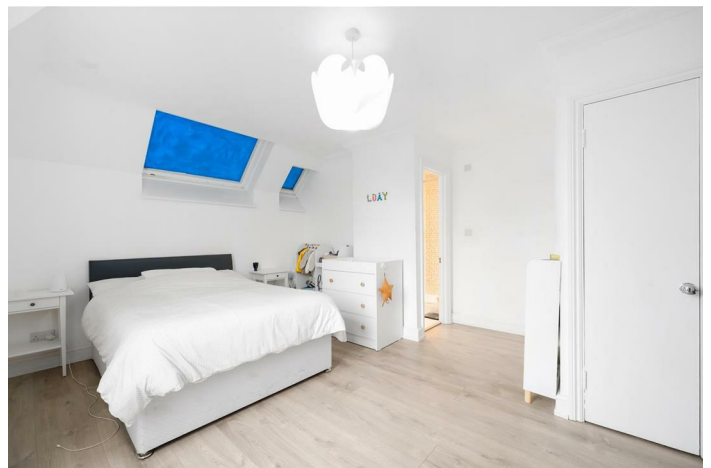
TO LET - £1,700 Per Month

AVAILABLE TO LET 31ST MARCH 2026- is this well presented Top Floor two bedroom flat situated close to Cricklewood Lane.

Offering 561 sq ft of internal living accommodation, the property boasts a bright open plan reception/kitchen with modern fitted appliances, a principal bedroom with an en-suite shower room and a further double bedroom which is serviced by a modern fitted three piece bathroom.

Keyes Road is a quiet residential road within the Mapesbury Conservation Area, situated on the borders of the Mapesbury Dell. The amenities of Willesden Green are within walking distance along with Willesden Green Station (Jubilee- Zone 2) for easy access into Central London.

- AVAILABLE 31ST MARCH 2026- Unfurnished/Furnished
- 2 bedroom, Top Floor flat
- Open plan reception/kitchen
- Close to transport links
- DEPOSIT: £1961
- COUNCIL: Brent (D)



020 8450 9377

rentals@cameronsstiff.co.uk

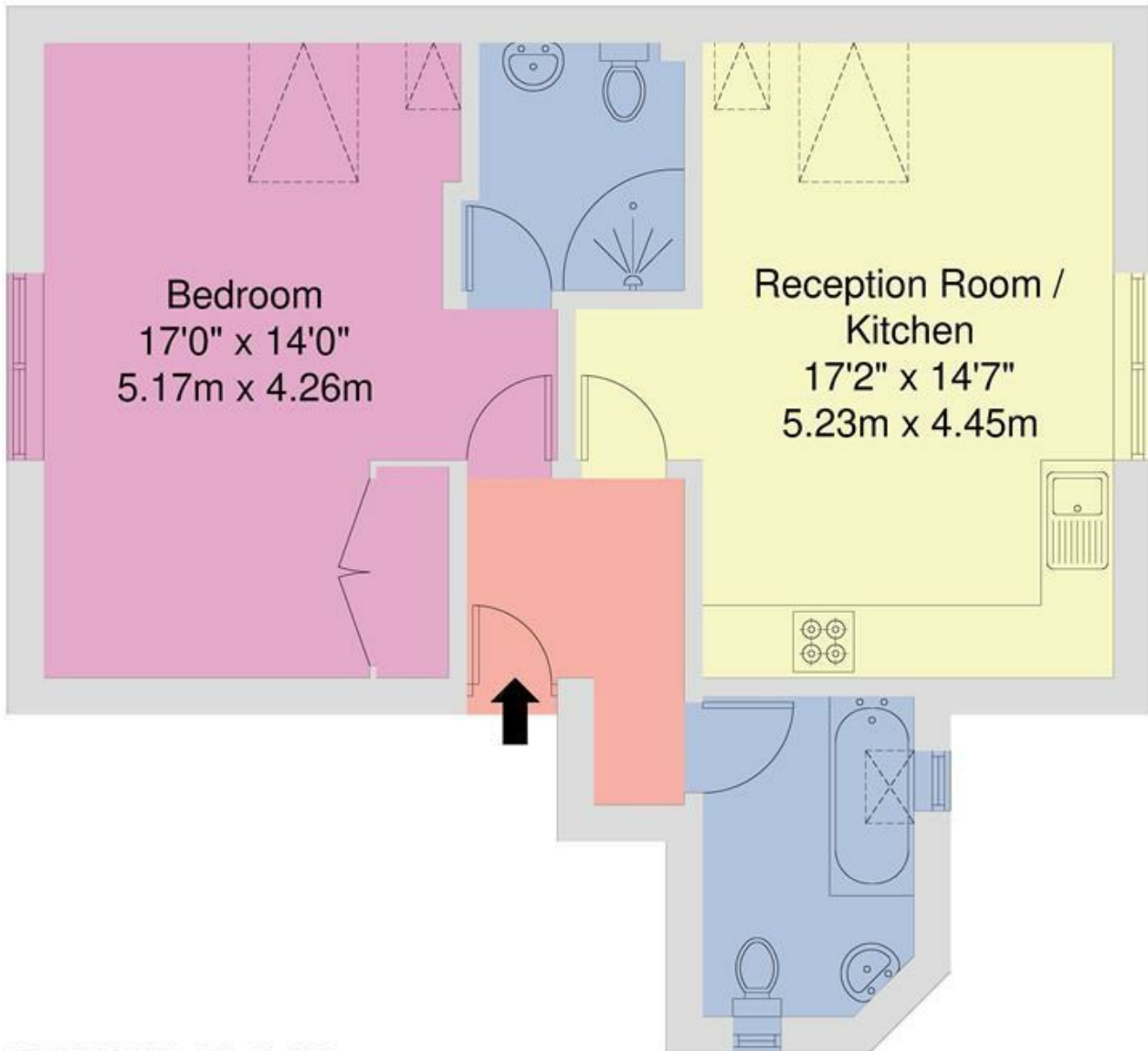
cameronsstiff.co.uk



Keyes Road, NW2

Approximate Area = 52.2 sq m / 561 sq ft

For Identification only - Not to Scale



SECOND FLOOR

EPC: C

Ref: 18970033

Disclaimer: Floorplan produced in accordance with RICS guidelines. While we do not doubt the floorplan accuracy and completeness, you or your advisors should conduct a careful, independent investigation of the property in respect of monetary valuation. Produced for Camerons Stiff & Co.

