



Jasmin Close, Northwood – HA6 1DH

Guide Price **£190,000**



LAWRENCE RAND



Key Features & Description

- Studio Plus
- Good Conditions Throughout
- Shower Room
- Communal Gardens
- Allocated Parking
- Close To Northwood Station

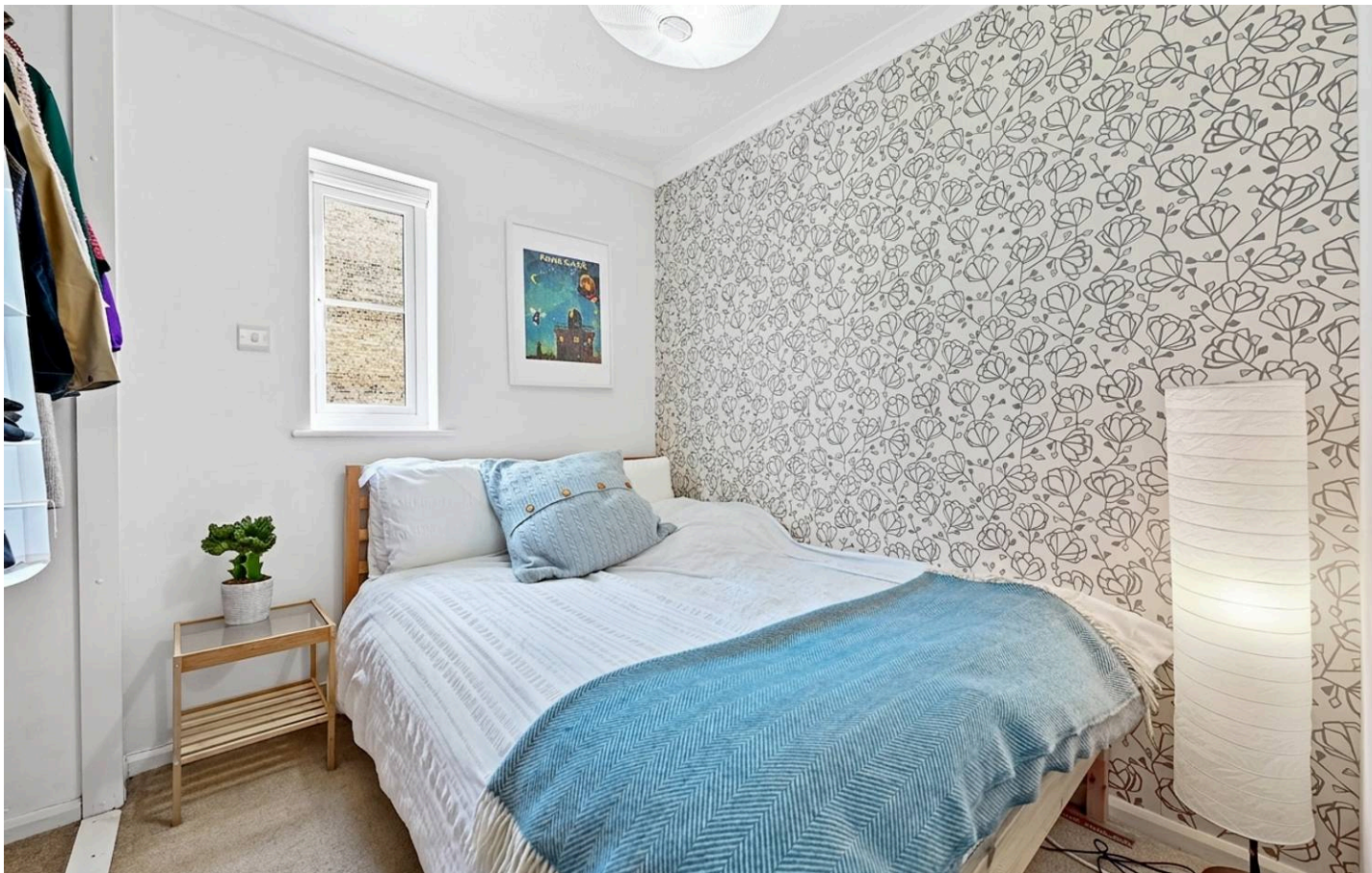
A well-presented studio plus apartment situated in a quiet residential development on the popular Jasmin Close, Northwood. Offered in good condition throughout, this property provides an excellent opportunity for first-time buyers and investors.

The property comprises a bright and spacious reception room with a defined sleeping area, creating a practical and versatile living space. The property further benefits from a modern fitted kitchen and a well-maintained bathroom suite, all finished to a good standard.

Additional features include double glazing, electric heating, and allocated parking. The property is conveniently located within easy reach of Northwood's local shops, amenities, and transport links, including the Metropolitan Line, providing direct access into Central London.

Presented with care by Lawrence Rand – helping you find the place you'll love to call home.





Nearest Stations

- Northwood Hills - approx 0.5 miles
- Northwood Station - approx 0.9 miles
- Pinner station - approx 1.2 miles

Verified Material Information:

Council Tax band: B

EPC Energy Efficiency Rating: E

Lease Years Remaining : 86

Suppliers:

Electricity supply: Mains, Water supply: Mains

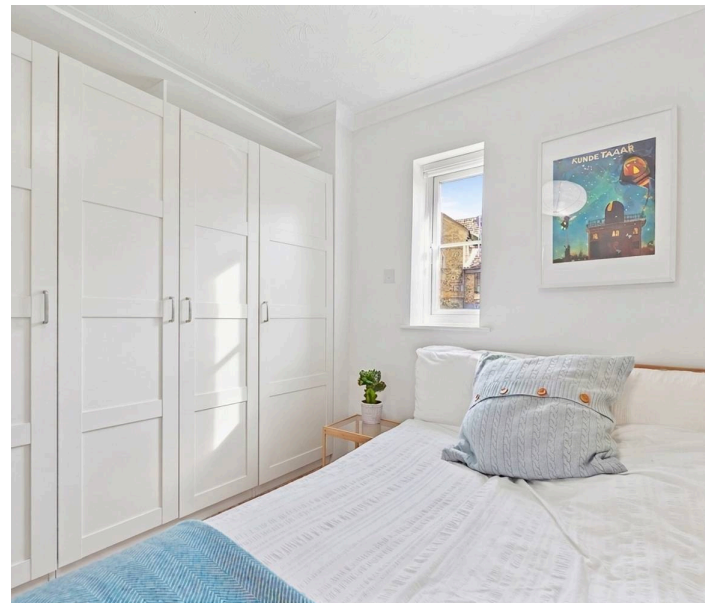
water, Sewerage: Mains

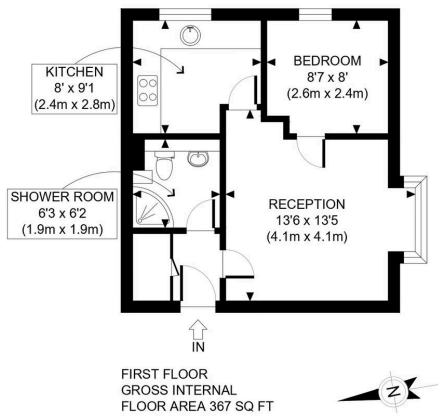
Heating: Electric

Broadband & mobile coverage:

Broadband: FTTP (Fibre to the Premises)

Mobile coverage: O2 - Excellent, Vodafone - Excellent, Three - Excellent, EE - Excellent





APPROX. GROSS INTERNAL FLOOR AREA: 367 SQ FT/ 34 SQM

This plan is for illustrative purposes only and should be used as such by any prospective client. Whilst every attempt has been made to ensure the accuracy of the Floor Plan contained here, measurements of the doors, windows, rooms and any other items are approximate and no responsibility is taken for any errors, omissions, or misstatement. The services, systems and appliances shown have not been tested and no guarantee as to the operability or efficiency can be given.

PROPERTY PHOTO PLANS
THE STEP CHOP FOR PROPERTY PHOTOGRAPHERS

Lawrence Rand
 51 Victoria Road, Ruislip - HA4 9BH
 01895 632211

Sales@lawrence-rand.co.uk
 www.lawrence-rand.co.uk/

Lawrence Rand Limited has made every reasonable effort to ensure the accuracy of the information provided. However, we accept no responsibility for errors, omissions, or misstatements. All measurements, distances, and descriptions are approximate and for guidance only. Prospective purchasers or tenants must verify all details independently. Some images may include AI-generated virtual staging to illustrate the potential of the property and are for visual guidance only. No warranty is given or implied, and these particulars do not form part of any offer or contract. Lawrence Rand reserves the right to amend or withdraw any property without notice.