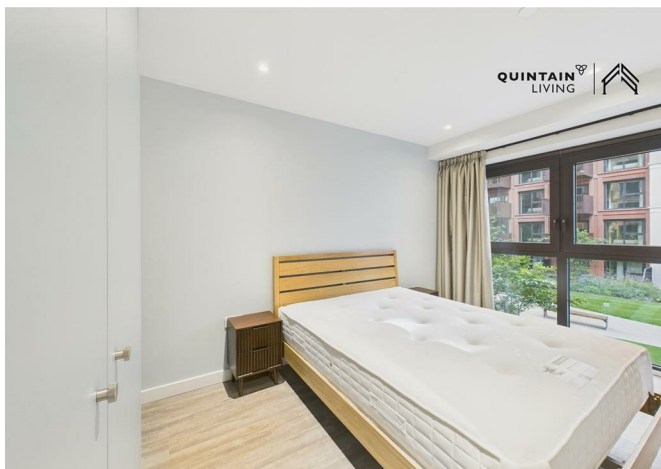




654333 Solar, Marley Street, Wembley Park, HA9 0EH  
£2,078 Per month



654333 Solar, Marley Street, Wembley Park, HA9 0EH

£2,078 Per month

New Offer: Save up to 16% on Your Rent. Solar is designed to celebrate light and space. This apartment features a private balcony or terrace and showcases modernist interiors with warm, earthy tones and luxurious finishes throughout!

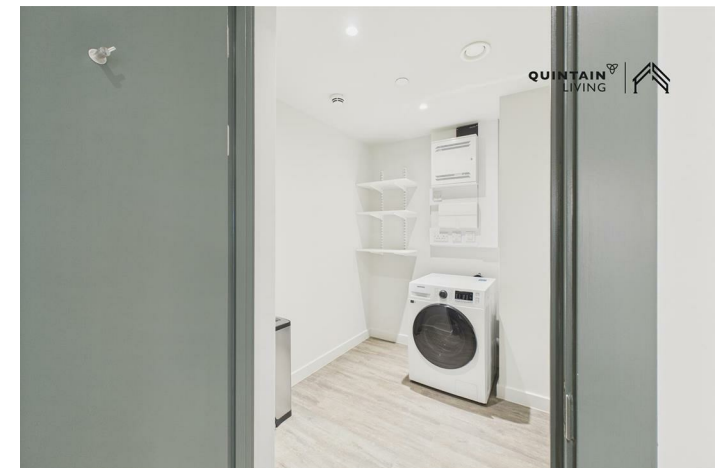
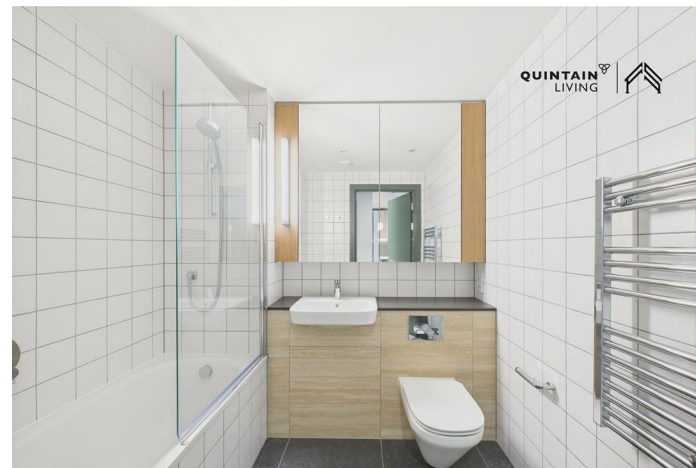
Residents benefit from 24/7 on-site support and concierge services, along with a curated collection of amenities including a state-of-the-art gym, beautifully landscaped gardens, an elegant resident lounge, and an exclusive rooftop terrace.

Wembley Park, one of London's most exciting new districts - home to Bread Ahead, Boxpark, Troubadour Theatre and the London Designer Outlet (around 70 shops, cafés and restaurants plus a nine-screen Cineworld). OVO Arena Wembley, Wembley Stadium and the tube are within a short walk, putting Central London about 12 minutes away via the Jubilee and Metropolitan lines. Trains from Wembley Stadium reach. Managed by Quintain Living, the award-winning team behind Wembley Park. Photos show a very similar apartment in this building however the exact layout/floor/view may vary. Other incentives available T&Cs apply; see Quintain Living website for details. Price before discount: £2194.

## Description



## Situation

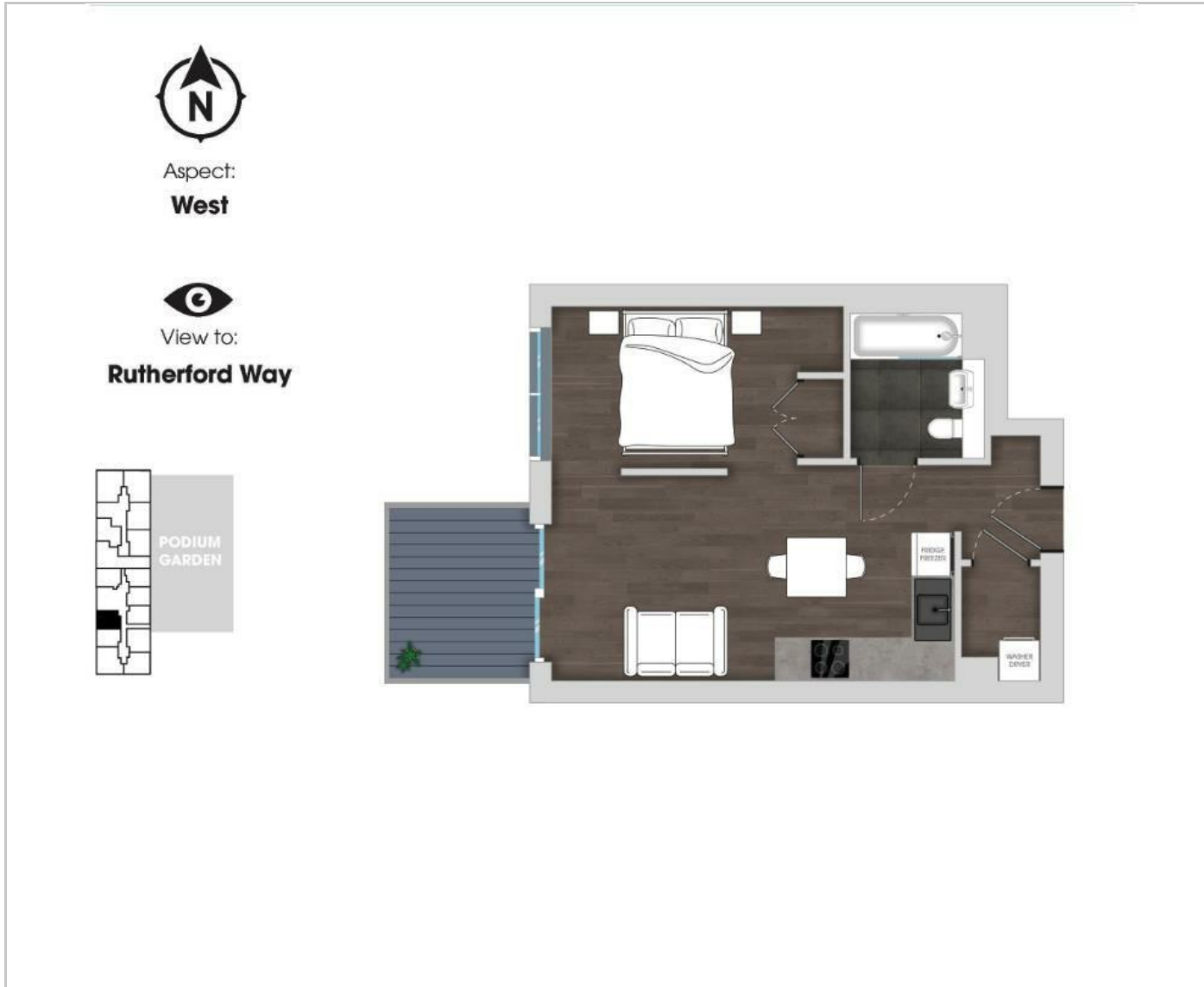


Furnished

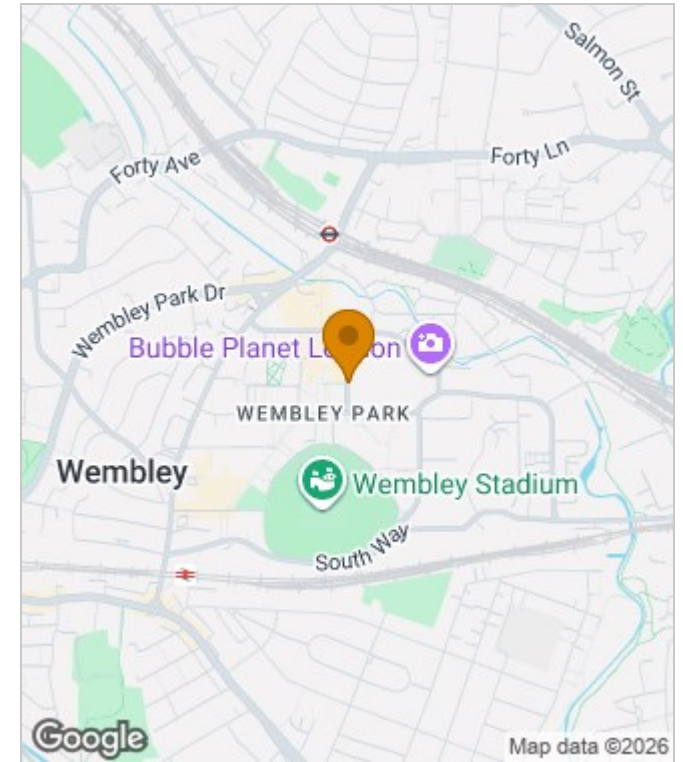
Council Tax Band: B

Available:

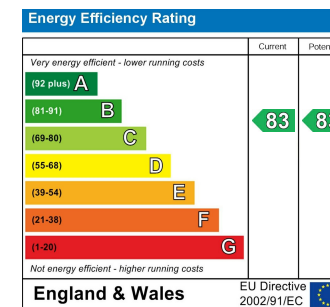
## Floor Plans



## Area Map



## Energy Performance Graph



These particulars, whilst believed to be accurate are set out as a general outline only for guidance and do not constitute any part of an offer or contract. Intending purchasers should not rely on them as statements of representation of fact, but must satisfy themselves by inspection or otherwise as to their accuracy. No person in this firm's employment has the authority to make or give any representation or warranty in respect of the property.