



Eglinton Hill, SE18

£350,000

Situated on the ever-popular Eglinton Hill SE18 is this charming two-bedroom ground floor maisonette, offered to the market in excellent condition throughout and benefiting from direct access to the communal garden. The heart of the home is the impressive open-plan kitchen/reception room measuring over 18ft, providing a bright and spacious living area ideal for both relaxing and entertaining. Large bay windows to the front allow an abundance of natural light to flow through the property. Both bedrooms are well-proportioned, with the principal bedroom offering generous space. The contemporary bathroom is well presented and conveniently positioned off the hallway.

Features

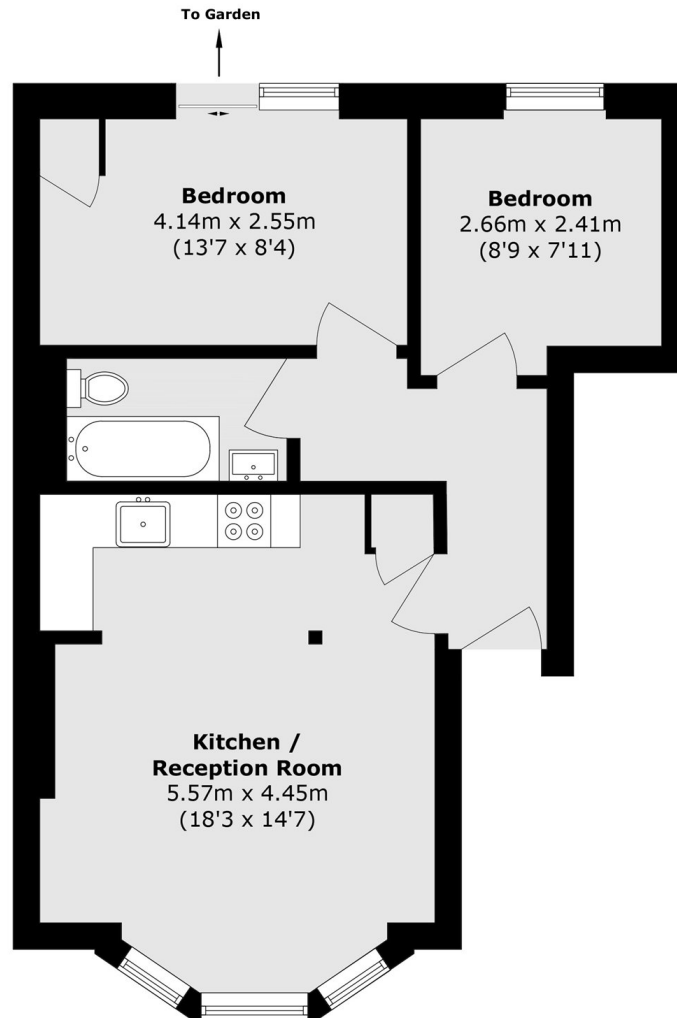
- Ground Floor Flat
- Open Plan Reception and Kitchen
- En-Suite Bathroom
- Communal Garden
- Two Double Bedroom
- Views Of London's Skyline



Eglinton Hill, SE18



Eglinton Hill, London, SE18



Total area (approx.): 52.7 sq. m (567.2 sq. ft)