



Penyrheol Road, offers over £240,000

- Close to M4
- Great School Catchment Area
- Good Sized Bedrooms
- Off Road Parking
- Large Garden
- EPC Rating: D



 3  1  3



About the property

Nestled in a charming location, this characteristic 3-bedroom end terrace cottage offers a delightful blend of traditional style and modern convenience. The property boasts off-road parking and a spacious rear garden, ideal for families or those who love outdoor living.

The ground floor features a cosy lounge, an additional sitting room, dining area, and a well-appointed kitchen, providing versatile living accommodation for day-to-day comfort and entertaining.

Upstairs, you'll find three generously sized bedrooms and a family bathroom, perfect for growing families or guests. The home also benefits from a cellar in the basement, offering additional storage or potential for further development.



Accommodation

Ground Floor

Entrance Hall

Lounge

15' 6" Max x 8' 1" Max (4.72m Max x 2.46m Max)

Dining Room

9' 8" x 8' (2.95m x 2.44m)

Lounge/ Sitting Room

11' 4" Max x 14' 1" Max (3.45m Max x 4.29m Max)

Kitchen

15' 6" Max x 9' 8" Max (4.72m Max x 2.95m Max)

First Floor

Landing

Bedroom One

14' Max x 14' 4" Max (4.27m Max x 4.37m Max)

Bedroom Two

9' 6" Max x 14' 1" (2.90m Max x 4.29m)

Bedroom Three

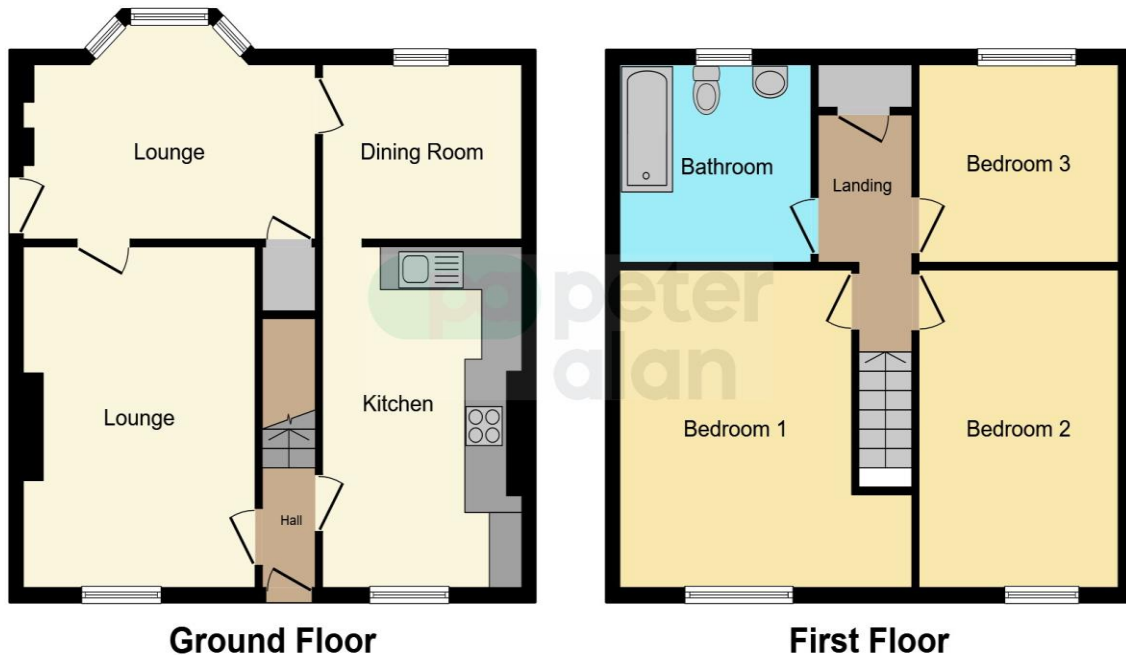
10' 4" x 8' 9" (3.15m x 2.67m)

Bathroom

01792 894422

gorseinon@peteralan.co.uk

Floorplan



This floor plan is for illustrative purposes only. It is not drawn to scale. Any measurements, floor areas (including any total floor area), openings and orientation are approximate. No details are guaranteed, they cannot be relied upon for any purpose and they do not form part of any agreement. No liability is taken for any error, omission or misstatement. A party must rely upon its own inspection(s). Powered by www.focalagent.com

Important Information

Note while we endeavour to make our sales details accurate and reliable, if there is any point which is of particular interest to you, please contact the office and we will be pleased to confirm the position for you. We have not personally tested any apparatus, equipment, fixtures, fittings or services and cannot verify they are in working order or fit for their purposes. Nothing in these particulars is intended to indicate that carpets or curtains, furnishings or fittings, electrical goods (whether wired or not). Gas fires or light fittings or any other fixtures not expressly included form part of the property offered for sale. This computer generated Floorplan, if applicable, is intended as a general guide to the layout and design of the property. It is not to scale and should not be relied upon for dimensions. Tenure: We cannot confirm the tenure of the property as we have not had access to the legal documents. The buyer is advised to obtain verification from their solicitor or surveyor.

Peter Alan Limited is registered in England and Wales under company number 2073153, Registered Office is Cumbria House, 16-20 Hockliffe Street, Leighton Buzzard, Bedfordshire, LU7 1GN. VAT Registration Number is 500 2481 05. For activities relating to regulated mortgages and non-investment insurance contracts, Peter Alan Limited is an appointed representative of Connells Limited which is authorised and regulated by the Financial Conduct Authority. Connells Limited's Financial Services Register number is 302221. Most buy-to-let

