



**Price**  
**£595,000**

**Freehold**

4x  2x  3x 

**Sunnyside House, Cliff  
Road, Lake, Isle of  
Wight, PO36**

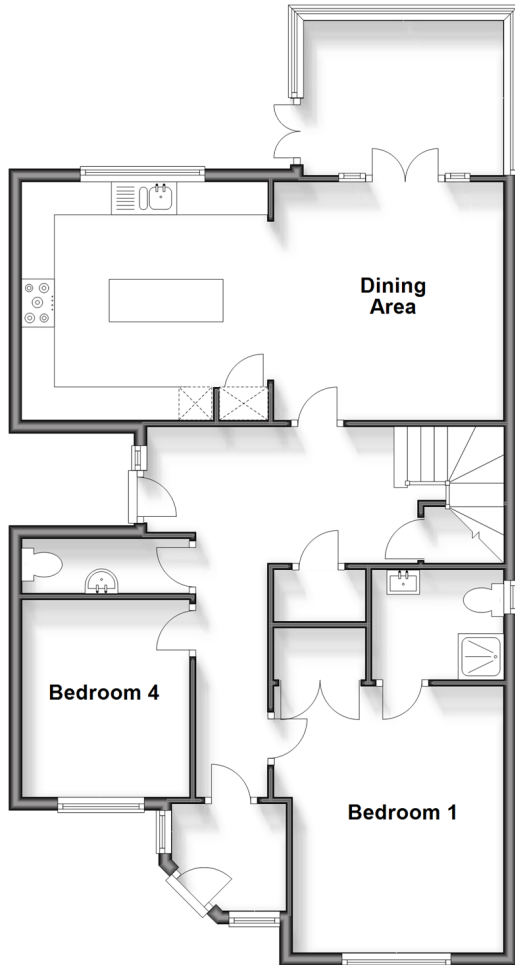
**OVER 60?**

Secure this property  
for up to **59% less!**

**Pittis**   
Helping you move forwards

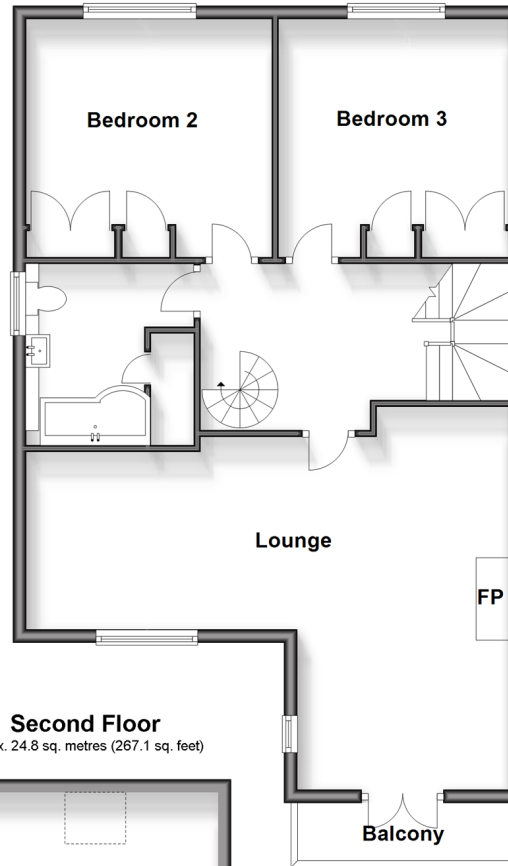
## Ground Floor

Approx. 83.5 sq. metres (899.0 sq. feet)



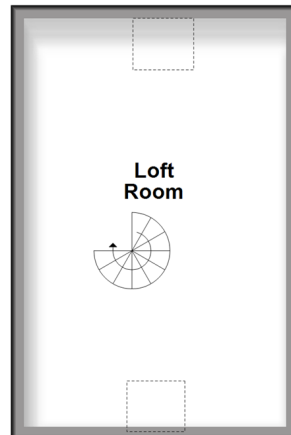
## First Floor

Approx. 76.3 sq. metres (821.0 sq. feet)



## Second Floor

Approx. 24.8 sq. metres (267.1 sq. feet)



## Accommodation

### GROUND FLOOR

Entrance Porch

Hallway

Bedroom 1: 13'5 x 11'6 (4.09m x 3.51m)

En Suite Shower Room

Bedroom 4: 10'1 x 8'8 (3.08m x 2.64m)

Cloakroom

Dining Area: 12'1 x 11'6 (3.69m x 3.51m)

Kitchen Area: 12'1 x 11'8 (3.69m x 3.56m)

Conservatory: 11'6 x 8'4 (3.51m x 2.54m)

### FIRST FLOOR

Landing

Lounge: 23'6 x 18'7 (7.17m x 5.67m)

Balcony

Bathroom

Bedroom 2: 12'1 x 12'1 (3.69m x 3.69m)

Bedroom 3: 12'1 x 11'2 (3.69m x 3.41m)

### SECOND FLOOR

Landing

Loft Room: 19'8 x 13'2 (6.00m x 4.02m)

### OUTSIDE

Driveway

Rear Garden



## Main features

- Stunning & exceptionally large detached house offered chain free
- Spectacular panoramic views of both Culver Cliff & the sea
- An abundance of rooms lending itself to a variety of uses and accommodation formats
- Large driveway with ample parking for multiple vehicles



### Nearest Schools

The Bay CE School  
Shanklin C of E Primary Schools  
Gatten & Lake Primary School  
Shanklin Pre-School & Nursery  
Brading CE Primary School



### Transport Information

Local buses providing Island wide connections plus local train station with direct links to Ryde Pier Head.



### Address

Sunnyside House, Cliff Road, Lake, Isle of Wight, PO36



### Directions

For directions to this property please contact us.



Call Sandown Branch 01983 407444 ■ [pittis.co.uk](http://pittis.co.uk)



- Legal advice should be taken to verify fixtures/fittings, planning, alterations and/or lease details
- Appliances & services are untested, dimensions are approximate and floor plans are not to scale
- Through a Homewise Home For Life Plan people aged 60+ can secure this property for up to 59% less, by purchasing a Lifetime Lease.

<b>EPC RATING</b> Lightbulb icon   4 bars	<b>CURRENT:</b> D(65)	<b>POTENTIAL:</b> C(76)
60902986/20250616/BB/NR		