

Castles

OFFERS IN EXCESS OF

£230,000

Barrowfield Close

London, N9 0HA

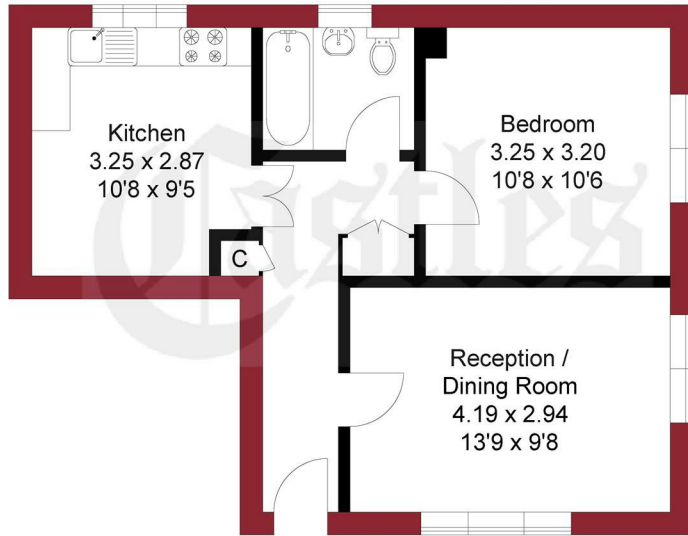
PROPERTY SUMMARY

Castles are delighted to present this well maintained 2nd floor one bedroom flat; within half a mile of Edmonton Green shopping center and walking distance to Edmonton Green Rail station. The flat benefits from a 3 piece bathroom suite, Modern kitchen and bathroom, gas central heating and can be offered on a chain free basis.





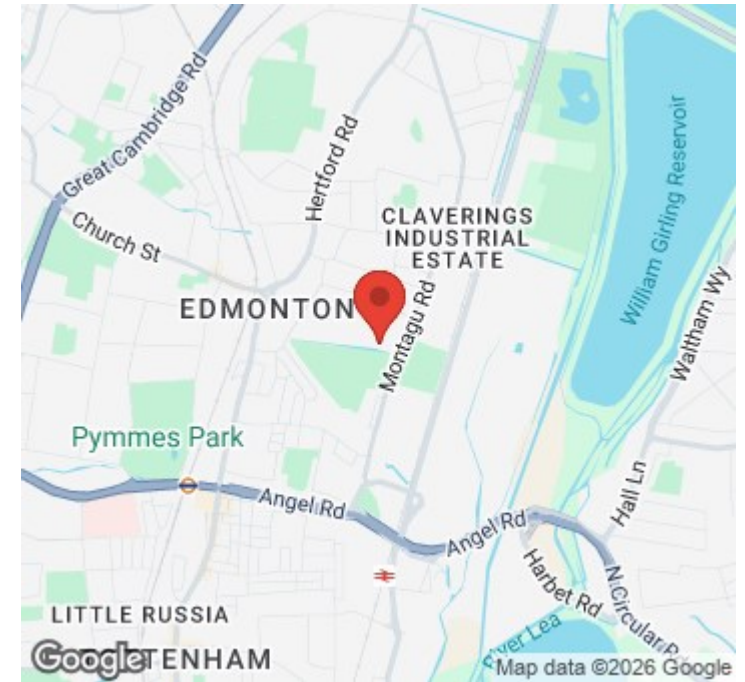
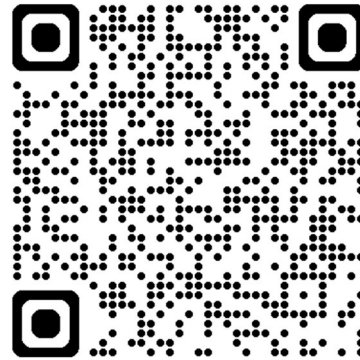
APPROXIMATE GROSS INTERNAL AREA
43.61 sqm / 469.41 sqft



SECOND FLOOR

THIS PLAN IS FOR ILLUSTRATION ONLY AND MAY NOT BE
REPRESENTATIVE OF THE PROPERTY

For a guide to the area
please scan this code for
more information



House

Leasehold

Council: Edmonton

Council Tax Band: B

Lease Remaining: 83 Years

Service Charge: £1,257.62

Ground Rent: £10.00

Agents Note: Whilst every care has been taken to prepare these particulars, they are for guidance purposes only. All measurements are approximate and are for general guidance purposes only and whilst every care has been taken to ensure their accuracy, they should not be relied upon and potential buyers/tenants are advised to recheck the measurements



OFFICE ADDRESS

438 Hertford Road
Edmonton
London
N9 8AB

OFFICE DETAILS

020 8804 8123
edmonton@castles.london
<https://www.castles.london/>

Energy Efficiency Rating		
	Current	Potential
Very energy efficient - lower running costs		
A (92-101)		
B (81-91)		
C (69-80)		
D (55-68)		
E (39-54)		
F (21-38)		
G (1-20)		
Not energy efficient - higher running costs		
England & Wales	73	79
EU Directive 2002/91/EC		