

OVER 60?

Secure this property
for up to **59% less!**



Guide Price

£760,000

Freehold

4x  2x  1x 

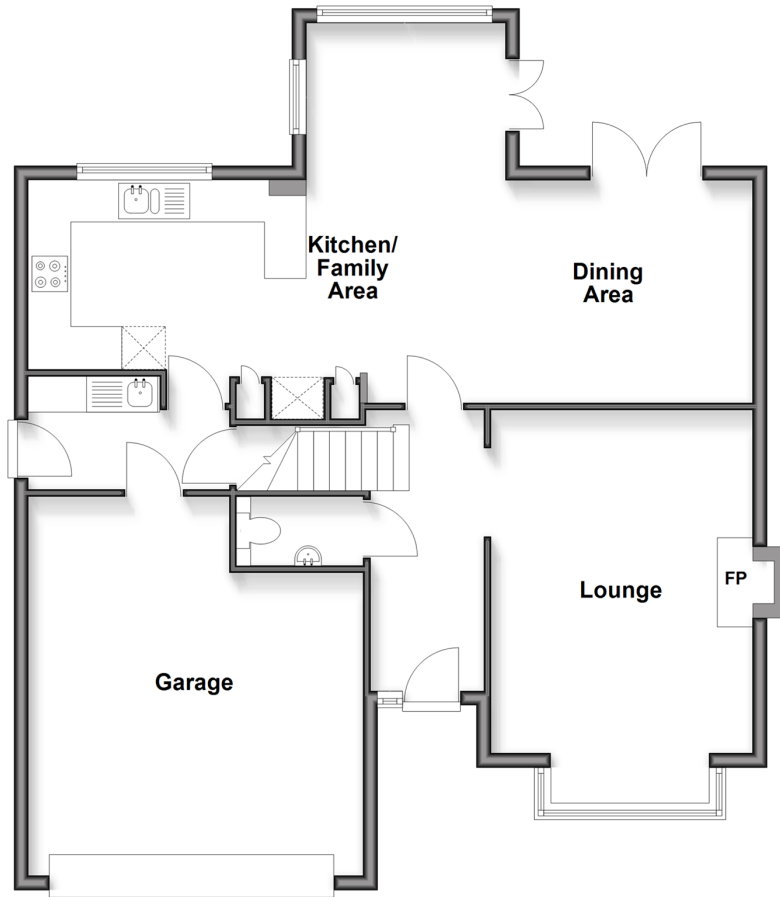
Timberley Gardens, Uckfield, East Sussex,

TN22

cubitt & west
Helping you move forwards

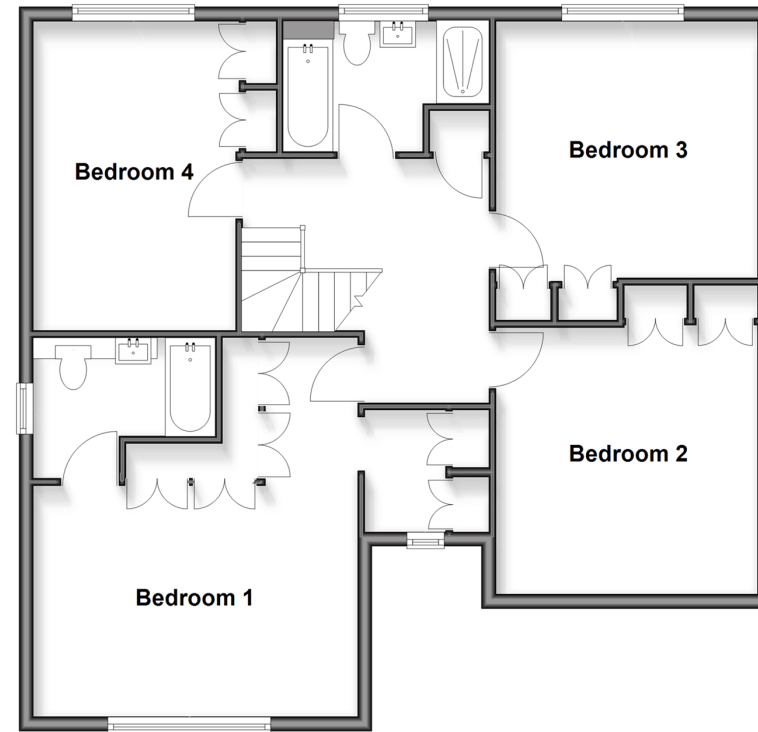
Ground Floor

Approx. 95.4 sq. metres (1027.0 sq. feet)



First Floor

Approx. 88.1 sq. metres (947.9 sq. feet)



Accommodation

GROUND FLOOR

Hallway
Cloakroom
Lounge: 18'3 x 12'0 (5.57m x 3.66m)
Kitchen/Family Area: 33'4 x 17'4 (10.17m x 5.29m)
Dining Area: 11'2 x 10'3 (3.41m x 3.13m)
Utility Room

FIRST FLOOR

Landing
Bedroom 1: 17'6 x 15'1 (5.34m x 4.60m)
Dressing Area
Ensuite Bathroom
Bedroom 2: 12'6 x 12'2 (3.81m x 3.71m)
Bedroom 3: 12'1 x 11'9 (3.69m x 3.58m)
Bedroom 4: 14'4 x 9'5 (4.37m x 2.87m)
Bathroom

OUTSIDE

Front & Rear Gardens
Double Garage & Driveway



Main features

- A magnificent family home with double garage, driveway & sunny, tiered rear garden
- Beautifully presented with downstairs cloakroom, ensuite bathroom & separate family bathroom
- Impressive open-plan kitchen/family/dining area overlooking the garden
- Bay fronted living room with log burning stove
- Close to the town centre, shops, cafes, schools and mainline station



Nearest Schools

Primary Schools: Harlands Primary 0.7 miles, St Philip's Catholic Primary 0.7 miles, Rocks Park Primary 1.1 miles

Secondary Schools: Uckfield Community Technology College 1.6 miles, Ringmer Community College 6.8 miles



Transport Information

Train Stations: Uckfield 0.8 miles, Buxted 4.1 miles, Plumpton 7.4 miles



Address

Timberley Gardens, Uckfield, East Sussex, TN22



Directions

For directions to this property please contact us.



cubitt&west
Helping you move forwards

Call Uckfield Branch 01825 768915 ■ cubittandwest.co.uk



- Legal advice should be taken to verify fixtures/fittings, planning, alterations and/or lease details
- Appliances & services are untested, dimensions are approximate and floor plans are not to scale
- Through a Homewise Home For Life Plan people aged 60+ can secure this property for up to 59% less, by purchasing a Lifetime Lease



22824620/20260225/JL/DK