



SIMPLE LIFE



SIMPLE LIFE



Tenlands Drive, Prescott, L34

£1,215 PCM

Prescot Park is located within Prescot, Knowsley. This development is part of a wider scheme to transform the area. Many house builders are working alongside each other to offer a stunning selection of new homes and local communities.

The Ellesmere is a stunning home built with your needs in mind. Downstairs, there is a generous living room, hallway and WC. The rear of the property has a magnificent living/kitchen area with a range of contemporary fitted units with integrated appliances. The room has French windows opening onto and overlooking the rear garden as well as a series of skylights which flood the room with light – an ideal space for both family time and entertaining.

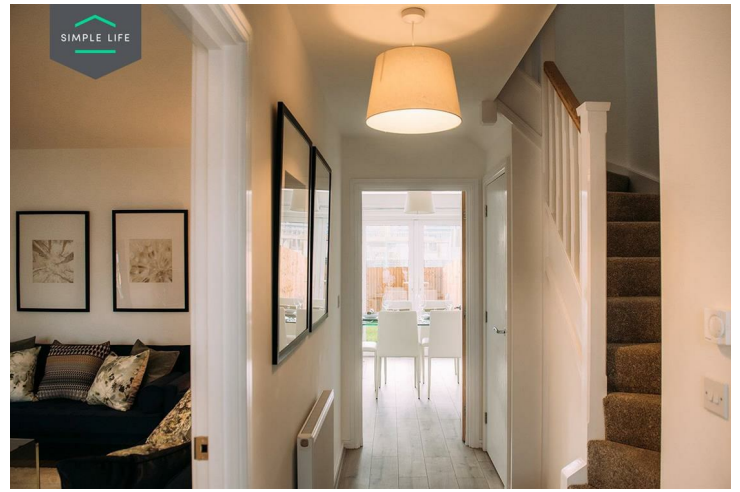
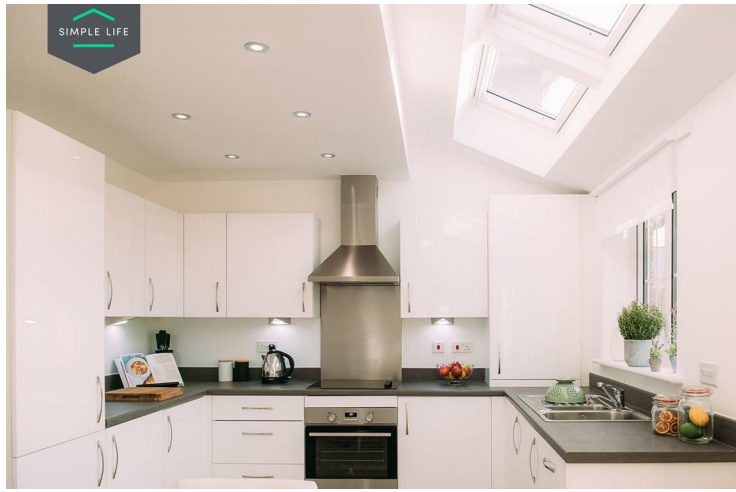
Upstairs there is a spacious family bathroom complete with a bath and shower, a master bedroom with fitted, mirrored wardrobes and two further well-proportioned bedrooms. At the top of the stairs you will also find a handy store cupboard.

At Prescot Park, getting about is easy with Prescot train station just 1.1 miles away and Huyton train station 1.7 miles away, supplying direct services to Liverpool and Manchester. Regular bus services are also available on Manchester Road, a short walk away, arriving every 20 minutes between St Helens and Liverpool. When travelling by car, the M57 is a mile away from the development offering links to Liverpool and the M62 to Manchester and Warrington.

To visit Prescot Park, please use postcode L34 1NS in your Satnav and look for Home Bargains, just off of Manchester Road

Deposit: £1400
Holding deposit: £280
Unfurnished
Council tax: B
Available 20th February 2026





Key Features

- Private driveway
- Fitted wardrobes to master bedroom
- Fridge freezer
- Oven and hob
- Dark ash style worktops
- Security alarm system
- Dishwasher
- Washing/drying machine
- Light wash wood effect flooring
- Modern, white kitchen units

Location

