

WE VALUE



YOUR HOME



Andrew Road, Wallingford
Offers Over £180,000



Situated in the historic market town of Wallingford, this first-floor apartment presents a great opportunity. With its own private front door leading up to the apartment, the property offers a real sense of independence.

Conveniently located within a 20-minute walk of the town centre, the accommodation comprises a lounge with an open fireplace, a double bedroom, kitchen and separate utility area.

Outside, the property benefits from an enclosed rear garden, a rare feature for an apartment, along with an outbuilding providing useful storage.

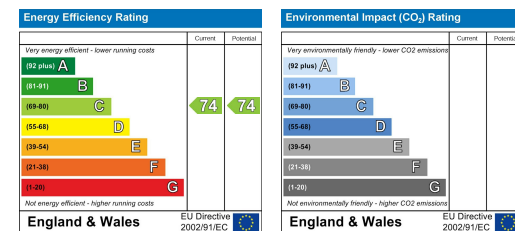
What The Owner Says...

"This has been the perfect first home for our family. The area has everything you could need just a short walk away."



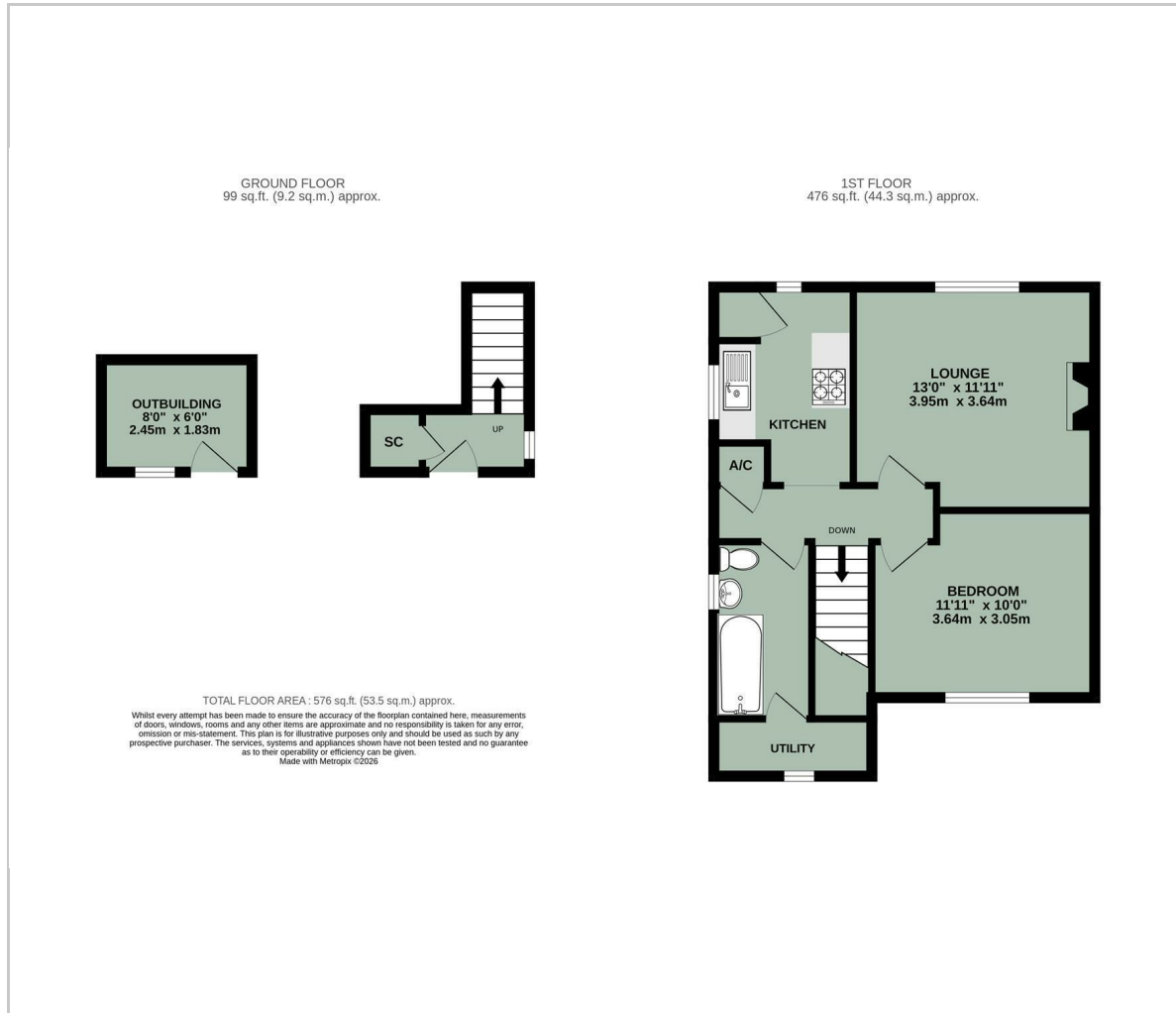


- PRIVATE ENCLOSED GARDEN WITH OUTBUILDING
- KITCHEN & SEPARATE UTILITY ROOM
- LOUNGE WITH OPEN FIREPLACE
- DOUBLE BEDROOM
- FAMILY BATHROOM
- PRIVATE FRONT DOOR



Energy Efficiency Graph

Floor Plan



Area Map



Viewing

Please contact our In House Sales & Lettings Office on 01491 839999 opt.1 if you wish to arrange a viewing appointment for this property or require further information.

These particulars, whilst believed to be accurate are set out as a general outline only for guidance and do not constitute any part of an offer or contract. Intending purchasers should not rely on them as statements of representation of fact, but must satisfy themselves by inspection or otherwise as to their accuracy. No person in this firm's employment has the authority to make or give any representation or warranty in respect of the property.

28 St Martins Street, Wallingford, Oxfordshire, OX10 0AL
Tel: 01491 839999 opt.1 Email: sales@inhouseestateagents.co.uk www.inhouseestateagents.co.uk