

KEYSTONE



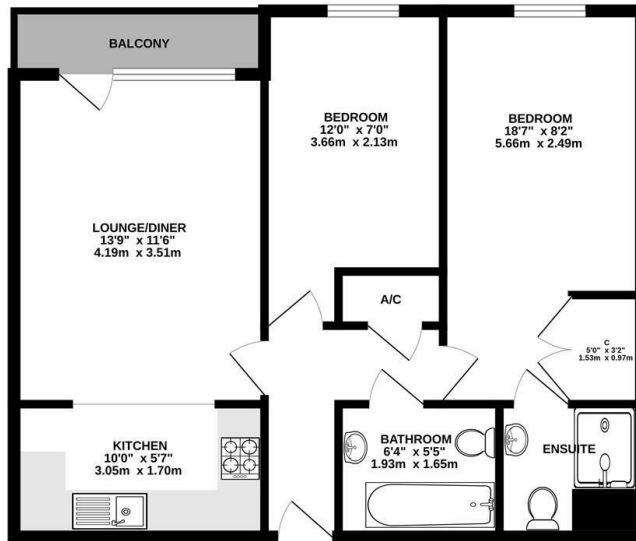
Yeoman Close, Ipswich, IP1 2QB

£875 PCM

- Part furnished Two Bedroom Apartment
- Kitchen
- Balcony
- Available NOW
- Second Floor
- En-Suite shower room
- Bathroom with a shower
- Lounge/Diner
- Gated Parking
- EPC Rating C



GROUND FLOOR



We have every attempt to ensure the accuracy of the floorplan contained here, measurements of doors, windows, rooms and any other items are approximate and no responsibility is taken for any error, omission or misstatement. This plan is for guidance purposes only and should be used as such by any prospective purchaser. The services, systems and appliances shown have not been tested and no guarantee as to their operability or efficiency can be given. Made with Metropix 3.0.025

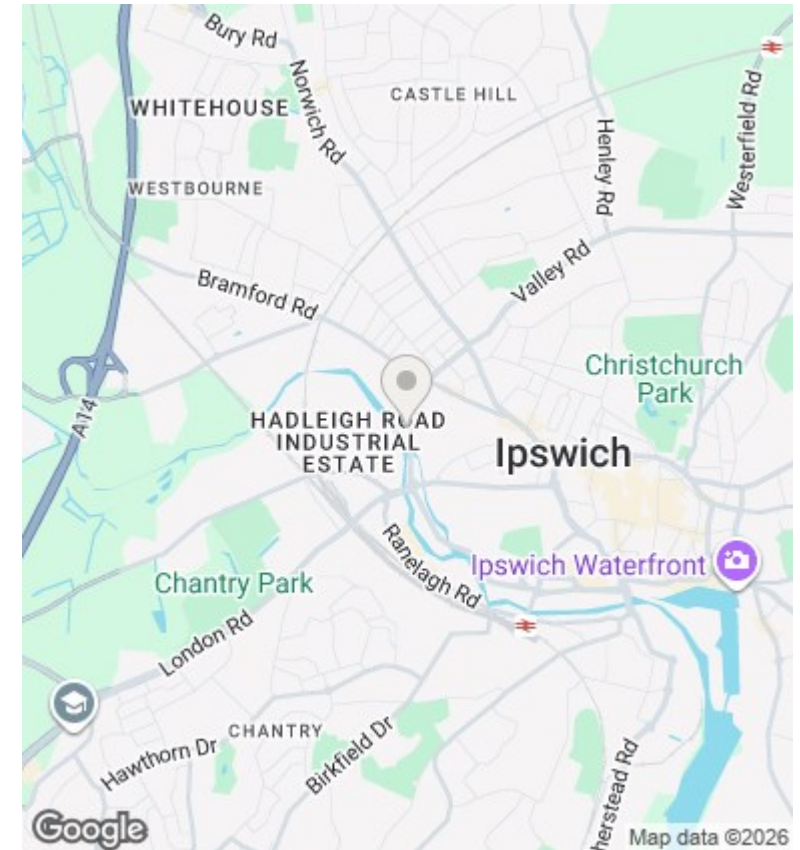
Directions

Viewings

Viewings by arrangement only. Call 01473 221 399 to make an appointment.

EPC Rating:

C



Energy Efficiency Rating		
	Current	Potential
Very energy efficient - lower running costs		
(92 plus) A		
(81-91) B		88
(69-80) C	79	
(55-68) D		
(39-54) E		
(21-38) F		
(1-20) G		
Not energy efficient - higher running costs		
England & Wales		EU Directive 2002/91/EC