



Longfield Estate, SE1

£350,000

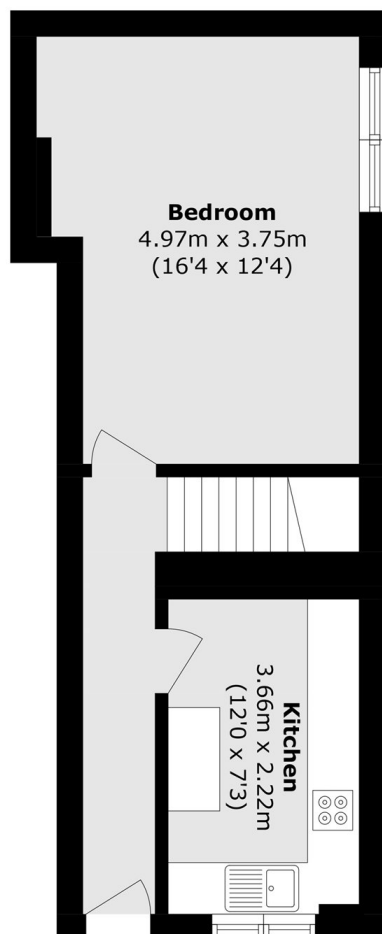
An attractive split-level flat offering a separate kitchen and a spacious living room ideal for both relaxing and entertaining. The property includes three double bedrooms, a family bathroom, and a separate WC, providing well-balanced accommodation throughout. Offered chain free, it also benefits from permit parking availability in a convenient location.

Set on the edge of the Thorburn Square Conservation Area, Stansfeld House enjoys a prime SE1 position with excellent connectivity across London. Bermondsey, London Bridge, and South Bermondsey stations are all within easy reach, providing fast and convenient access to the City and beyond.

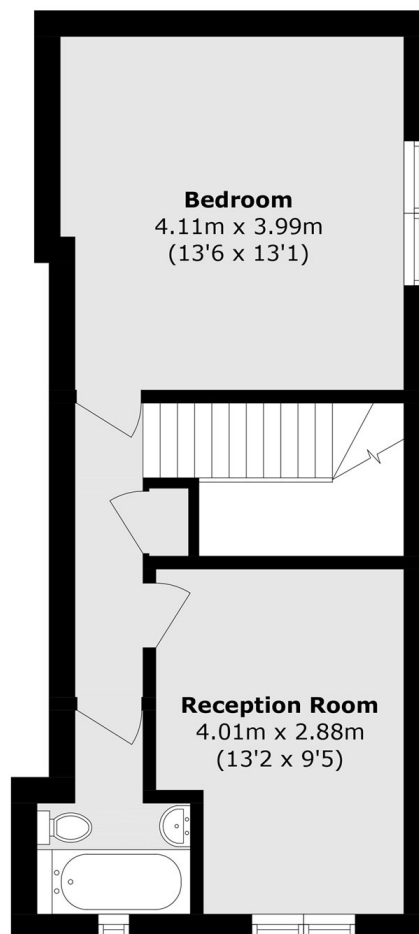
Features

- Split Level
- Three Double Bedrooms
- Large Living Room
- Separate Kitchen
- Permit Parking
- Chain Free Sale

Longfield Estate, London, SE1



Second Floor



Third Floor

Total area (approx.): 73.9 sq. m (795.5 sq. ft)