



**Whitsun Pasture, Willen Park, Milton Keynes, MK15 9DQ**

**welcome to**

## **Whitsun Pasture, Willen Park, Milton Keynes**

Situated in the highly sought-after area of Willen Park, this two-bedroom, end-terraced property offers well-presented and practical accommodation, ideal for first-time buyers, downsizers, or investors.

### **Entrance Hall**

Double-glazed door to the front, stairs to the first floor and door to the sitting room.

### **Sitting Room**

2 electric storage heaters and 2 double-glazed windows to the rear.

### **Kitchen**

Fitted with a mix of wall and base units with work surface over, stainless steel sink with drainer and space for a cooker. Space for a washing machine and a fridge/freezer. Double-glazed window to the front and double-glazed doors to the conservatory.

### **Conservatory**

Built of brick and Upvc construction with double-glazed windows to the rear and side. Double-glazed doors leading out to the garden.

### **First Floor Landing**

Stairs from the ground floor, storage cupboard and loft hatch.

### **Bedroom One**

Storage, electric radiator and double-glazed window to the rear.

### **Bedroom Two**

Electric radiator and double-glazed window to the rear.

### **Bathroom**

Fully tiled with wash hand basin, low-level WC and a shower cubicle. Double-glazed obscured window to the front.

### **Outside**

#### **Front Garden**

Gravel frontage with shrubs and steps up to the front door.

#### **Rear Garden**

Enclosed by fencing with gated side access. The garden is laid with gravel and shrubs.

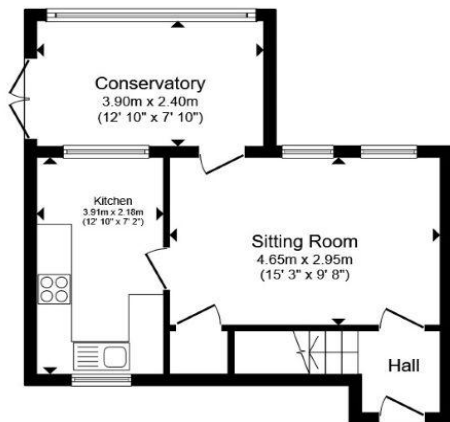
### **Parking**

There is a garage to the side of the property with a driveway in-front.

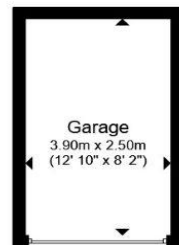
### **Agents Note**

The sale of this property is subject to receipt of Grant of Probate. Please obtain an update from the branch with regards to the potential timeframes involved.

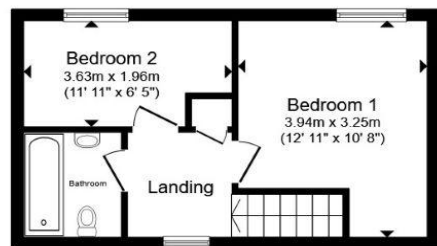




**Ground Floor**



**Garage**



**First Floor**

Total floor area 76.2 m<sup>2</sup> (820 sq.ft.) approx

This floor plan is for illustrative purposes only. It is not drawn to scale. Any measurements, floor areas (including any total floor area), openings and orientation are approximate. No details are guaranteed, they cannot be relied upon for any purpose and they do not form part of any agreement. No liability is taken for any error, omission or misstatement. A party must rely upon its own inspection(s). Powered by [www.propertybox.io](http://www.propertybox.io)

  
brown  
& merry





**welcome to**  
**Whitsun Pasture,**  
**Willen Park, Milton Keynes**

- Two-bedroom end-terraced home
- Sought-after Willen Park location
- Bright and well-proportioned living room
- Two good-sized bedrooms
- Private rear garden

Tenure: Freehold EPC Rating: Awaited  
Council Tax Band: B

fixed price

**£250,000**



**view this property online** [brownandmerry.co.uk/Property/NPL107929](https://www.brownandmerry.co.uk/Property/NPL107929)



Property Ref:  
NPL107929 - 0004

1. MONEY LAUNDERING REGULATIONS Intending purchasers will be asked to produce identification documentation at a later stage and we would ask for your co-operation in order that there is no delay in agreeing the sale. 2. These particulars do not constitute part or all of an offer or contract. 3. The measurements indicated are supplied for guidance only and as such must be considered incorrect. Potential buyers are advised to recheck measurements before committing to any expense. 4. We have not tested any apparatus, equipment, fixtures or services and it is in the buyers interest to check the working condition of any appliances. 5. Where an EPC, or a Home Report (Scotland only) is held for this property, it is available for inspection at the branch by appointment. If you require a printed version of a Home Report, you will need to pay a reasonable production charge reflecting printing and other costs. 6. We are not able to offer an opinion either written or verbal on the content of these reports and this must be obtained from your legal representative. 7. Whilst we take care in preparing these reports, a buyer should ensure that his/her legal representative confirms as soon as possible all matters relating to title including the extent and boundaries of the property and other important matters before exchange of contracts.

Brown & Merry is a trading name of Sequence (UK) Limited which is registered in England and Wales under company number 4268443, Registered Office is Cumbria House, 16-20 Hockliffe Street, Leighton Buzzard, Bedfordshire, LU7 1GN. VAT Registration Number is 500 2481 05.

brown & merry



**01908 611242**



[newportpagnell@brownandmerry.co.uk](mailto:newportpagnell@brownandmerry.co.uk)



74A High Street, Newport Pagnell, MILTON  
KEYNES, Buckinghamshire, MK16 8AQ



**[brownandmerry.co.uk](https://www.brownandmerry.co.uk)**