



4 Bedroom Riverside Townhouse Charter Quay, Kingston upon Thames £2,395,000 - Share of Freehold

A rare opportunity to acquire this absolutely stunning 4 bedroom Riverside Townhouse in Kingston upon Thames. This exceptional property, with accommodation with 4 floors of direct river views and offers 2,263 sq ft of internal living space, is immaculately presented to show home standard and is completely unique. Ideally situated within one of Kingston's most exclusive and desirable developments.

This wonderful property boasts a west facing aspect with 2 private terraces, which fronts directly onto the River Thames with panoramic views along the riverside and a double garage.

Forming part of the Charter Quay riverside development, with 24hr concierge service and a residents health suite.

Charter Quay is conveniently located adjacent to Kingston's Historic Market Place, Shopping Centre with High Street and Department Stores, including Fenwicks and John Lewis, plus independent boutique shops.

Fantastic transport links nearby including Kingston's Mainline Station is just a short walk away with frequent trains to London Waterloo

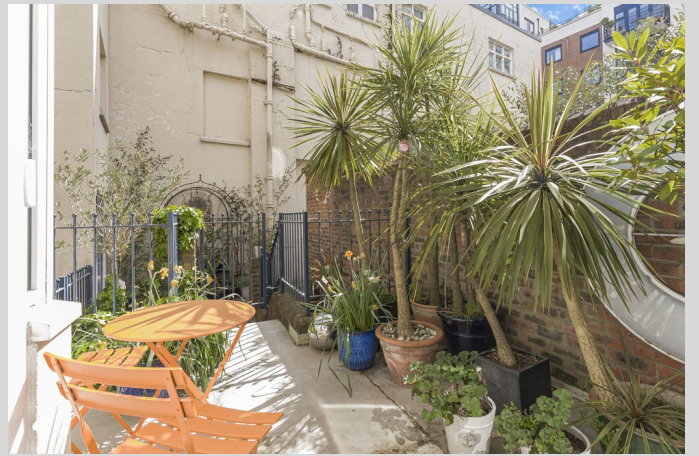
WWW.STACKANDBONNER.COM

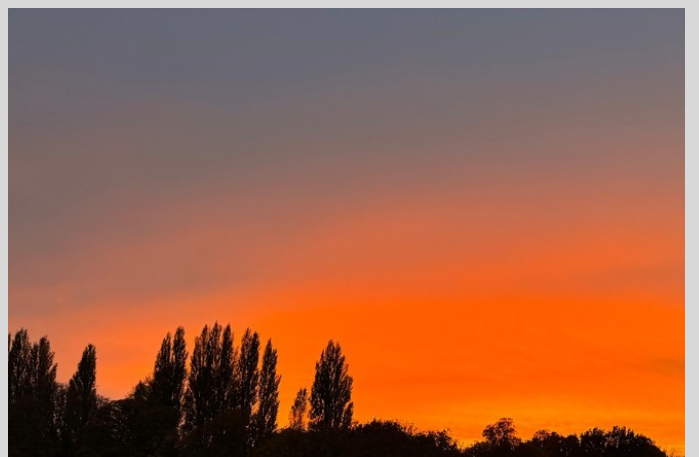
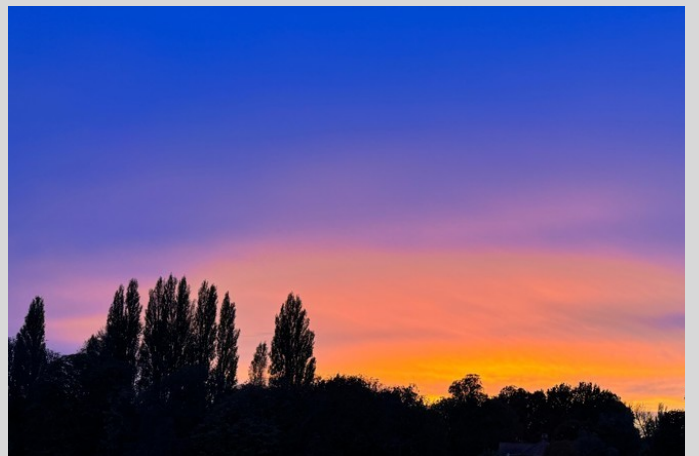
020 8974 8844

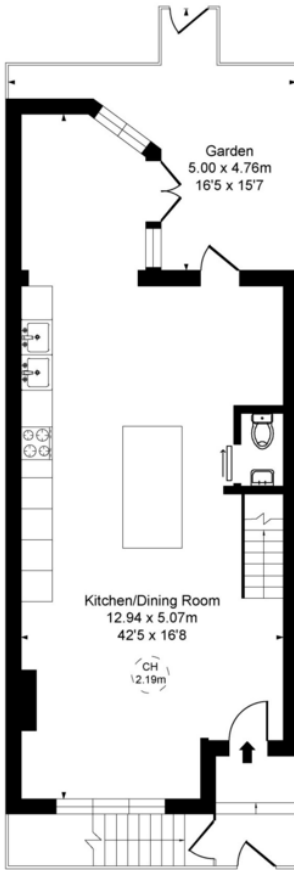
sales@stackandbonner.com



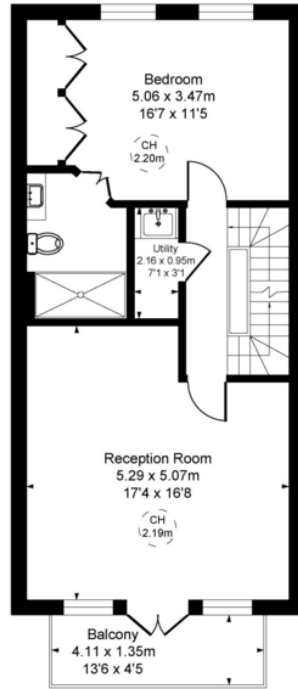




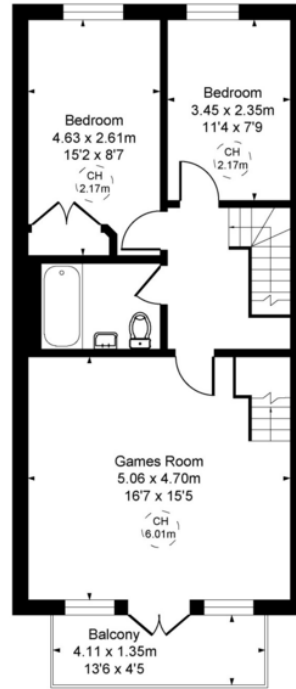




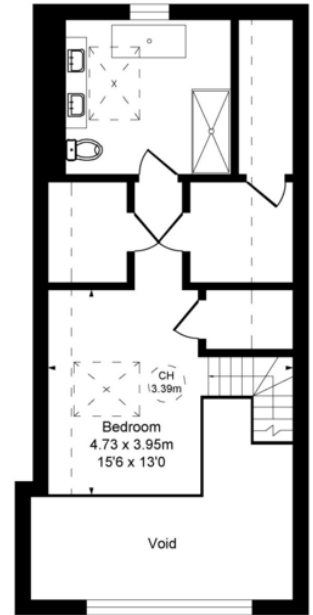
Ground Floor



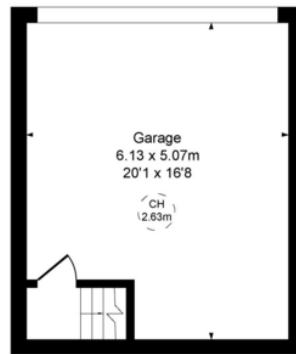
First Floor



Second Floor



Third Floor



Lower Ground Floor

**Quayside Walk, Charter Quay,
Kingston Upon Thames, KT1**

Approximate Gross Internal Area
238.95 sq m / 2572 sq ft
(Excluding Garage 210.20 sq m 2263 ft)
(Excluding Garage and restricted height
under 1.5m **202.39 sq m 2179 ft**)
Garage Area 28.74 sq m 309 ft
Restricted Height Area 7.81 sq m 84 ft
(CH = Ceiling Heights)

Whilst every attempt has been made to ensure the accuracy of the floor plan contained here, measurements of doors, windows, rooms and any other items are approximate and no responsibility is taken for any error, omission, or mis-statement. This plan is for illustrative purposes only and should be used as such by any prospective purchaser. The services, systems and appliances shown have not been tested and no guarantee as to their operability or efficiency can be given

QUAYSIDE WALK, CHARTER QUAY, KINGSTON UPON THAMES KT1 1HY

A rare opportunity to acquire this absolutely stunning 4 bedroom Riverside Townhouse.

This exceptional property, with accommodation with 4 floors of direct river views, is immaculately presented to show home standard and is completely unique.

Ideally situated within one of Kingston's most exclusive and desirable developments, Charter Quay, on the banks of the Thames

This wonderful property boasts a west facing aspect with 2 private terraces, which fronts directly onto the River Thames with panoramic views along the riverside.

Three spacious reception rooms, stunning kitchen/breakfast room, conservatory, principal bedroom suite, guest bedroom suite, two further double bedrooms and a family bathroom. utility room and cloakroom.
Secure underground double garage.

This property forms part of the Charter Quay riverside development with 24hr concierge service and residents' health suite.

Charter Quay is conveniently located adjacent to Kingston's Historic Market Place, and Shopping Centre with High Street and Department Stores including Fenwicks and John Lewis, plus independent boutique shops.
Fantastic transport links nearby including Kingston's Mainline Station which is just a short walk away with frequent trains to London Waterloo

- 4 Bedroom Riverside Townhouse
- 4 floors of direct river views
- 2,263 sq ft of internal living space
- Panoramic views over the River Thames
- 2 Private River Facing Terraces
- 3 Reception Rooms
- 3 Sumptuous Bathrooms
- Conservatory
- Utility Room
- Cloakroom
- Conservatory and Private Garden
- Double Garage
- Council Tax: Band H - £5,216.24 per annum
- Share of Freehold