



£220,000
Mansfield Lane
Nottingham, NG14 6NP

PROPERTY SUMMARY

Contemporary comfort meets village charm – a stylish family home in the heart of Calverton.

Beautifully presented throughout, this three-bedroom terraced home delivers a wonderful combination of style, comfort and functionality. The spacious accommodation has been designed to suit the demands of modern life, with versatile living areas, well-proportioned bedrooms and excellent parking facilities, making it an ideal choice for first-time buyers, growing families and investors alike. The current owners have invested in a number of significant improvements, including a full electrical rewire, replacement flooring throughout, a new garage door and a regularly serviced boiler, offering buyers additional peace of mind and a home that is ready to move straight into.

The ground floor welcomes you with a bright entrance hall leading to a contemporary fitted kitchen and a generous lounge/dining room, creating a sociable and flexible space that's perfect for both everyday living and entertaining.

To the first floor are three well-proportioned bedrooms, all served by a modern family bathroom, providing comfortable accommodation for a range of buyers.

Externally, the property benefits from a driveway and garage, providing convenient off-road parking and additional storage space.

3



1



1





ASHFORD
& MOULT
ESTATE AGENTS





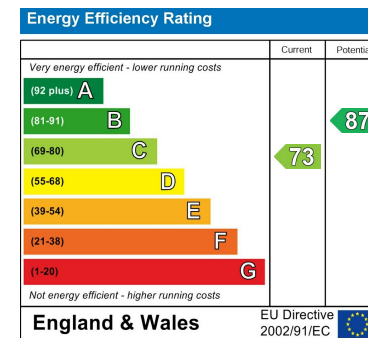
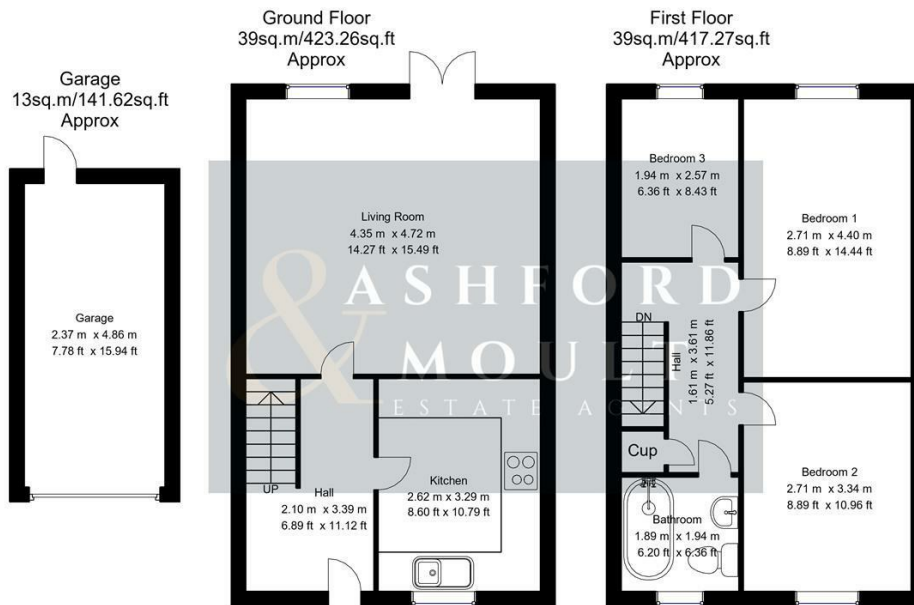
ASHFORD
MOULT
ESTATE AGENTS

LOCAL AUTHORITY
Gedling Borough Council

TENURE
Freehold

COUNCIL TAX BAND
A

VIEWINGS
By prior appointment only



Whilst every attempt has been made to ensure the accuracy of the floor plan contained here, no responsibility is taken for incorrect measurements of doors, windows, appliances and room or any error, omission or misstatement. Exterior and interior walls are drawn to scale based on interior measurements. Any figure given is for initial guidance only and should not be relied on as basis of valuation. These plans are for marketing purposes only and should be used as such by any prospective purchase. Specially no guarantee is should not be relied on as a basis of valuation. These plans are for marketing purposes only and should be used as such by any prospective purchase. Specially no guarantee is given on the total square footage of the property if quoted on this plan.
CC Ltd ©2018

Agents Note: Whilst every care has been taken to prepare these particulars, they are for guidance purposes only. All measurements are approximate and are for general guidance purposes only and whilst every care has been taken to ensure their accuracy, they should not be relied upon and potential buyers/tenants are advised to recheck the measurements



OFFICE ADDRESS

56 Main Street
Calverton
Nottinghamshire
NG14 6FN

OFFICE DETAILS

01158 656675
sales@ashfordandmoul.co.uk