



KIMBERLEY ROAD, SW9

£650,000

Victorian upper maisonette
Two en-suite bathrooms
Beautifully finished throughout
Share of freehold
Excellent transport links
Chain free

@marshandparsons
marshandparsons.co.uk

MARSH &
PARSONS



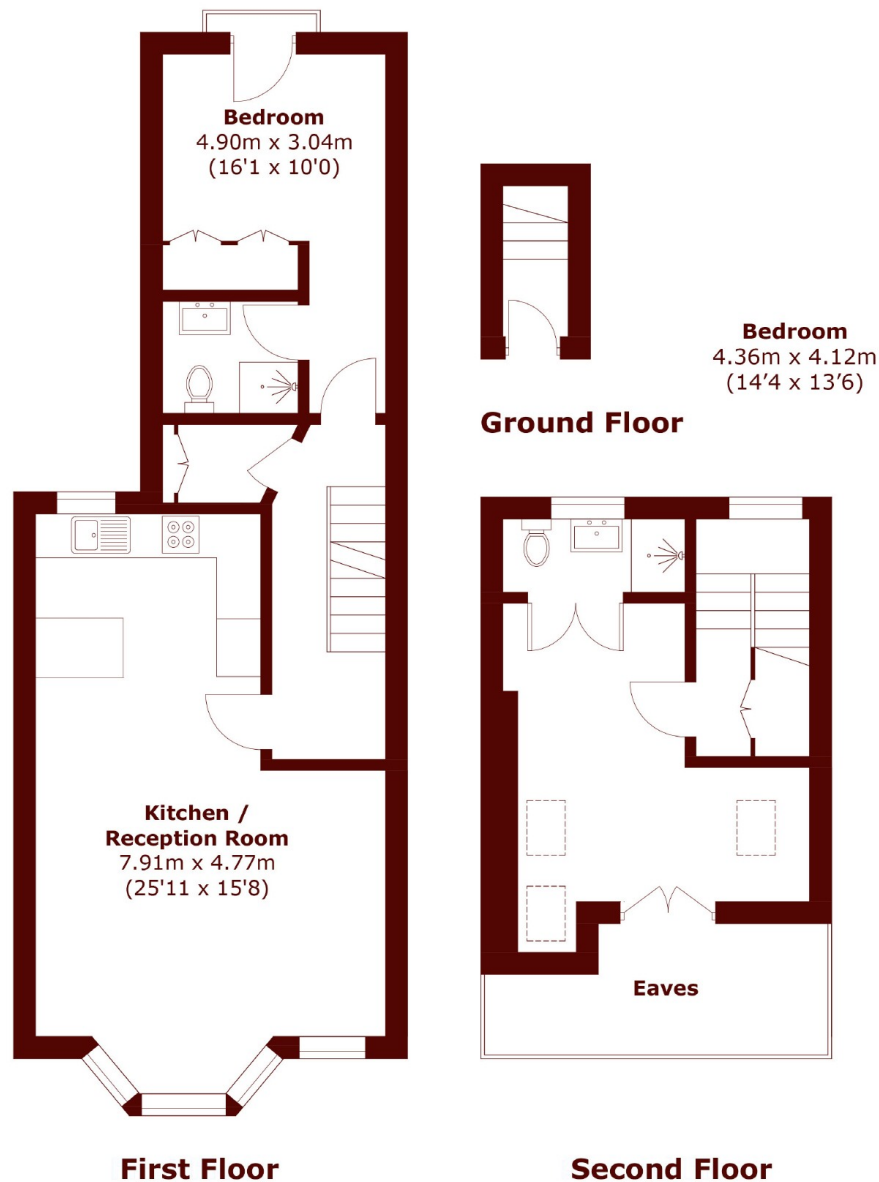
ABOUT THE PROPERTY

Beautifully presented Victorian upper maisonette offering over 850 sq ft, two double bedrooms, two bathrooms with a share of the freehold and is offered to the market chain free making it ideal for a quick sale.

This superb property has been modernised throughout and benefits from wooden floors and large sash windows, creating a wonderful sense of light and space. It is located on Kimberley Road, a popular residential street just a short walk from the vibrant amenities of Clapham High Street and Clapham Old Town, as well as the open spaces of Clapham Common. Excellent transport links are close by, including the Northern and Victoria Lines at Clapham North, Stockwell and Brixton, providing swift access to



STEP INSIDE KIMBERLEY ROAD



Total area (approx.): 79.2 sq. m (853.5 sq. ft)
(Excluding Eaves)

Clapham
020 7501 3666

Energy Rating: D We aim to make our particulars both accurate and reliable. However, they are not guaranteed; nor do they form part of an offer or contract. If you require clarification on any points then please contact us, especially if you're traveling some distance to view. Please note that appliances and heating systems have not been tested and therefore no warranties can be given as to their good working order

MARSH &
PARSONS