



73 Linden Road

Ashford, TN24 8BP

Price £225,000

A semi - detached bungalow in a popular residential position, offered for sale with no onward chain.

The property comprises an entrance hall, sitting room, kitchen, two bedrooms and modern shower room/WC. Local schools, shops and transport links are all easily accessible with Ashford mainline station is around half a mile distant.

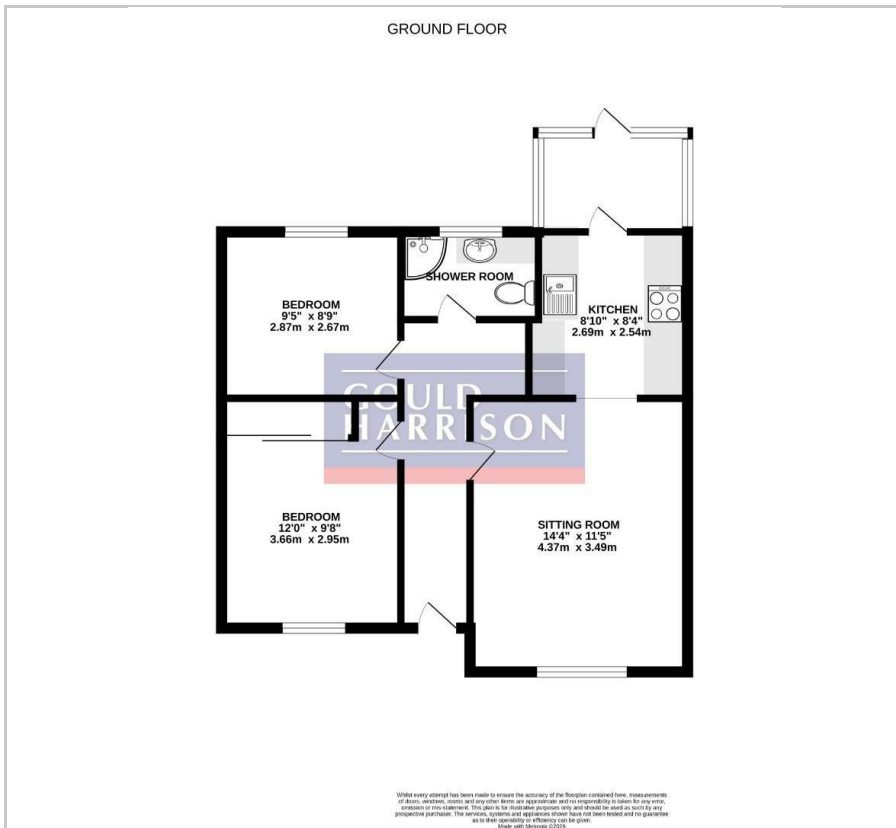
- SEMI DETACHED BUNGALOW
- TWO BEDROOMS
- ENCLOSED REAR GARDEN
- DOUBLE GLAZING
- GAS CENTRAL HEATING
- CLOSE TO LOCAL AMENITIES
- NO ONWARD CHAIN
- COUNCIL TAX BAND - C
- EPC RATING - D (59)

Viewing

Please contact our Ashford Office on 01233 646411 if you wish to arrange a viewing appointment for this property or require further information.



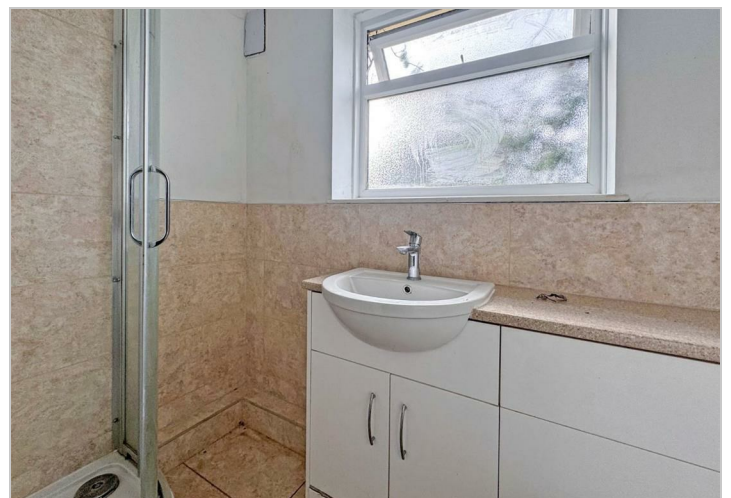
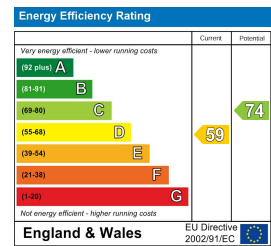
Floor Plan



Area Map



Energy Efficiency Graph



These particulars, whilst believed to be accurate are set out as a general outline only for guidance and do not constitute any part of an offer or contract. Intending purchasers should not rely on them as statements of representation of fact, but must satisfy themselves by inspection or otherwise as to their accuracy. No person in this firm's employment has the authority to make or give any representation or warranty in respect of the property.