



Matthew James

St James House | St James Road | Surbiton | Surrey KT6 4QH

T: +44 (0) 20 8390 2266

E: enquiries@matthewjamesestateagents.co.uk

www.matthewjamesestateagents.co.uk



## North Road, Surbiton, KT6 4DY

**TO LET**

A well presented one-bedroom first-floor conversion apartment set in a grand Victorian house located on a quiet road within the heart of Surbiton, a short walk from the mainline station and high street. The accommodation comprises; a large living room with high ceilings, bay window and sitting and dining space, modern open-plan kitchen with appliances, good size double bedroom again with high ceilings and fitted wardrobes and a modern white shower room. The property benefits from gas central heating, is offered unfurnished and available from mid July. Council Tax Band C

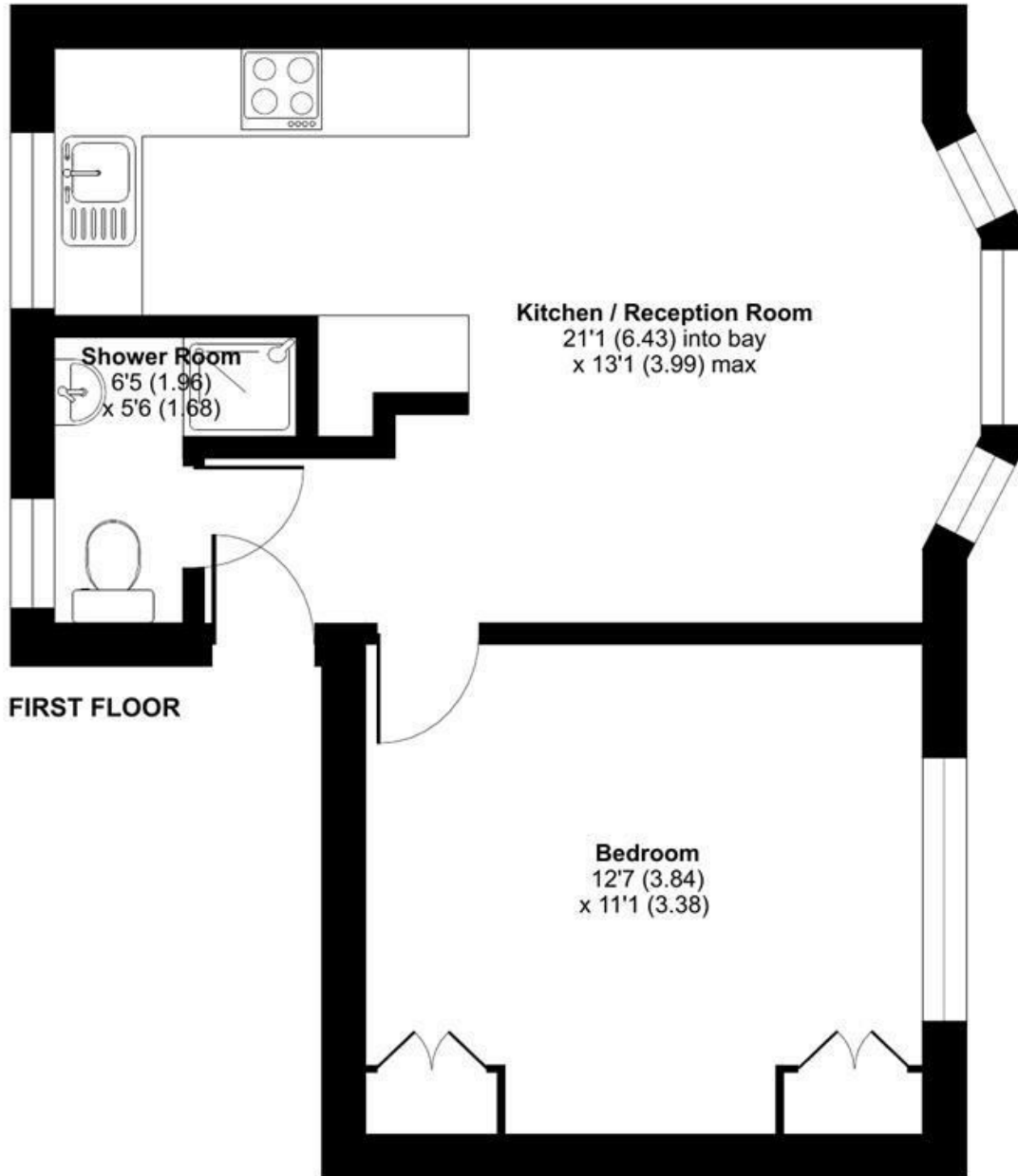
**£1,525 Per Month per calendar month (other fees may apply)**

**EPC Rating: C**

North Road, Surbiton, KT6

Approximate Area = 415 sq ft / 38.5 sq m

For identification only - Not to scale



Floor plan produced in accordance with RICS Property Measurement 2nd Edition, Incorporating International Property Measurement Standards (IPMS2 Residential). © nchecom 2025. Produced for Matthew James. REF: 1276606

These sales particulars have been prepared as a general guide only. We have not carried out a detailed survey, tested the services, appliances or specific fittings. Your solicitor must confirm lease or freehold details. Carpets, curtains, gas fires, electrical goods/fittings or other fixtures, unless expressly mentioned, are not included in the sale of this property. If there are any important matter which are likely to affect your decision to buy, please contact this office and we will be pleased to check the information for you before viewing the property. Before this property can be removed from the market, all offer; must be checked by our Financial Services Department. This is a service we offer on behalf of our clients. Please note that our room sizes are quoted in metres to the nearest tenth of a meter on a wall-to-wall basis. The imperial equivalent is only intended as an approximate guide for those not fully conversant with the metric measurements. All measurements have been taken using a sonic tape measure and therefore may be subject to a small margin of error.

Energy Efficiency Rating		Current	Potential
Very energy efficient - lower running costs			
(92 plus) <b>A</b>			
(81-91) <b>B</b>			
(69-80) <b>C</b>			
(55-68) <b>D</b>			
(39-54) <b>E</b>			
(21-38) <b>F</b>			
(1-20) <b>G</b>			
Not energy efficient - higher running costs			
<b>England &amp; Wales</b>		70	79
	EU Directive 2002/91/EC		

Environmental Impact (CO <sub>2</sub> ) Rating		Current	Potential
Very environmentally friendly - lower CO <sub>2</sub> emissions			
(92 plus) <b>A</b>			
(81-91) <b>B</b>			
(69-80) <b>C</b>			
(55-68) <b>D</b>			
(39-54) <b>E</b>			
(21-38) <b>F</b>			
(1-20) <b>G</b>			
Not environmentally friendly - higher CO <sub>2</sub> emissions			
<b>England &amp; Wales</b>			
	EU Directive 2002/91/EC		