



1 Selman Close Hythe, SO45 6JS

- NO FORWARD CHAIN
- ONE BATHROOM, WC & EN-SUITE
- WALK TO HYTHE VILLAGE CENTRE
- BALCONY + JULIETTE WITH SEA VIEWS
- SOUGHT AFTER AREA
- FIVE SPACIOUS BEDROOMS
- TWO ALLOCATED PARKING SPACES
- END TERRACE HOME
- CLOSE TO NEW FOREST NATIONAL PARK
- SIZEABLE LIVING ROOM

£449,000 Freehold Freehold





Location

Kitchen

This kitchen has plenty of cupboard space, perfect to store all your utensils. There is ample work top space to fit all kitchen appliances. The room also has space to comfortably fit a dining table with chairs.

Living Room

The living room is situated on the second floor and has lots of space to fit all your furniture. It has one big window looking out onto the front of the property and has clear views of Southampton water.

Bathroom

This family bathroom has lots of storage space and is fitted with a toilet, sink and bath.

WC

4' 8" x 4' 7"

This convenient WC is fitted with a sink and a toilet.

En suite

This en-suite within the master bedroom, is fitted with a sink, toilet and shower.

Master Bedroom

This bedroom has lots of storage space and comes with a built-in wardrobe and en-suite. It has beautiful views of Southampton Water from the window and from the balcony.

Bedroom 2

This bedroom comes with lots of space and a built-in wardrobe, perfect to store all your clothing. It has one big window that looks out into the rear of the property and lets lots of natural light fill the room.

Bedroom 3

This bedroom has plenty of space for furniture and has access to its own balcony, which runs the length of the house.



Bedroom 4

This bedroom is the smallest however, it still has plenty of space. It has one window that allows lots of light in, making the room feel bright and airy.

Bedroom 5

This bedroom is on the ground floor and has lots of room for furniture. It has one window which looks out onto the front of the property.



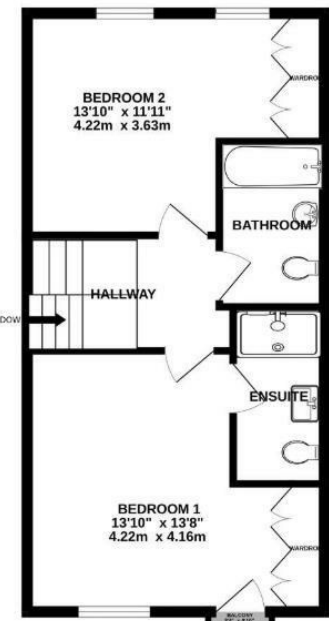
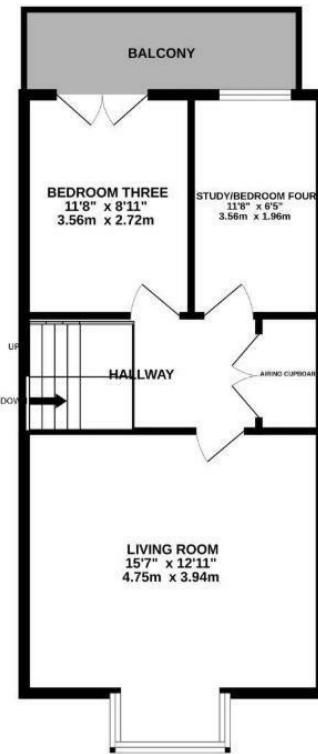
Local Authority **NFDC**
 Council Tax Band **E**
 EPC Rating **C**



GROUND FLOOR

1ST FLOOR

2ND FLOOR



Whilst every attempt has been made to ensure the accuracy of the floorplan contained here, measurements of doors, windows, rooms and any other items are approximate and no responsibility is taken for any error, omission or mis-statement. This plan is for illustrative purposes only and should be used as such by any prospective purchaser. The services, systems and appliances shown have not been tested and no guarantee as to their operability or efficiency can be given.
 Made with Metropix ©2025

Citrine Estates Office

7 High Street, Hythe, Southampton,
 SO45 6AG

Contact

023 81980 023
christina@citrine-estates.co.uk
www.citrine-estates.co.uk

Agents Note: Whilst every care has been taken to prepare these particulars, they are for guidance purposes only. All measurements are approximate and for general guidance purposes only and whilst every care has been taken to ensure accuracy, they should not be relied upon and potential buyers/tenants are advised to recheck the measurements.