



## Charles Clowes Walk, SW11

£3,950 Per calendar month

Two bedroom luxury apartment available in the highly sought after development 'The Residence'. The property includes a large open plan kitchen/ reception room with it's own private balcony. Residents also benefit from facilities including; gym, yoga room, media lounge and a private courtyard.

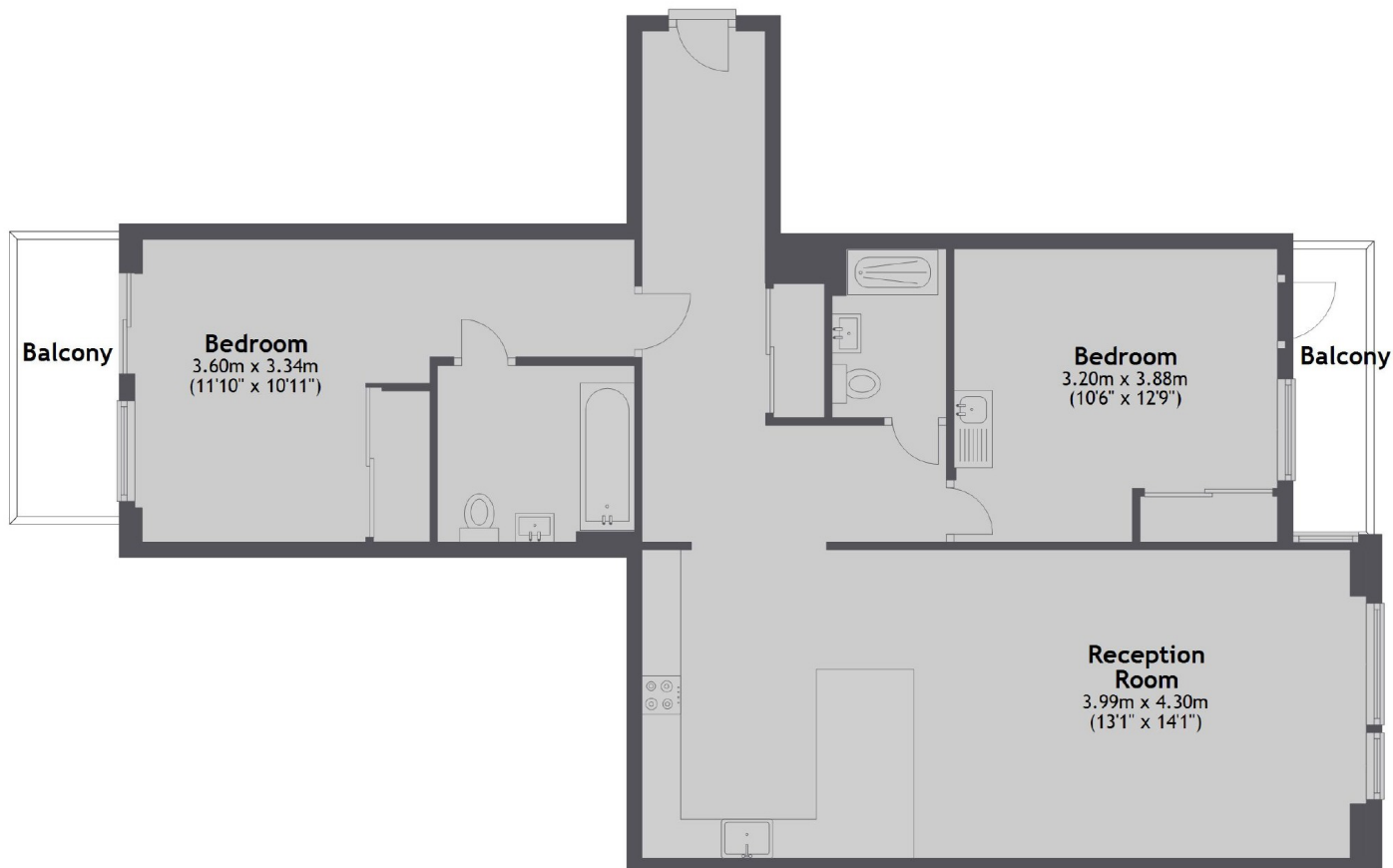
Located perfectly by Elephant and Castle station, providing easy access via the Northern and Bakerloo line to and from the City.

### Features

- Two Bedroom Apartment
- Two Bathrooms
- 24/7 Concierge
- Great Location
- Residents Gym
- Views Over The Gardens

# Charles Clowes Walk, London, SW11

## First Floor



Total area: approx. 81.9 sq. metres (881.1 sq. feet)