



The Village Shop, Post Office & Clematis Cottage

School Lane, Baslow
Derbyshire, DE45 1RZ



The Village Shop, Post Office & Clematis Cottage, Baslow

Occupying a central position in the old part of the highly sought after village of Baslow, this is a rare opportunity to acquire the local village shop and post office together with a charming two bedroom character stone cottage, currently operated as a successful holiday let.

Baslow is one of the Peak District's most desirable and picturesque villages, attracting visitors throughout the year with its beautiful surroundings, thriving community and close proximity to Chatsworth House and the surrounding countryside.



KEY FEATURES

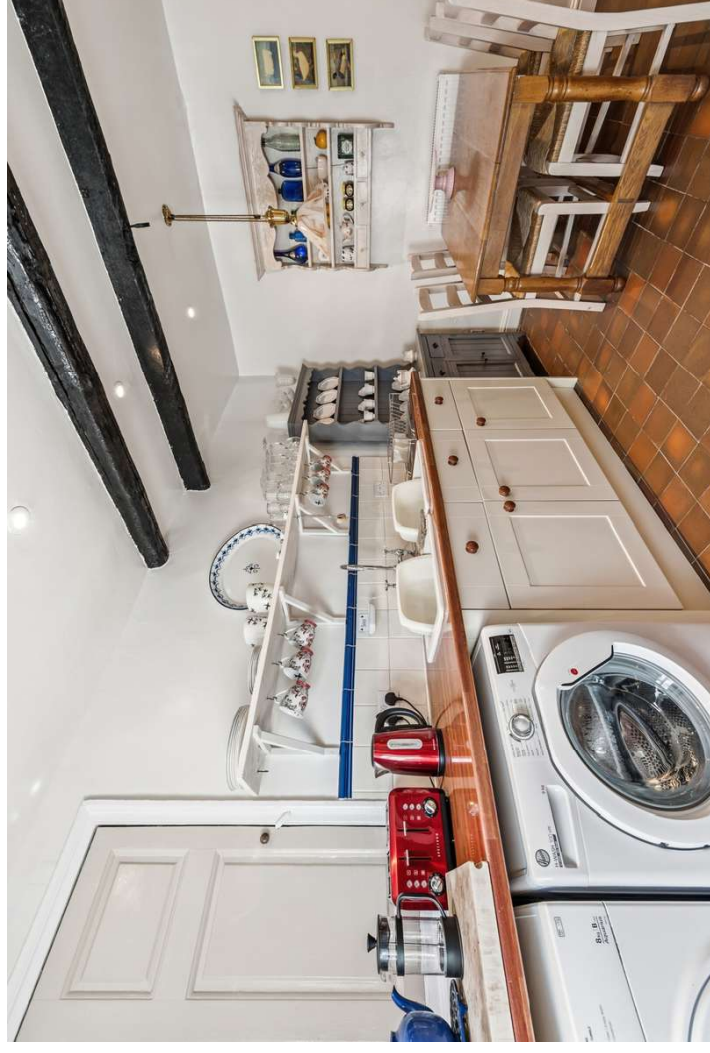
- Turnkey Business Opportunity
- Two Double Bedroom Character Cottage
- Fixtures Fittings & Stock Included
- Centrally Positioned In A Highly Sought After Peak District Village
- Picturesque Setting With Attractive Views
- On The Edge Of The Chatsworth Country Estate
- Direct Access To A Wealth Of Outdoor Pursuits
- No Upward Chain



CLEMATIS COTTAGE

GROUND FLOOR

The adjoining pretty stone cottage is full of charm and character and provides well presented accommodation comprising on the ground floor a delightful sitting room and a breakfast kitchen.









CLEMATIS COTTAGE

FIRST FLOOR

First floor accommodation comprising two double bedrooms and a bathroom









THE VILLAGE SHOP & POST OFFICE

The property presents an exciting proposition for purchasers wishing to continue the business of this long established and well regarded village enterprise which enjoys excellent local support together with a strong visitor trade.

The sale includes the fittings, fixtures, stock and goodwill of the existing business, offering an excellent turnkey opportunity with an established reputation already in place.





Fresh bread
supplied by



thebakewellbakery.co.uk

ICE CREAM
SOLD HERE

UPTON FAMILY
LOW VILLAGE
SHOP
1746 808

WINES & SPIRITS



Put Other always check the...

IT IS ILLEGAL TO
SELL TOBACCO
PRODUCTS TO
ANYONE UNDER
THE AGE OF 18





NEWSPAPERS & MAGAZINES

LED FOODS



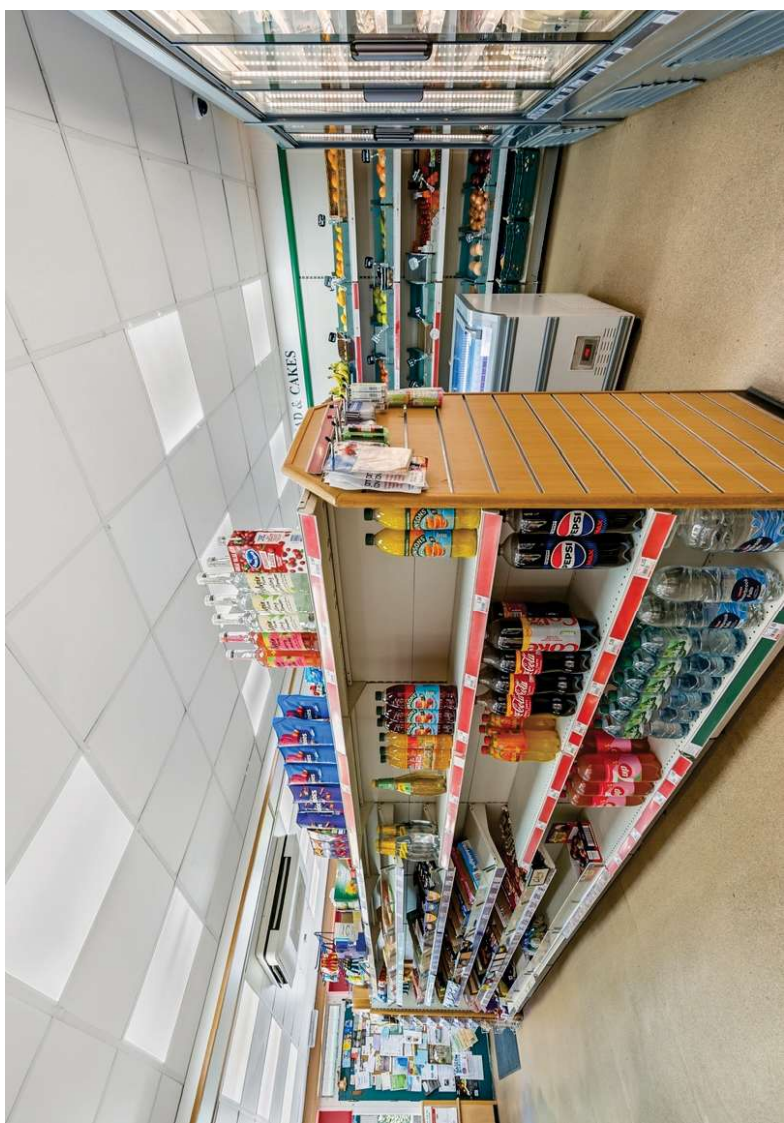


POST OFFICE

available here

INSIDE

Various notices and advertisements posted on a bulletin board.



EXTERIOR

Outside there is a small seating terrace, ideal for enjoying the attractive village surroundings.

The cottage is currently run as a successful holiday let, providing an additional income stream and enhancing the overall appeal of this unique lifestyle and business opportunity.







POST OFFICE

Village Shop & Post Office
We're open 7 days a week
Monday - Saturday 9am - 5pm
Sunday 10am - 4pm
Christmas Day & Bank Holiday
We have a range of services to help you
with your shopping
We have a range of services to help you
with your shopping
We have a range of services to help you
with your shopping

POST OFFICE
The Village Shop & Post Office

BASLOW VILLAGE
SPAR SHOP
OWNED & RUN BY THE
UPTON FAMILY
TEL. 01246
582108

Fresh bread
supplied by

Worrell
BAKERY
ORIGINS IN
WALLEY

OPEN

The Rabbit Fairy
Worrell Bakery
WALLEY



Baslow Post Office & Clematis Cottage

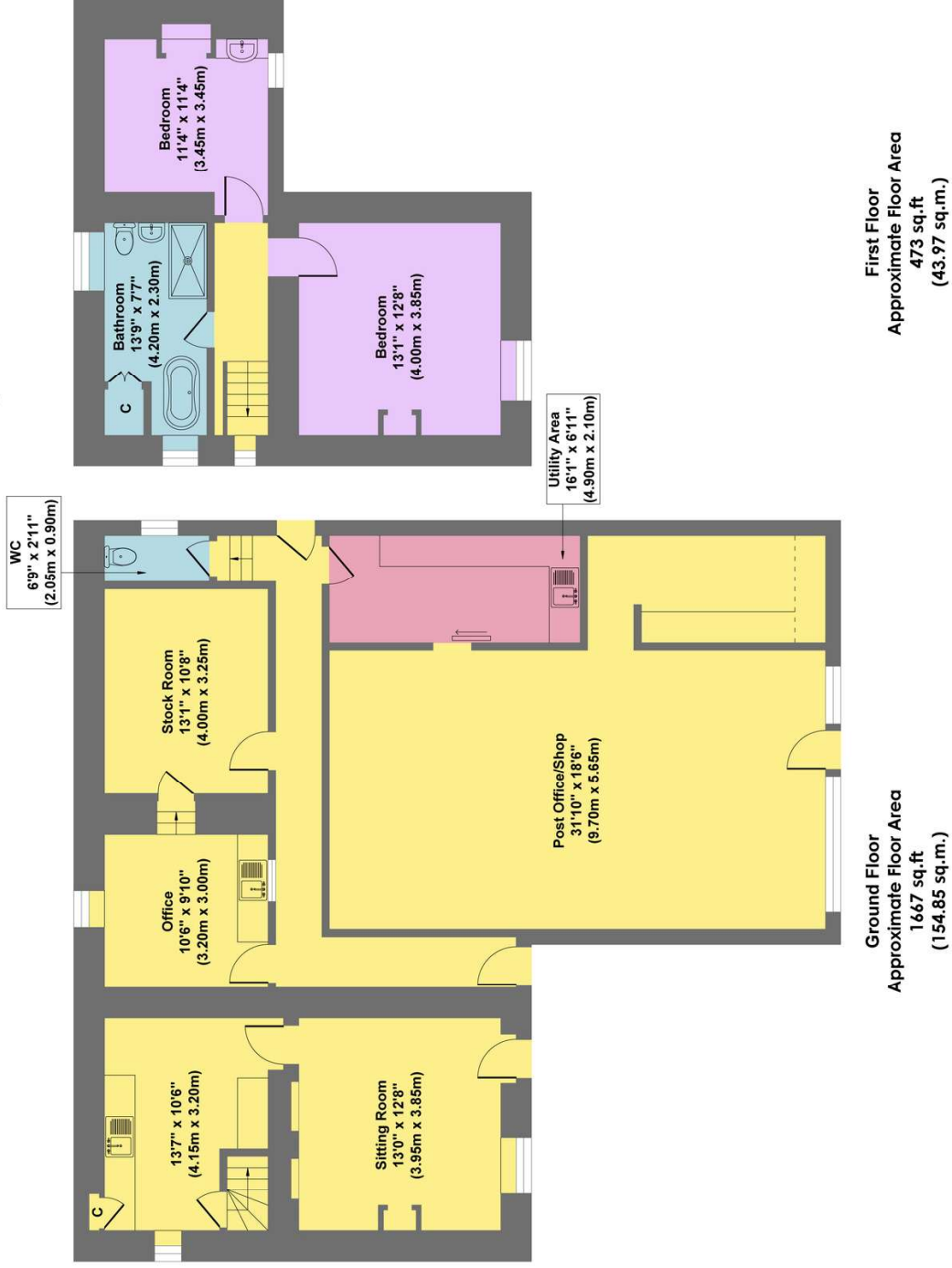


Illustration for identification purposes only. Measurements are approximate, not to scale



For further information
please telephone our Bakewell
office on: 01629 815307

or email Liz Agar on
liz.agar@saxtonmee.co.uk

While we endeavour to make our sales particulars fair, accurate and reliable, they are only a general guide to the property and, accordingly, if there is any point, which is of particular importance to you, please contact the relevant office. SERVICES: The Agents have not tested any apparatus, equipment, fittings or services and so cannot verify they are in working order. The buyer is advised to obtain verification. MEASUREMENTS: Please note all the measurement details are approximate and should not be relied upon as exact. FLOORPLANS; Plans are for guidance purposes only and under no circumstances should they be relied upon for use in planning carpets and other such fixtures, fittings or furnishings.