



Samuelson Place, TW7

£269,950

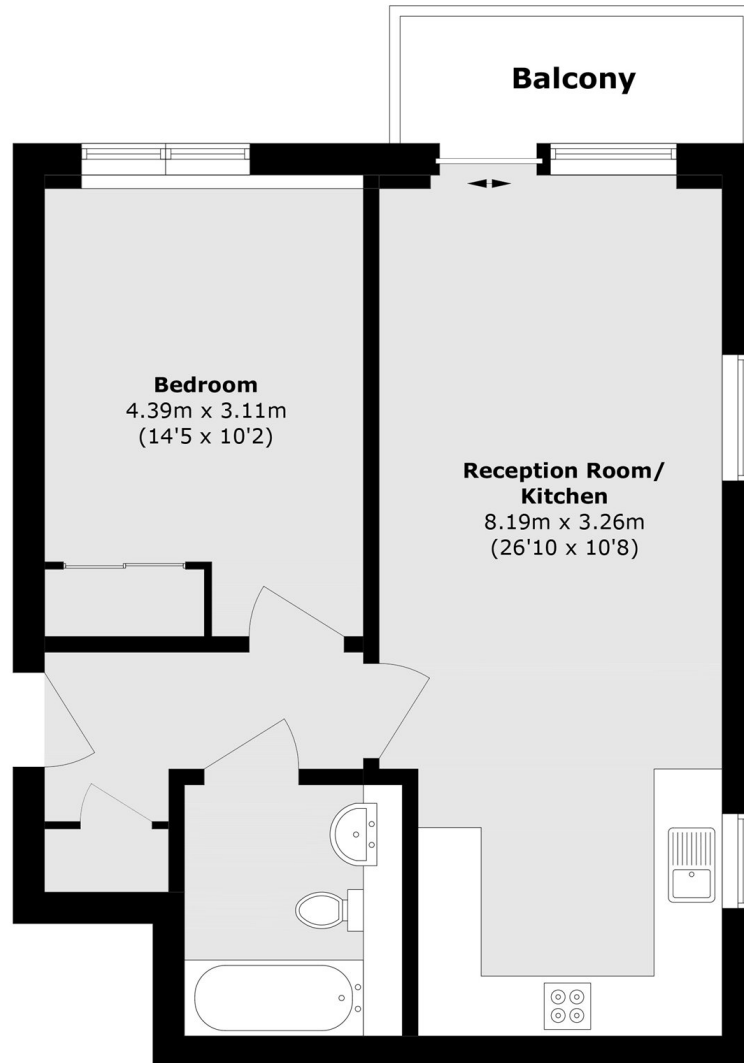
A simply beautiful one double bedroom second floor apartment with stunning views. The property is beautifully presented throughout and benefits from open plan living, a private balcony, ample storage and communal lift service. Ideal for first time buyers and investors alike.

Located in a modern development within a short walk of Thornbury Park and Isleworth train station. London Road offers a large selection of shops, restaurants and local amenities with easy access to the A4/M4 providing excellent routes into and out of the city centre.

Features

- Second Floor Apartment
- One Double Bedroom
- Private Balcony
- Lift Service
- Long Lease
- Close To Amenities

Samuelson Place, Isleworth, TW7



Total area (approx.): 50.9 sq. m (547.8 sq. ft)

Balcony area (approx.): 3.9 sq. m (41.9 sq. ft)