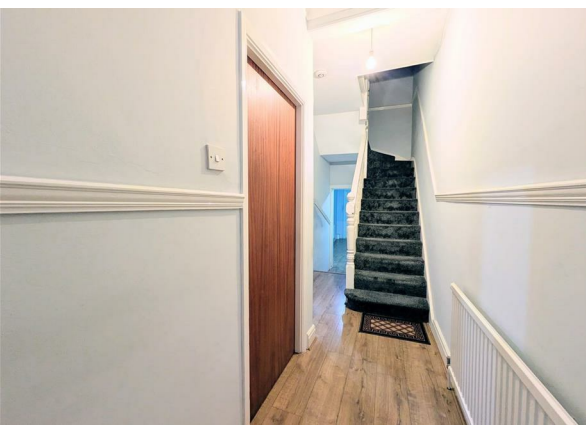
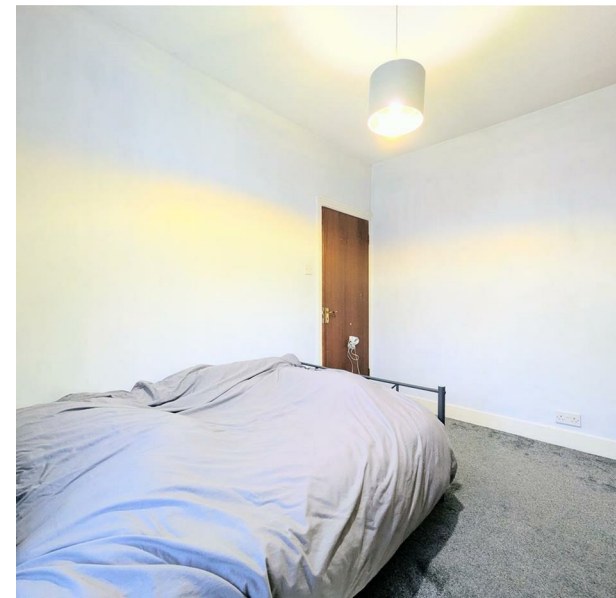


Alexandra Road, London, NW4 2SA

£2,350 Per Month

Council Tax Band: E



A well-presented three-bedroom terrace house located in the sought-after NW4 area, offering versatile living space and excellent access to local amenities, schools, and transport links.

- \*\*Key Features\*\***
- Two reception rooms providing flexible living and entertaining space
  - Fitted kitchen with microwave, gas cooker, washing machine, and fridge
  - Downstairs bathroom plus an additional room ideal as a dining room or study
  - Upstairs layout includes:
    - A large double bedroom (currently open-plan, but can be reinstated into two separate rooms if required)
    - A second double bedroom
    - A family bathroom
  - Traditional fitted wardrobes throughout, offering ample storage
  - Small, well-maintained garden (outhouse not included)
  - Off-street free parking available

- \*\*Location Highlights\*\***
- Close to highly regarded schools:
    - Primary: Independent Jewish Day School and Hasmonean Primary School
    - Secondary: Hendon School and Hasmonean High School for Boys
  - Excellent public transport connections and a range of local shops, cafes, and amenities nearby

- \*\*Availability\*\***
- from 20th Dec



Open House Wembley

