



Corson House, City Island Way, London, E14

£650,000

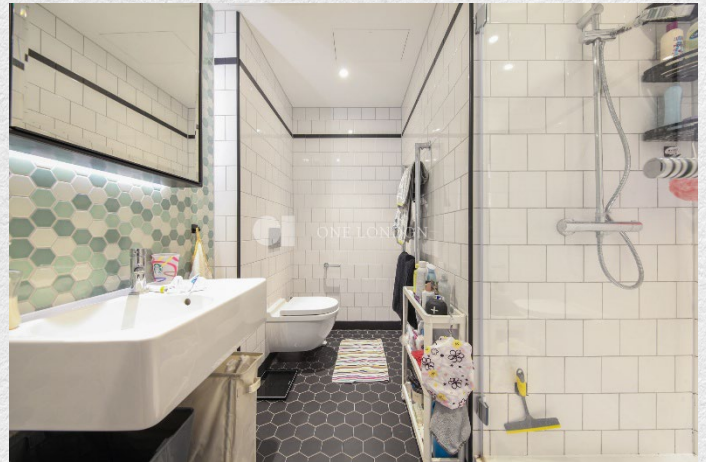
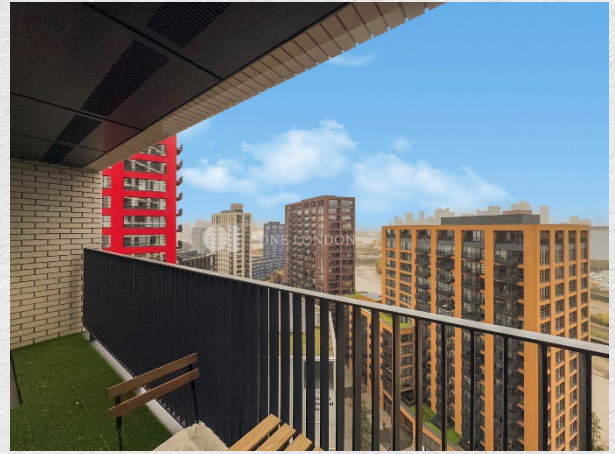
This stylish two-bedroom apartment with a private balcony is located on the 16th floor of Corson House, part of the highly sought-after London City Island development.

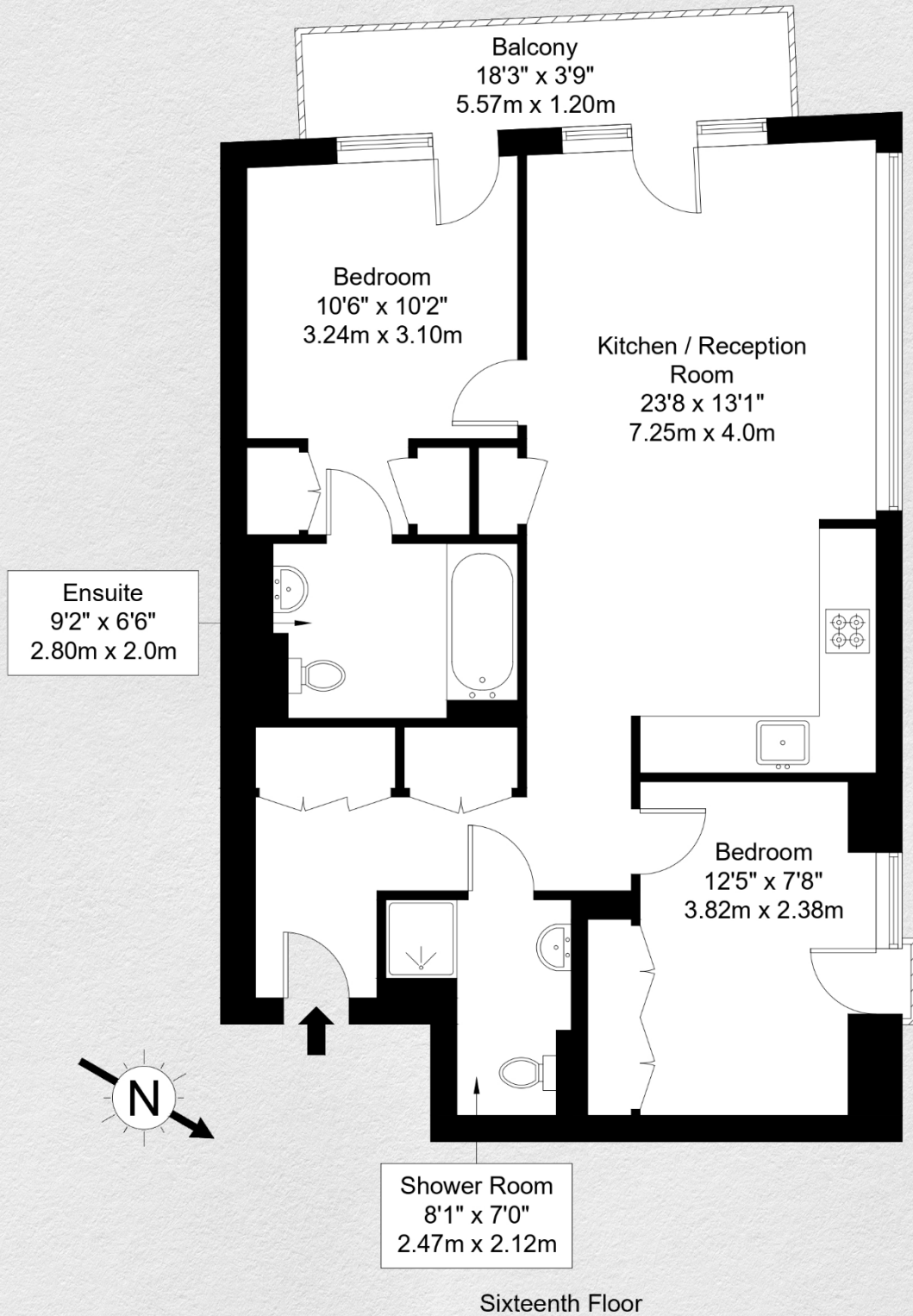
- 16th floor apartment
- Two bedrooms
- Two bathrooms
- 813 sq.ft internal
- Private balcony
- 24 hr concierge
- Gym, Spa & Outdoor pool
- Residents' cinema
- Great transport links

Encompassing a healthy c.813 sq ft, the property comprises a private balcony, an open plan living space featuring a bespoke fitted kitchen with integrated appliances, and an island unit housing the ceramic hob, the full-height windows ensure natural light. The property is designed to a high specification with the open plan kitchen combining bespoke shelves and high-spec European brand appliances.

Both bedrooms are generously sized doubles, with the principal bedroom benefiting from an en suite bathroom. A separate family bathroom and additional hallway storage add to the property's practicality.

All of the Islands residents are members of the exclusive City Island Social club, with membership comes access to a range of stylishly designed private facilities. These include a clubhouse, concierge, a grocer's shop, gymnasium, spa & treatment rooms, a screening room, pools and gardens.





Address:

Corson House, City Island Way, London, E14

sq ft

bed

bath

internal

813

2

2

*** For illustration purposes only. Could not be to scale. One-London aims to ensure accuracy but is not liable for any discrepancies.*