



W WESTWOODLEBER

**W WESTWOODLEBER**  
LET US GUIDE YOU HOME

Sele Mill, North Road, Hertford, SG14 1LD  
£329,995



## Sele Mill, North Road, Hertford, SG14 1LD

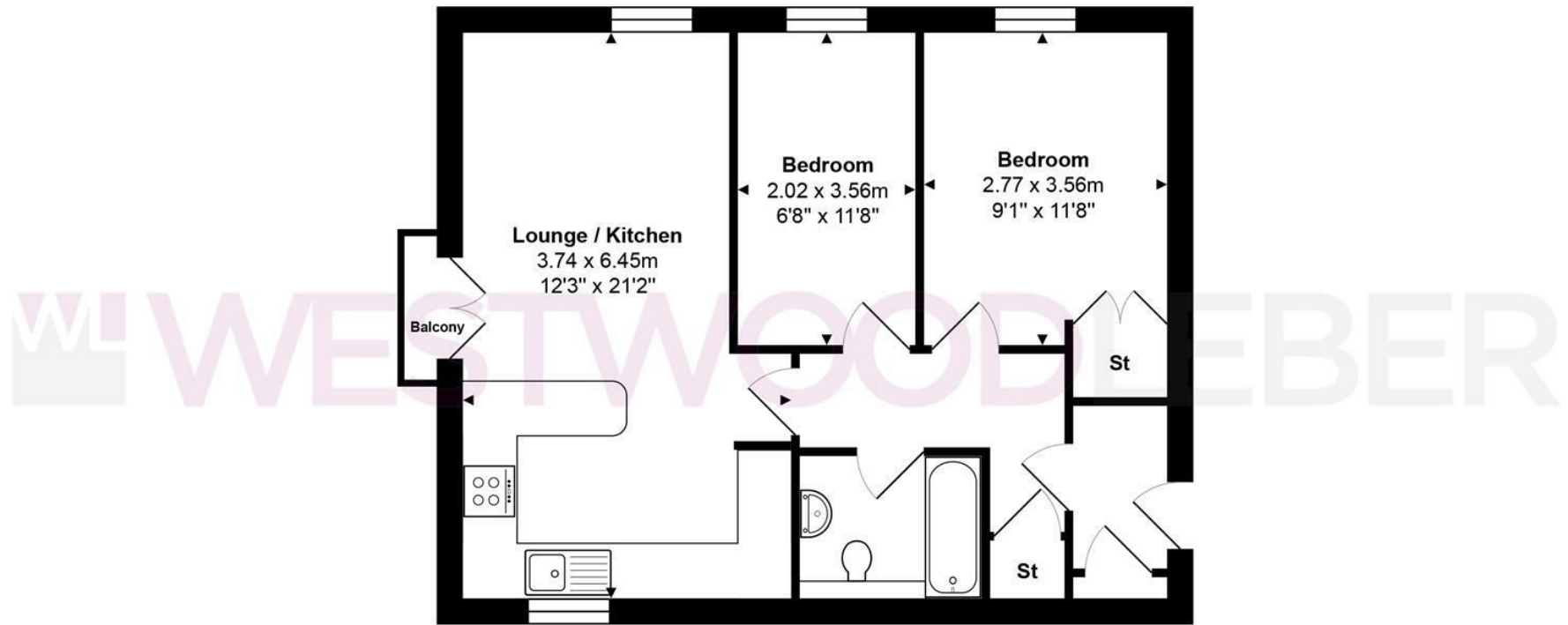
Westwood Leber are delighted to present this rarely available and larger-than-average two bedroom, top-floor apartment, set within a secure gated development forming part of a charming Grade II listed building, perfectly positioned just a stone's throw from Hertford town centre and Hertford North railway station.

Tastefully updated by the current owners, the property offers bright and spacious accommodation throughout, highlighted by an impressive triple-aspect open-plan kitchen / living room that enjoys an abundance of natural light and elevated views. The apartment further benefits from two well-proportioned bedrooms, including fitted wardrobes to the principal bedroom, and a contemporary family bathroom.

Additional features include allocated parking, ample visitor parking, private access to useful loft storage, and beautifully maintained communal gardens, all contributing to a convenient and low-maintenance lifestyle. With a good length lease and excellent transport links within walking distance, this property is ideally suited to a professional buyer, downsizer, or investor seeking a quality home in one of Hertford's most desirable locations.



**W** WESTWOODLEBER



Total Area: approx. 51.8 m<sup>2</sup> ... 557 ft<sup>2</sup> (excluding balcony)

THE FLOORPLAN IS FOR ILLUSTRATIVE PURPOSES ONLY AND IS NOT TO SCALE.

Measurements and features are approximate and may differ from the actual property. Verify all details independently; no liability is accepted for errors or omissions.

Property marketing provided by [www.fotomarketing.co.uk](http://www.fotomarketing.co.uk)







WESTWOODLEBER



WESTWOODLEBER



WESTWOODLEBER



WESTWOODLEBER