



Rookwood Way, London E3
£800,000 Leasehold







Description

Situated in the heart of one of East London's most dynamic creative hubs, this exceptional three-bedroom apartment is located within the coveted Fish Island Village development. The property combines contemporary design with a unique waterside setting, offering an unparalleled living experience right on the banks of the Hertford Union Canal.

Inside, the apartment is defined by its generous proportions and abundant natural light, enhanced by a dual-aspect open-plan living area. The state-of-the-art kitchen is fully integrated, creating a seamless space perfect for entertaining. From here, doors open onto a private balcony, providing breathtaking and direct views over the tranquil canal waters. The home features three well-appointed bedrooms, including a master with its own ensuite, alongside a modern family bathroom and excellent built-in storage solutions.

Residents of Fish Island Village benefit from exclusive access to a suite of premium amenities. A dedicated concierge service ensures convenience and security, while a private residents' gym provides a fantastic space for health and wellness. This particular apartment also includes the significant advantage of a secure underground parking space.

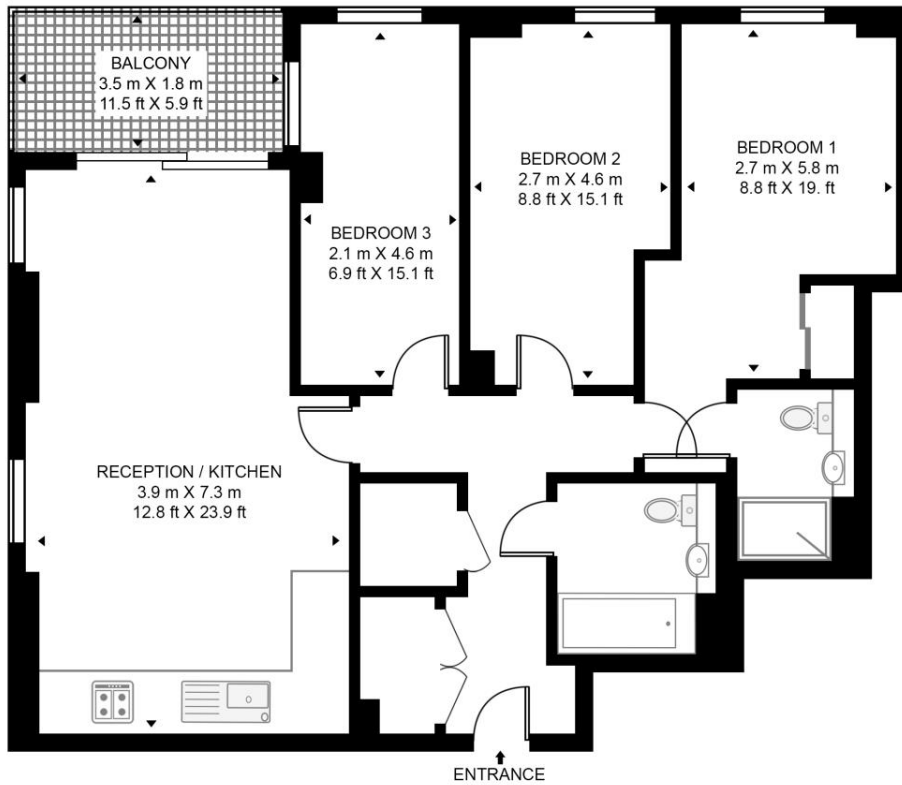
- Three-bedroom apartment
- Two bathrooms (one en-suite)
- North-west facing balcony
- Panoramic canal views
- Gated underground parking
- 24-hour concierge service
- Residents' gym
- Lift access
- 916 sq. ft living space
- Prime Hackney Wick location

Floorplan

915 sq ft | 85 sq m

MURDOCH COURT

APPROXIMATE GROSS INTERNAL FLOOR AREA 916 SQ.FT (85.1 SQ.M)



THIRD FLOOR



HDVA

This floor plan has been defined by the RICS Code of Measurement. This floor plan and all others are for approximate representative purposes only and upon usage is agreed to as such by the client.

WWW: hdvirtualart.com | TEL: 0203.974.1567 | EMAIL: info@hdvirtualart.com

Stratford
5 Station Street,
London E15 1DA
+4420 3147 1500
Lettingsstratford@eu.jll.com

Urban living, your way.

jll.co.uk/residential

© 2019 Jones Lang LaSalle IP, Inc. All rights reserved. All information contained herein is from sources deemed reliable; however, no representation or warranty is made to the accuracy thereof.

