



Orchid Fare, Highfields Caldecote Cambridge  
**£475,000** Freehold

**Sharman  
Quinney**

# Key Features



- No Onward Chain
- Well Presented Throughout
- Detached Home
- Five Bedrooms
- Comberton Catchment
- Open Plan Kitchen/Dining/Family Space
- Garage & Driveway
- Quiet Cul-De-Sac Location

OPEN HOUSE BY APPOINTMENT ONLY: Saturday  
16th May 10:00 - 12:00

Nestled at the end of a peaceful cul-de-sac in the highly desirable Highfields Caldecote area of Cambridge, this superbly presented five-bedroom detached home offers generous, versatile living space and modern family comfort throughout.

The property benefits from no onward chain, making it ideally suited for buyers seeking a smooth and timely move.



Inside, the accommodation is beautifully proportioned, featuring a welcoming hallway, a cosy living room and an extended contemporary open-plan kitchen/dining/family area offering lots of natural lighting, a log burner and is perfect for daily living and entertaining alike.

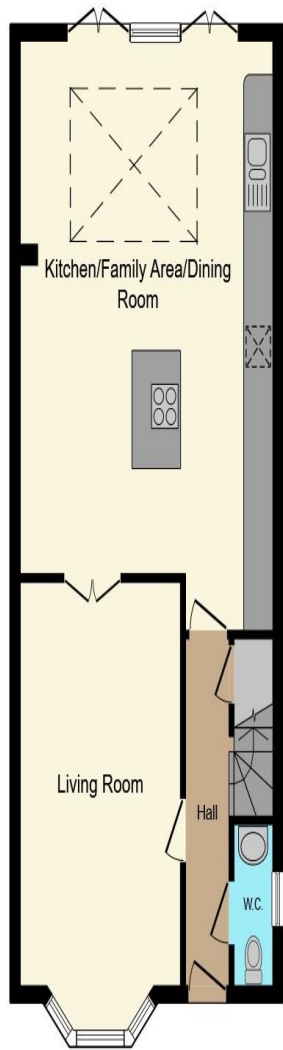
Upstairs, you'll find five well-appointed bedrooms, including two with en-suite facilities, alongside an attractive family bathroom space, providing flexibility for children, guests or a home office.

Externally, the property boasts a low-maintenance rear garden with porcelain paving, artificial turf and a hot tub - ideal for outdoor living. A garage and driveway complete the offering, delivering convenient off-street parking.

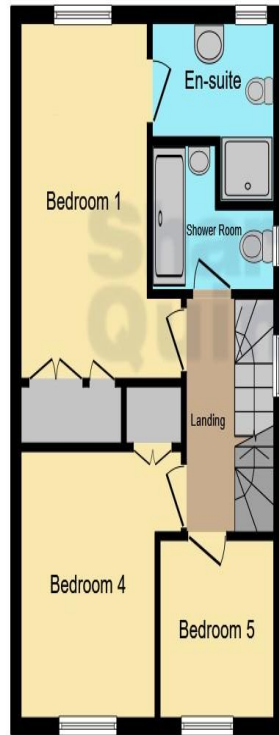
Positioned in a peaceful residential setting yet within easy reach of local amenities, schools and transport links, this home is a wonderful opportunity for growing families seeking space, style and convenience. Early viewing is highly recommended to fully appreciate all that this property has to offer.

Surrounded by open countryside Highfields Caldecote is situated about 5 miles west of Cambridge. There is a primary school, a variety of football and cricket teams for all ages. There is also a hairdressers and a petrol station with shop on the edge of the village. Highfields Caldecote also sits in the catchment for the sought after

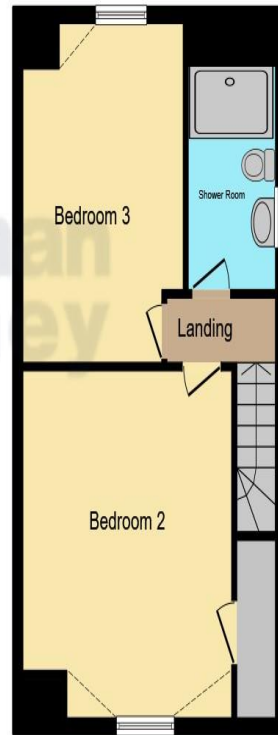




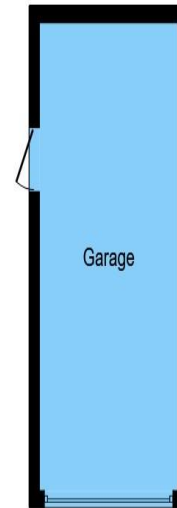
**Ground Floor**



**First Floor**



**Second Floor**



**Garage**

Comberton Village College. The nearest supermarket, dentist and takeaways can be found in nearby Cambourne. Doctor surgeries are available at Comberton and Bourn (either are able to be registered with).

This floor plan is for illustrative purposes only. It is not drawn to scale. Any measurements, floor areas (including any total floor area), openings and orientation are approximate. No details are guaranteed, they cannot be relied upon for any purpose and they do not form part of any agreement. No liability is taken for any error, omission or misstatement. A party must rely upon its own inspection(s). Powered by [www.focalagent.com](http://www.focalagent.com)

To view this property call Sharman Quinney on:  
**01954 710620**

# Selling your property?

Contact us to arrange a **FREE** home valuation.

 01954 710620

 13 High Street, Cambourne, CAMBRIDGE,  
Cambridgeshire, CB23 6JX

 [cambourne@sharmanquinney.co.uk](mailto:cambourne@sharmanquinney.co.uk)

 [www.sharmanquinney.co.uk](http://www.sharmanquinney.co.uk)



 SCAN ME



Sharman Quinney Holdings Limited is registered in England and Wales under company number 4174227, Registered Office is Cumbria House, 16-20 Hockliffe Street, Leighton Buzzard, Bedfordshire, LU7 1GN. VAT Registration Number is 500 2481 05.

1: These particulars do not constitute part or all of an offer or contract. 2: The measurements indicated are supplied for guidance only and as such must be considered incorrect. 3: Potential buyers are advised to recheck the measurements before committing to any expense. 4: Sharman Quinney has not tested any apparatus, equipment, fixtures, fittings or services and it is the buyers interests to check the working condition of any appliances. 5: Sharman Quinney has not sought to verify the legal title of the property and buyers must obtain verification from their legal representative. 6: Intending purchasers will be asked to produce identification documentation at a later stage and we would ask your co-operation in order that there will be no delay in agreeing the sale. Ref: CSQ204232 - 0012

