



15 Leasowes Avenue, Coventry - CV3 6BH
Offers in Region of £325,000

15 Leasowes Avenue

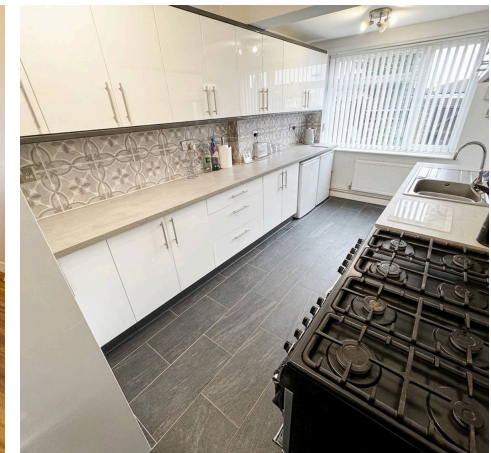
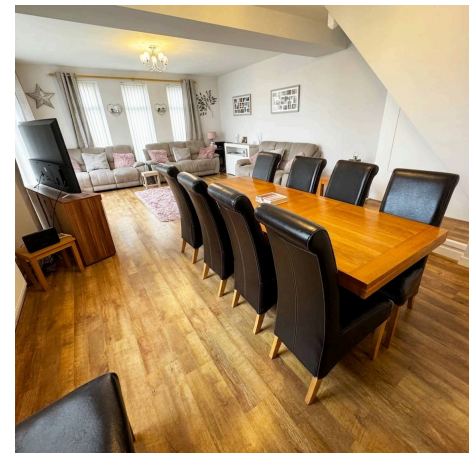
Coventry, Coventry

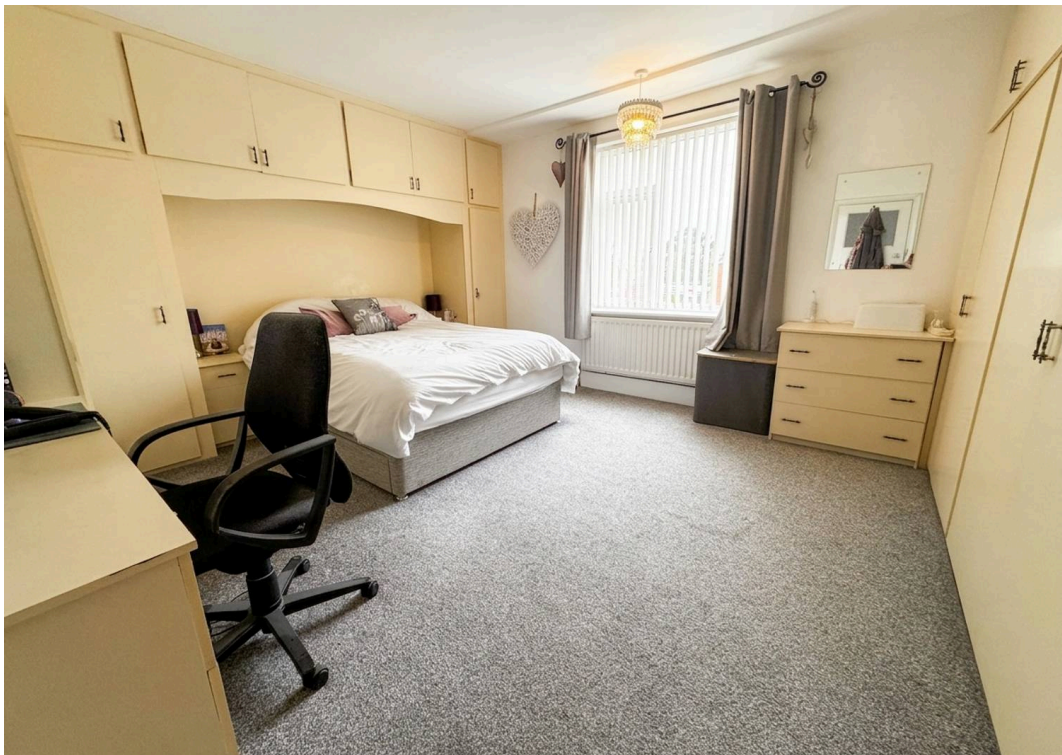
A MUST VIEW FAMILY HOME - Unique three bed home in Finham and Stivichall catchment. Corner plot, spacious lounge, modern kitchen, two bathrooms, gas central heating, double glazing, no chain. EPC C.

Council Tax band: C

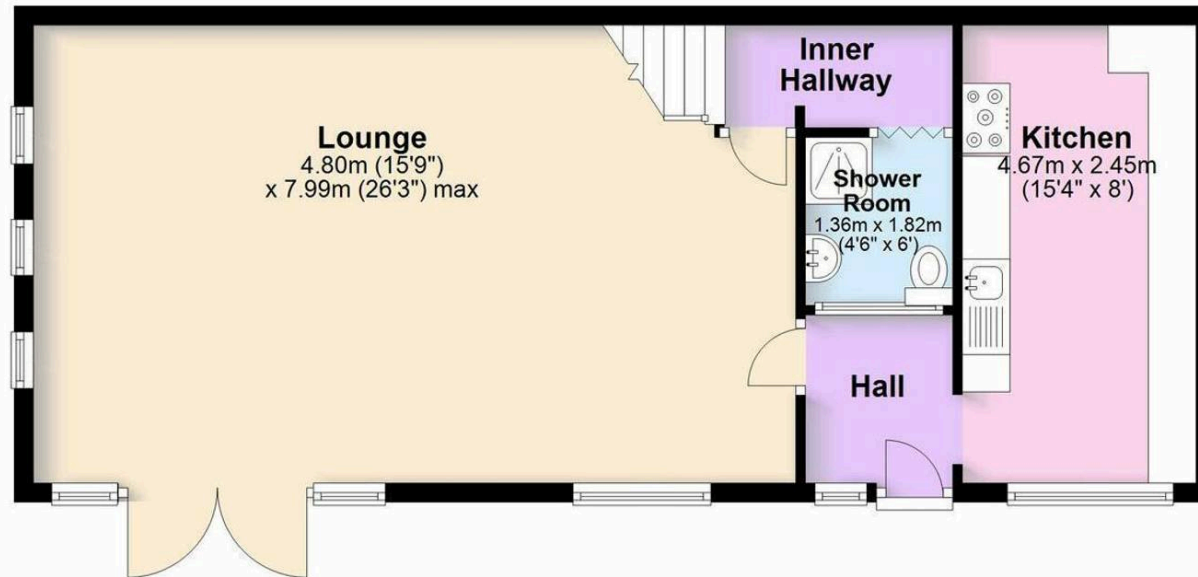
Tenure: Freehold

- **A Superb Family Home**
- **Finham & Stivichall Catchment Area**
- **A Former Bakery Situated On A Corner Plot**
- **Superb Lounge / Diner**
- **Fitted Modern Kitchen**
- **Ground Floor Shower Room / WC**
- **3 Generous Bedrooms**
- **Family Bathroom**
- **Gas Central Heating - Double Glazing**
- **No Chain - EPC C**

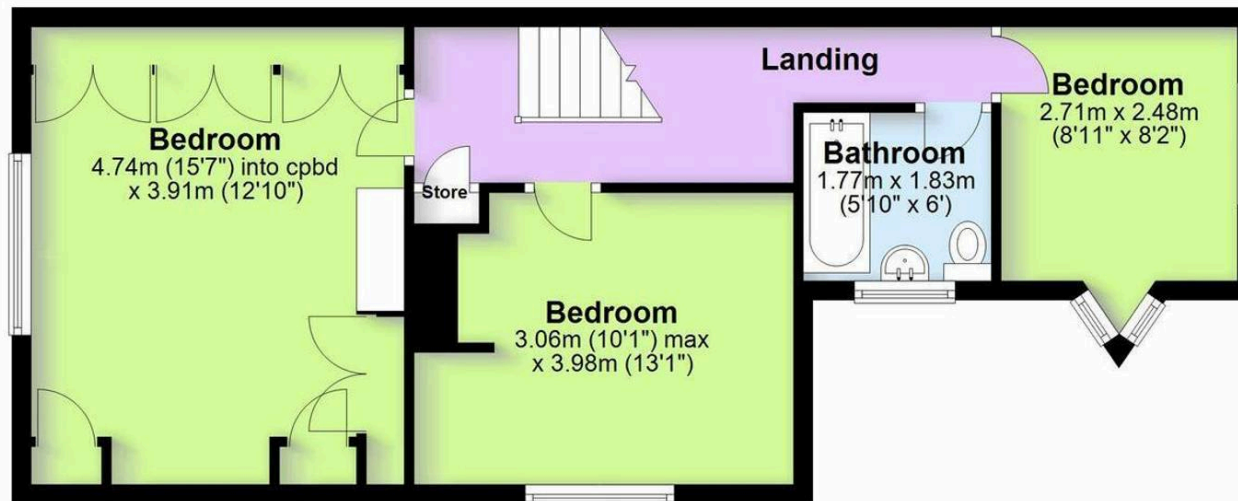




Ground Floor



First Floor



Total area: approx. 108.3 sq. metres (1166.0 sq. feet)

This floor plan is for illustrative purposes only and should be used as such by any prospective purchaser. Whilst every attempt has been made to ensure the accuracy of this plan, measurements of doors, windows, rooms and other items are approximate and no responsibility is taken for any error, omission or mis-statement.
Plan produced using PlanUp.