



52 The Copse | Hertford | SG13 7TX

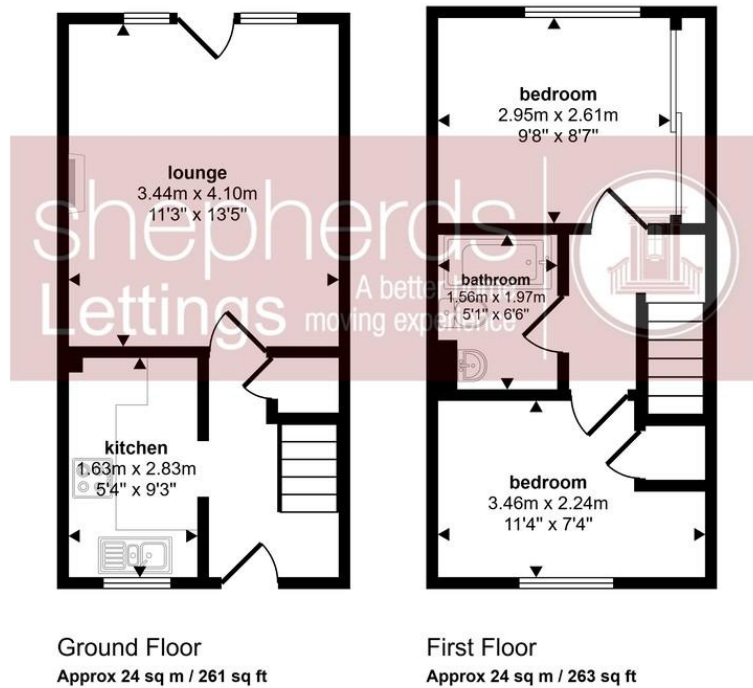
£1,400 pcm

A two bedroomed modern home situated in this popular development within a peaceful cul de sac location. Gas centrally heated and will allocated parking space and private rear garden. EPC rating C, Council Tax Band C. Deposit is equal to one month rent

- Two bedrooms
- Living Room
- Cul de sac location
- Private rear garden
- Allocated Parking



Approx Gross Internal Area
49 sq m / 524 sq ft



This floorplan is only for illustrative purposes and is not to scale. Measurements of rooms, doors, windows, and any items are approximate and no responsibility is taken for any error, omission or mis-statement. Icons of items such as bathroom suites are representations only and may not look like the real items. Made with Made Snappy 360.

Contact Details

6 Millbridge
Hertford
Hertfordshire
SG14 1PY

www.shepherdsfhertford.com
lettings@shepherdsfhertford.co.uk
01992 551955

Energy Efficiency Rating

Score	Energy rating	Current	Potential
92+	A		
81-91	B		91 B
69-80	C	76 C	
55-68	D		
39-54	E		
21-38	F		
1-20	G		

Agents Note: Whilst every care has been taken to prepare these sales particulars, they are for guidance purposes only. All measurements are approximate are for general guidance purposes only and whilst every care has been taken to ensure their accuracy, they should not be relied upon and potential buyers are advised to recheck the measurements