




**Campion Close, Blackwater, Camberley, GU17 9DU**

Offers Over £600,000

 4  2  3

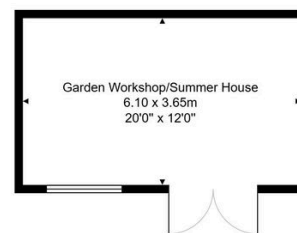
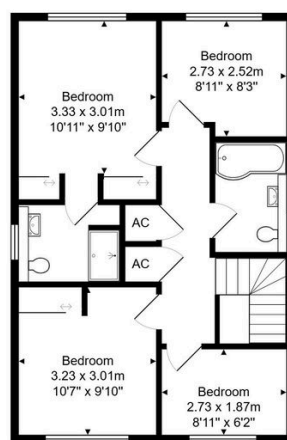
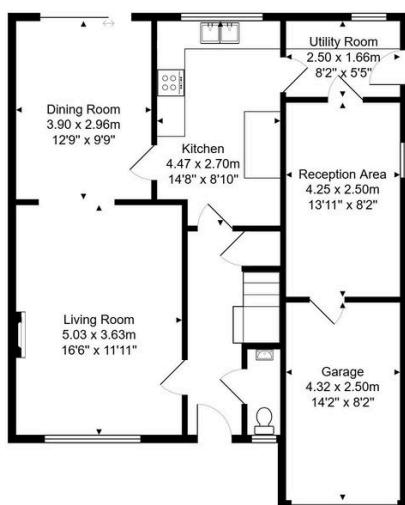


Located in a quiet cul-de-sac stands this deceptively spacious four bedroom detached family home offered for sale with no onward chain complications.

## Key Features

- Desirable Cul-de-sac Location
- Two Bathrooms
- Dining Room Overlooking The Rear Garden
- Reception Area
- Landscaped Garden With Workshop/ Summer House
- Four Bedrooms
- Large Living Room with Fireplace
- Kitchen With Separate Utility Room
- Garage & Driveway Parking
- No Onward Chain

10, Campion Close, Blackwater, Camberley, GU17 9DU



Total Area: 155.0 m<sup>2</sup> ... 1669 ft<sup>2</sup>  
 All measurements are approximate and for display purposes only